

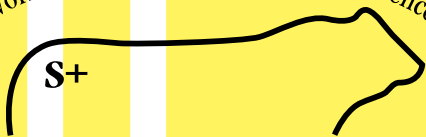
*Seedstock Plus South Missouri
Bull & Female Sale
March 23, 2024
12 noon
Joplin Regional Stockyards
Carthage, Missouri*

**ALL BULLS & REGISTERED FEMALES SELL WITH
GENOMIC-ENHANCED EPDS!
ALL ARE SIRE VERIFIED, COAT COLOR & POLLED TESTED!**



Bid & Buy at:
DVAuction

Working Together for Industry Excellence

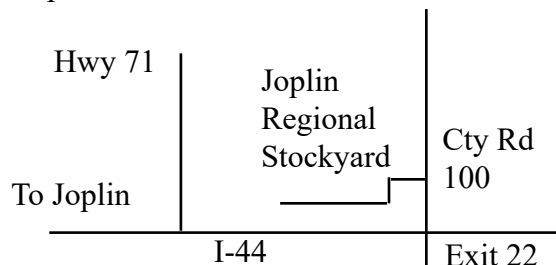


Seedstock Plus

Seedstock Plus South Missouri Bull & Female Sale

Saturday March 23, 2024 * 12 noon
Joplin Regional Stockyards, Carthage, MO

Map to Sale Site:



Directions to Sale Site:

Take Exit 22 (Cty Rd 100) off of I-44 and turn north - then take the frontage road to the Stockyards entrance.

Travel:

Commercial Air Service is available to Kansas City, MO which is 175 miles north. There are regional airports at both Springfield and Joplin. Call if you need transportation to or from an airport!

Accommodations:

Super 8 Motel, Carthage MO
417-359-9000

Quality Inn Hotel
Carthage, MO
417-359-5900

Days Inn, Carthage, MO
417-358-3900

After Sale Care:

We will be happy to care for your bull/s until you are ready for them. The buyer will be responsible for feed at cost until delivery.

Seedstock Plus Customer Service Programs

Guaranteed Sight-Unseen Purchases

Free Delivery on bulls
or \$100 Discount if picked up sale day

Bull Warranty Program

Bulls are guaranteed for Fertility, Structure and Disposition. For an additional 5% of purchase price, bull can be warrantied for injury and death for 6 months.

Marketing Assistance Program

- Feeder Calves
- Replacement Females
- Bred Heifers, Cows and Pairs

If you need additional information on a particular program, call us at the Seedstock Plus office.

Health

Seedstock Plus Bulls have been tested and found negative for PI BVD. We recommend producers purchase only bulls that are negative for Persistent Infected BVD Virus. **Bulls are also tested NEGATIVE for Trichomoniasis.** This is not mandated by the state of Missouri yet however, several surrounding states are requiring it and we felt it best to be on top of that. The bulls have been vaccinated and boosted with IBR, BVD, PI-3, BRSV-4, Blackleg & Vibrio Lepto. They have been on a regular de-worming schedule since weaning. All the bulls have passed a breeding soundness exam that includes live semen evaluation, palpation and scrotal measurement. All the necessary health tests have been performed and interstate health papers will be available sale day.

Seedstock Plus South Missouri Bull & Female Sale

March 23, 2024 * 12 noon

Joplin Regional Stockyards, Carthage, MO

John Burbank cell: 660-734-1165

Matt Burbank cell: 660-734-2739

Lanny Ford cell: 870-703-4345

Sale Day Office (Laurie): 660-734-2446

Jeremy Anstine, Kingsville Livestock Auctioneer..... 816-716-9288

Tucker Anstine, ring service.....816-345-0860

Doug Fager, ring service..... 913-645-9497

Selling: 145 - Balancer & Gelbvieh 18 Month Old & Yearling Bulls

12 Registered Open Heifers

26 - Commercial Spring Breds/ Pairs & 25 Open Heifers

About the Bulls:

- Prior to delivery to the test, bulls are sorted and culled at home
- Bulls are brought in to be fed together at a Regional Development Center
- Bulls are grown with their longevity in mind - fed for 3# ADG with high roughage ration
- Bulls are culled again prior to catalog for poor gain, conformation, disposition, etc.
- All bulls have passed a thorough breeding soundness exam prior to the sale
- All bulls are tested Negative for BVD -PI3 & Trichomoniasis
- All bulls have genomically enhanced EPDs and are SIRE VERIFIED.
- All Gelbvieh & Balancer bulls are Polled and Coat Color tested.
- The bulls are Guaranteed 'Free' of the currently known Genetic Defects we can test for.
- EPD's updated weekly so there will be updated EPDs, Tenderness scores, Ultrasound, frame scores & scrotal measurements will be available on a supplement sheet on sale day.



We are planning to video each of the bulls on March 11 - 12th - after they have been semen checked and clipped. The videos will be posted during that week and will be available to view by March 19th. If you would like to see a video of a specific bull and have access to high speed internet - you can go to our website OR www.dvauction.com and download the videos by the bull's LOT #.

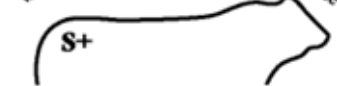
EPDs ARE CURRENT AS OF 2/6/2024

Internet Bidding:

The sale will be available to watch and bid real time at www.dvauction.com

1. Create an account under the 'create new account' tab.
2. Apply for bidding by clicking 'apply for bidding' in the upper left corner of the screen. **AT LEAST 24 HOURS PRIOR TO THE SALE!**
3. Tune in to the sale to make your purchases!

Working Together for Industry Excellence



Seedstock Plus

Seedstock Plus, LLC

John E. Burbank, CEO

18864 Kepler Dr.

St. Catharine, MO 64628

Toll Free: 877-486-1160 or

cell: 660-734-1165

email: john@seedstockplus.com

www.seedstockplus.com



Industry Commitment

The bulls included in this offering come from producers who are in the Seedstock business for the long haul. They raise the kind of bulls that produce the type of feeder calves that feed well and grade and yield on the rail. These are the kind of bulls that produce the replacement heifers that make our commercial customers so successful. Feel free to contact any of the members listed below if you have questions.

4 W Farms

Contact: Brycen Wiedmer
Troy, KS
816-262-4172

Hebron Ranch

Contact: Daniel Bell
Olaton, KY
270-274-1749

Nelson Ranch

Contact: Jerry Nelson
Soldier, KS
785-364-6183

Sandy Knoll Farm Gelbvieh

Contact: Brian L Dunn
St. John, KS
620-786-4039

Bryce Family Farms LLC

Contact: Bryce Cripps
Columbia, MO
573-808-4742

Horizon Farms

Contact: Ed Laverentz
Cheney, KS
316-990-5088

Norwood Gelbvieh

Contact: Jerry Norwood
Carthage, MO
417-850-1023

Simmons Cattle Company

Contact: Robert Simmons
Raymore, MO
816-266-6482

Burbank Cattle Company

Contact: Matt Burbank
St. Catharine, MO
660-734-2739

JGP Gelbvieh

Contact: Josh Phillips
Lathrop, MO
816-914-6053

Pecan Ridge Gelbvieh

Contact: Jaron Franks
Albertville, AL
256-426-3782

Springhaven Farm LLC

Contact: Ken Anderson
Belton, MO
816-506-7947

Burns Gelbvieh

Contact: Jesse Burns
Covington, OH
937-606-4861

KZ Cattle Company

Contact: Kerry Zillinger
Columbus, KS
785-543-7614

Pederson Gelbvieh

Contact: David Pederson
Buffalo, MN
320-333-2014

Stuecken Brothers

Contact: Derek Stuecken
Freeburg, MO
573-690-8543

Chapuis Cattle Company

Contact: Charlie Chapuis
Louisiana, MO
573-754-0079

Lawman Farms

Contact: Kathleen Merritt
Columbia, MO
419-439-3730

Reinert Family Farm

Contact: John Reinert
Billings, MO
417-224-7204

Wannabe Stock Farm

Contact: Gregory Summers
Smithville, MO
816-392-5242

Double V Farms

Contact: Vince Mariani
Warrensburg, MO
660-238-0335

Little Sioux Gelbvieh

Contact: Jack Welle
Milford, IA
712-251-4641

Rex Wood Farms

Contact: Rex Wood
Meadville, MO
660-247-2577

Ward Angus

Contact: Jeff Ward
Browning, MO
660-412-2590

Duck River Gelbvieh

Contact: David Bates
Duck River, TN
931-209-5053

Meng Farms Cattle Co.

Contact: Doug Meng
Troy, KS
913-370-0334

RM Cattle

Contact: Ryan Grable
Troy, KS
785-850-0686

Wolf Gelbvieh

Contact: Travis Wolf
Gothenburg, NE
308-529-3733

Flint Hills Gelbvieh

Contact: Ronald Schultz
Alma, KS
785-617-0033

Mulroy Farms LLC

Contact: Tim Mulroy
Mayetta, KS
785-640-6401

Rockin' U Ranch

Contact: Stan Utley
Richmond, MO
816-719-3793

Zimmerman Gelbvieh

Contact: Tyler Zimmerman
Harper, KS
620-243-2876

Gatson Gelbvieh

Contact: Adam Gatson
Vandalia, MO
573-721-6482

Narrow Gate Cattle

Contact: Larry Kendall
Osage Beach, MO
573-216-9719

Sanders Farm

Contact: Cody Sanders
Wellsville, KS
785-248-3202

About The Catalog:

Color possibilities:
Black - known red carrier
Homo Black - known homozygous black

Designates an RFI tested bull. This data is available on page 5 in the catalog.

Polled Status:
Polled: Single Polled
Scurred
Homo Polled

Balancer

COLOR

POLLED

540
RFI

EPD'S: All Bulls have an LD Profile and 'Genomic Enhanced EPDs'.

Breed Percentile Ranking: This number corresponds to the EPD directly above it to compare EPDs within breed.

PFX NAME

GRAND SIRE
SIRE
GRAND DAM
MAT GRAND SIRE
DAM
MAT GRAND DAM

REG #:	REG #:
BD:	B DATE
BW:	BW
WW:	Adj WW

Actual Data:
Registration #
Birthdate
Actual BW
Adjusted WW

CE	BW	WW	YW	MK	TM	CEM	ST	DOC	CW	REA	MB	\$C	FPI	EPI
BREED PERCENTILE RANKING PER EPD														
Breed %					OWNER:									

Breed Make-up on Balancer bulls. Abbreviations include: AN = Black Angus AR = Red Angus GV = Gelbvieh XX = unknown

Expected Progeny Differences 'EPD' Definitions

The American Gelbvieh Association transitioned to the BOLT system for EPD calculations in the fall of 2018. The American Angus Association had already been using this system for the previous year. There are 12 beef breed Associations in collaboration to form IGS (International Genetic Solutions) which brings a new, streamlined method for incorporating genomic results into the EPDs. This incorporates data and updates EPDs on a weekly basis. EPD Definitions:

CE: Calving Ease – A number that predicts the average difference in ease with which a sire's calves will be born when he is bred to first calf heifers – **higher numbers indicate greater calving-ease.**

BW: Birth Weight, **WW:** Weaning Weight & **YW:** Yearling Weight – All are expressed in pounds, this shows the expected number of pounds a bull or female will add or subtract from their progeny's birthweight, weaning weight and yearling weight respectively.

MK: Milk: expressed in pounds of weaning weight that a female will add/subtract or that a bull's daughters will have.

TM: Total Maternal - expresses the combination of what a sire transmits to his daughters in the form of genetics for growth and genetics for milking ability. Or that same trait directly applied to a female and expressed in pounds.

CEM: Calving Ease Maternal: this EPD predicts how well an animal's daughters will calve with a higher number being easier calving.

ST: Stayability: Predicts the genetic difference, in terms of percent probability, that a bull's daughters will stay productive within a herd to at least six year of age.

DOC: is expressed as a difference in yearling cattle temperament, with a higher value indicating more favorable docility. It predicts the average difference of progeny from a sire in comparison with another sire's calves. In herds where temperament problems are not an issue, this expected difference would not be realized.

CW: Carcass Weight: expressed in pounds of carcass weight adjusted to a constant fat endpoint.

REA: Rib Eye Area: expressed in square inches of rib eye muscle area adjusted to a constant fat endpoint.

MB: Marbling: expressed in degrees of marbling score, a determinant of USDA Quality Grade. Value is adjusted to a constant fat endpoint.

\$Cow: Represents the genetic value in dollars of profit of an animal when retained as a replacement female relative to other animals in the herd. A higher number represents more profitable genetics for maternal productivity.

FPI: An economic selection index designed to aid producers in selecting sires whose progeny will perform in the feedlot and are sold on grade and yield.

EPI: An economic selection index developed to aid producers in selecting for more feed efficient cattle that still have acceptable amounts of gain.

NOTE: All of the definitions for the Angus EPD Indexes are in the box at the start of the Angus bulls pages with the breed average EPDs.

What you need to know about Residual Feed Intake (RFI)....

What is Residual Feed Intake or RFI? Residual Feed Intake or RFI is defined as the difference between an animal's actual feed intake and its expected feed requirements for maintenance and growth. RFI is the variation in feed intake that remains after the requirements for maintenance and growth have been met. Efficient animals eat less than expected and have a negative or low RFI, while less efficient animals eat more than expected and have a positive or high RFI.

How is RFI measured? To accurately measure RFI, you have to weigh and log an individual animal's feed consumption and compare that amount to the animal's expected intake over a standardized test period. The technology to do this accurately is available utilizing the GrowSafe feed system. The system has individual bunks that sit on weigh bars that are configured for only one animal to eat at a time. Feed is available free choice and every animal on test has an EID tag. When an animal's head enters the bunk, it passes a sensor that records that individual EID number and measures the amount of feed consumed by that individual. The sensors and weigh bars are taking second by second readings. This feed intake data is instantly transmitted wirelessly to a dedicated computer and stored in its database. All this data and individual animal information and weights are sent to GrowSafe Systems at for analysis and to compute an RFI score.

How is RFI reported? RFI is reported in numerical form plus or minus in pounds of feed. Each group is forced to have an average of zero. The RFI results can range from a minus 3.5 to a plus 3.5. Using this range there can be a difference of 7 pounds of feed consumed per day to achieve a comparable gain.

How important is RFI data? The economic relevance of RFI is significant. RFI is moderately heritable at .28-.44 comparable with other production traits. By selecting for feed efficiency various research documents an increase in carrying capacity of 10% or more and increased feedlot profitability of 10-15%. Imagine reducing feed costs by over 10% or running 10% more cattle on the same resources. However, selecting for RFI must be done as part of a balanced selection program as other traits such as disposition, calving ease, fertility, growth, milk and carcass also have significant economic relevance. Each producer or rancher must analyze their individual situations to determine what traits will be most beneficial to their bottom line.

How does Seedstock Plus factor in? Seedstock Plus has been RFI testing bulls since 2010. We embraced the importance of this data for our use as breeders and also to enhance the selection available to our customers. In the summer of 2013 we purchased and installed our own GrowSafe systems. In the fall of 2015, we expanded the system and in the spring of 2022, we refurbished the bunks and updated the electronics. Accelerating the amount of data generated to incorporate with all the other data Seedstock Plus has been collecting such as DNA and ultrasound.

Reading the RFI test results.

Group: Denotes which group the bull was tested in. The RFI score of bulls from one group should not be compared to other groups as they are separate contemporary groups.

ADG: The average daily gain during the RFI test

ADG Ratio: Ratio with 100 being average, calculated per group for comparison.

RFI: the RFI value calculated from the bull's actual feed intake on test

RFI RANK: The RFI rank within each group with 1 being best.



RFI Rank is within each group

RFI DATA ON SALE BULLS

RFI Rank is within each group

LOT #	Group	ADG	RATIO	RFI	RANK	LOT #	Group	ADG	RATIO	RFI	RANK
351	1	4.93	109	0.37	3	445	3	4.29	112	-1.85	12
352	1	4.43	98	-1.26	1	447	3	3.57	93	1.41	45
364	3	3.50	91	-2.27	10	448	3	5.29	138	-1.34	16
378	1	4.71	104	-0.37	2	449	3	5.14	134	1.70	49
379	2	4.14	96	-1.81	14	450	3	4.00	104	2.93	58
385	1	4.43	98	1.23	4	451	3	4.07	106	1.26	44
396	2	3.43	80	-0.13	22	452	3	3.79	99	1.52	46
401	2	4.64	108	2.62	41	453	3	4.14	108	0.75	39
402	2	4.14	96	-0.82	17	454	3	4.36	114	-3.55	5
403	2	5.07	118	1.92	38	455	3	4.07	106	1.59	47
405	2	5.00	116	1.79	37	457	3	4.93	128	-0.24	31
407	2	5.07	118	0.22	28	458	3	4.29	112	1.21	43
408	2	4.71	110	-2.03	13	459	3	3.86	101	-3.68	3
409	2	4.86	113	-2.14	11	462	2	4.21	98	8.05	46
410	2	5.00	116	-2.80	7	464	2	4.86	113	-0.49	19
413	2	5.36	125	3.92	43	466	2	3.36	78	4.83	45
415	2	4.07	95	4.45	44	467	2	3.43	80	-3.26	6
416	2	4.64	108	0.35	29	468	2	5.50	128	0.55	30
417	2	4.29	100	1.37	33	469	2	4.29	100	-1.08	16
419	2	4.14	96	1.50	34	470	3	4.43	115	3.57	60
421	2	4.71	110	-1.74	15	471	3	3.00	78	-1.26	17
422	2	3.57	83	-0.09	24	472	3	3.79	99	-0.88	21
424	2	4.57	106	2.36	39	473	3	3.71	97	-1.76	13
425	2	4.00	93	-2.29	9	474	3	3.43	89	-1.12	18
429	2	4.50	105	-0.18	20	476	3	4.36	114	0.49	37
430	2	5.00	116	-3.79	2	478	3	3.07	80	-1.08	19
431	2	4.36	101	-2.14	12	479	3	4.50	117	-0.37	26
434	2	3.71	86	2.43	40	481	3	2.57	67	2.54	54
435	2	4.50	105	-2.49	8	482	3	4.00	104	0.46	36
437	2	5.00	116	-0.07	26	483	3	4.00	104	-2.91	6
438	3	4.00	104	1.65	48	484	3	4.07	106	0.07	33
439	3	3.93	102	-2.67	7	486	3	3.50	91	-4.56	2
440	3	4.50	117	0.88	41	487	3	3.57	93	-1.04	20
441	3	4.64	121	5.03	61	488	3	4.36	114	1.72	50
442	3	3.57	93	0.97	42	490	3	3.86	101	-0.26	30
443	3	3.50	91	-0.71	24	491	3	3.64	95	-5.78	1
444	3	3.64	95	0.37	35						

PLEASE NOTE! Depending on the timing of the data compilation at IGS - this RFI data may or may not be included in the EPDs! Use the actual data if this is a trait you are utilizing - the EPDs will correct eventually.

Bull Warranty Program Insurance for your bull!

Several years ago, Seedstock Plus instituted an insurance program for new bull purchases in an effort to protect our customers from a catastrophic loss if something should happen to a bull within the first breeding season. This program covers any and all possible things that a bull can do to himself in the first six months of ownership. The warranty costs **5%** of the purchase price and should you have to use it, we try to either bring you a comparable replacement or find a suitable loaner bull to get the cows bred if you are still in the midst of breeding season. If something happens to him towards the end of the season, we still cover that but often will either take the bull back and issue a credit towards your next purchase or have you ship the bull, keep the salvage funds and issue a credit for the balance. Any way you look at it - we get you back even! We've warranted bulls that have been hit by lightning, hit by trains, drowned, broken various body parts or been injured in such a way that he won't ever be sound to breed cows again.

There are very few affordable commercial insurance policies that will cover a bull for loss of use. Farm policies will cover 'acts of God' (so do we!) but again, an injury is just your tough luck. The **5%** of purchase price cost is a small price if something happens to your bull within that first 6 months!

We appreciate the fact that you've put your trust in us to present you with a bull that has a good disposition, good feet and legs and will breed cows - we feel those things should be 'on us' and you don't need insurance if you have a problem in one of these areas - you just need to let us know and we'll take care of it. We try to catch every possible problem prior to the sale but things happen and bulls are bulls.... But if your bull gets injured or dies, he needs to be insured! Take a good look at what the warranty can offer you and be sure to tell us at the settlement table that you want to insure your bull!

About Angus Bulls

All of the Angus bulls in this category are registered with the American Angus Association and their EPD's are the most current provided by their Association. Remember that the Angus EPD's can only be compared within breed and to the breed average.

The average EPD's for Angus bulls as of 2/13/2024:

CE: 6 BW: 1.2 WW: 63 YW: 112 MK: 27 CEM: 9 DOC: 18 CW: 50
REA: .65 MB: .69 \$W:59 \$F: 88 \$G: 53 \$B: 144 \$C: 250

Angus Index EPD Definitions:

\$W: (Weaned Calf Value) is an index value expressed in dollars per head and is the expected average difference in future progeny performance for preweaning merit. \$W includes both revenue and cost adjustments associated with differences in birth weight, weaning direct growth, maternal milk and mature cow size

\$F: (Feedlot Value) & **\$G** (Grid Value) (are both an index value expressed in dollars per head, and are the expected average difference in future progeny performance for postweaning merit (\$F) and progeny performance for carcass grid (\$G) compared to progeny of other sires

\$B: (Beef Value) is an index value expressed in dollars per head and is the expected average difference in future progeny performance for postweaning and carcass value compared to progeny of other sires

\$C: (Combined Value) is an index expressed in dollars per head. The EPDs directly influencing this combined index: calving ease direct (CE) and maternal (CEM), weaning weight (WW), yearling weight (YW), maternal milk (MK), heifer pregnancy (HP), docility (DOC), mature cow weight (MW), foot angle (Angle), claw set (Claw), dry matter intake (DMI), marbling (MB), carcass weight (CW), ribeye area (RE) and fat thickness (Fat) Utilize this index with the objective that producers will replace 20% of their breeding females per year with replacement heifers retained within their own herd. The remaining cull heifer and steer progeny are then assumed to be sent to the feedlot where the producers retain ownership of those cattle and sell them on a quality-based carcass merit grid

Angus

Springhaven Mason 2610

SPRINGHAVEN PROGRESS 6083
SPRINGHAVEN MASON 9164
SPRINGHAVEN EVINCE HD 4164

SYDGEN BLACK PEARL 2006
SPRINGHAVEN BLACK PEARL 6610
SPRINGHAVEN-CONFIDENCE-3510

REG #:	20787766
BD:	6/10/2022
BW:	75
WW:	533

CE	BW	WW	YW	MK	CEM	DOC	CW	REA	MB	\$W	\$F	\$G	\$B	\$C
5	3.7	53	97	20	11	13	31	.57	.00	40	81	22	103	203
BREED PERCENTILE RANKING PER EPD														
60	95	80	80	90	25	75	90	65	95	95	65	95	95	90
Breed %		100AN			OWNER:					Springhaven Farm LLC				

Angus

Springhaven Playbook 2165

TEX PLAYBOOK 5437
VALLEY OAKS PLAYBOOK 9089
KR BLANCHE 7276

SPRINGHAVEN NEWSMAKER
SPRINGHAVEN NEWSMAKER 2165
SPRINGHAVEN WED BELLE 4065

REG #:	20787765
BD:	6/25/2022
BW:	70
WW:	646

CE	BW	WW	YW	MK	CEM	DOC	CW	REA	MB	\$W	\$F	\$G	\$B	\$C
3	3.6	45	84	36	9	23	35	.55	.60	49	89	50	139	270
BREED PERCENTILE RANKING PER EPD														
75	95	95	90	5	45	30	85	65	60	80	50	55	55	30
Breed %		100AN			OWNER:					Springhaven Farm LLC				

347

348

ANGUS BULLS

Angus

Springhaven Mason 2170

349

Angus

Springhaven Progress 2815

353

SPRINGHAVEN PROGRESS 6083
SPRINGHAVEN MASON 9164
SPRINGHAVEN EVINCE HD 4164

REG #:	20787771
BD:	6/30/2022
BW:	75
WW:	665

SPRINGHAVEN BIRTHSTONE 3026
SPRINGHAVEN-BS-5170
SPRINGHAVEN CHARM 2170

RITO 3S10 OF 9Q15 PROGRESS
SPRINGHAVEN PROGRESS 6083
SPRINGHAVEN IMPRESSION 3083

REG #:	20787772
BD:	8/20/2022
BW:	66
WW:	609

W C C SPECIAL DESIGN L309
SPRINGHAVEN CORRELIA 5815
SPRINGHAVEN CORRELIA 5015

CE	BW	WW	YW	MK	CEM	DOC	CW	REA	MB	\$W	\$F	\$G	\$B	\$C
4	1.5	47	88	32	10	15	16	.28	.61	52	59	49	108	203
BREED PERCENTILE RANKING PER EPD														
70	60	90	90	15	35	70	95	95	60	55	75	55	90	90
Breed %	100AN				OWNER:	Springhaven Farm LLC								

CE	BW	WW	YW	MK	CEM	DOC	CW	REA	MB	\$W	\$F	\$G	\$B	\$C
16	-2.7	39	79	36	13	6	27	.80	1.28	52	79	87	166	261
BREED PERCENTILE RANKING PER EPD														
2	2	95	95	5	10	95	95	30	10	75	70	10	25	40
Breed %	100AN				OWNER:	Springhaven Farm LLC								

Angus

Springhaven Highlight 2141

350

Angus

FHCC LAW Empower 2413

354

SPRINGHAVEN PROGRESS 6083
SPRINGHAVEN HIGHLITE 9916
SPRINGHAVEN ANNIE BN 5016

REG #:	20787764
BD:	8/1/2022
BW:	72
WW:	581

SPRINGHAVEN-TOTAL-0020
SPRINGHAVEN-DIXIE-MAE 3141 T
SPRINGHAVEN DIXIE MAE 0141

SYDGEN ENHANCE
FHCC EMPOWER 8565
CIRCLE A BANDO 0365

REG #:	20839862
BD:	8/31/2022
BW:	70
WW:	662

ELLINGSON CHAPS 4095
FHCC GEORGIA 0412
FHCC GEORGIA 2503

CE	BW	WW	YW	MK	CEM	DOC	CW	REA	MB	\$W	\$F	\$G	\$B	\$C
-3	3.5	57	96	26	7	13	49	.78	.41	52	96	43	139	239
BREED PERCENTILE RANKING PER EPD														
95	95	70	80	55	65	75	55	30	80	75	35	70	55	65
Breed %	100AN				OWNER:	Springhaven Farm LLC								

CE	BW	WW	YW	MK	CEM	DOC	CW	REA	MB	\$W	\$F	\$G	\$B	\$C
0	2.3	64	116	34	6	4	45	.69	1.03	63	88	73	161	256
BREED PERCENTILE RANKING PER EPD														
90	75	50	45	10	75	95	65	45	20	40	50	15	30	45
Breed %	100AN				OWNER:	Lawman Farms								

Angus

Springhaven Progress 2501

351

Angus

FHCC LAW Empower 2417

355

RITO 3S10 OF 9Q15 PROGRESS
SPRINGHAVEN PROGRESS 6083
SPRINGHAVEN IMPRESSION 3083

REG #:	20787768
BD:	8/1/2022
BW:	70
WW:	544

CONNEALY CAPITALIST 028
SPRINGHAVEN DONNA C 5001
SPRINGHAVEN-DONNA-0001

SYDGEN ENHANCE
FHCC EMPOWER 8565
CIRCLE A BANDO 0365

REG #:	20839864
BD:	9/6/2022
BW:	75
WW:	722

SITZ STELLAR 726D
FHCC EVERGREEN 0404
FHCC EVERGREEN 6525

CE	BW	WW	YW	MK	CEM	DOC	CW	REA	MB	\$W	\$F	\$G	\$B	\$C
13	0.2	46	87	35	13	18	27	.51	1.07	55	72	67	139	249
BREED PERCENTILE RANKING PER EPD														
10	30	95	90	10	10	55	95	70	15	65	85	25	55	50
Breed %	100AN				OWNER:	Springhaven Farm LLC								

CE	BW	WW	YW	MK	CEM	DOC	CW	REA	MB	\$W	\$F	\$G	\$B	\$C
-3	3.9	70	135	32	2	18	54	.82	.97	57	94	75	169	272
BREED PERCENTILE RANKING PER EPD														
95	95	30	15	15	95	55	40	25	25	60	40	15	20	30
Breed %	100AN				OWNER:	Lawman Farms								

Angus

Springhaven Progress 2125

352

Angus

Ward Convoy 287

356

RITO 3S10 OF 9Q15 PROGRESS
SPRINGHAVEN PROGRESS 6083
SPRINGHAVEN IMPRESSION 3083

REG #:	20787769
BD:	8/3/2022
BW:	70
WW:	616

SPRINGHAVEN HERO 6073
SPRINGHAVEN-CORRELIA 0125
SPRINGHAVEN CORRELIA 5815

CONNEALY CONCORD
CONNEALY CONVOY
EBBIE OF CONANGA 5473

REG #:	20823963
BD:	9/14/2022
BW:	73
WW:	588

LIMESTONE MARATHON U250
BUFORD EMMA 707Y
SITZ EMMA E 120P

CE	BW	WW	YW	MK	CEM	DOC	CW	REA	MB	\$W	\$F	\$G	\$B	\$C
14	-0.7	55	104	31	14	27	46	.53	.42	56	96	39	135	232
BREED PERCENTILE RANKING PER EPD														
4	15	75	65	20	10	15	60	70	80	60	35	75	65	70
Breed %	100AN				OWNER:	Springhaven Farm LLC								

CE	BW	WW	YW	MK	CEM	DOC	CW	REA	MB	\$W	\$F	\$G	\$B	\$C
12	0.0	59	108	23	13	28	35	.80	.63	58	81	54	135	248
BREED PERCENTILE RANKING PER EPD														
10	25	65	60	75	10	10	85	30	55	55	65	45	65	55
Breed %	100AN				OWNER:	Ward Farms								

ANGUS BULLS

Angus

Ward Pendleton 262

WB PENDLETON 708 PVF SWSN
WARD PENDLETON 025
JM LADY RT ANSWER J109-J301

WARD INSIGHT 510
WARD ESBON 033
WARD ESBON 257

REG #:	20825811
BD:	10/1/2022
BW:	75
WW:	556

CE	BW	WW	YW	MK	CEM	DOC	CW	REA	MB	\$W	\$F	\$G	\$B	\$C
10	0.7	53	89	25	8	22	25	.31	.32	62	68	28	96	214
BREED PERCENTILE RANKING PER EPD														
20	40	80	85	60	55	35	95	95	85	45	90	95	95	85
Breed %	100AN				OWNER:	Ward Farms								

357

Angus

Ward Pendleton 258

WB PENDLETON 708 PVF SWSN
WARD PENDLETON 025
JM LADY RT ANSWER J109-J301

J D PAY DIRT 546
WARD BLACKCAP 030
WARD BLACKCAP 177

REG #:	20823947
BD:	11/5/2022
BW:	70
WW:	830

CE	BW	WW	YW	MK	CEM	DOC	CW	REA	MB	\$W	\$F	\$G	\$B	\$C
9	-0.7	58	97	29	16	22	44	.24	.44	63	78	32	109	214
BREED PERCENTILE RANKING PER EPD														
30	15	70	80	30	2	35	65	95	75	40	75	90	90	85
Breed %	100AN				OWNER:	Ward Farms								

361

Angus

Ward Pendleton 275

WB PENDLETON 708 PVF SWSN
WARD PENDLETON 025
JM LADY RT ANSWER J109-J301

BC LOYAL C1951
WARD EILEENMERE 9033
JM LADY 1014 TOTAL M836-J353

REG #:	20823964
BD:	10/20/2022
BW:	76
WW:	576

CE	BW	WW	YW	MK	CEM	DOC	CW	REA	MB	\$W	\$F	\$G	\$B	\$C
12	-1.1	50	89	35	7	24	34	.44	.23	65	73	29	102	214
BREED PERCENTILE RANKING PER EPD														
10	10	85	85	10	65	85	80	95	35	85	90	95	95	85
Breed %	100AN				OWNER:	Ward Farms								

358

Angus

Ward Playbook 292

TEX PLAYBOOK 5437
SAMPSON CD PLAYBOOK 1946
CONLEY EISA ERICA 4460

WCC KLR GRAND TORINO 95
WALLACE LADY BELLE 2108
S C I LADY BELLE 0X7-387

REG #:	20823961
BD:	11/18/2022
BW:	70
WW:	586

CE	BW	WW	YW	MK	CEM	DOC	CW	REA	MB	\$W	\$F	\$G	\$B	\$C
-1	3.3	67	113	27	7	23	44	.48	.15	59	82	26	107	210
BREED PERCENTILE RANKING PER EPD														
95	90	40	50	45	65	30	65	75	95	55	65	95	90	85
Breed %	100AN				OWNER:	Ward Farms								

362

Angus

Ward Playbook 290

TEX PLAYBOOK 5437
SAMPSON CD PLAYBOOK 1946
CONLEY EISA ERICA 4460

BC LOYAL C1951
WARD LASS 9037
WARD LASS 630

REG #:	20823951
BD:	11/2/2022
BW:	74
WW:	608

CE	BW	WW	YW	MK	CEM	DOC	CW	REA	MB	\$W	\$F	\$G	\$B	\$C
13	0.4	55	95	31	14	21	35	.37	.49	66	85	38	123	241
BREED PERCENTILE RANKING PER EPD														
10	35	75	80	20	10	40	85	90	70	30	55	80	80	60
Breed %	100AN				OWNER:	Ward Farms								

359

Angus

Ward Pendleton 271

WB PENDLETON 708 PVF SWSN
WARD PENDLETON 025
JM LADY RT ANSWER J109-J301

LD CAPITALIST 316
WARD ERICA 9010
WARD ERICA 367

REG #:	20823957
BD:	11/21/2022
BW:	72
WW:	768

CE	BW	WW	YW	MK	CEM	DOC	CW	REA	MB	\$W	\$F	\$G	\$B	\$C
10	-0.1	46	80	36	10	16	21	.29	.38	60	58	33	91	201
BREED PERCENTILE RANKING PER EPD														
20	25	95	95	5	35	65	95	95	80	50	95	85	95	90
Breed %	100AN				OWNER:	Ward Farms								

363

Angus

Ward Playbook 259

TEX PLAYBOOK 5437
SAMPSON CD PLAYBOOK 1946
CONLEY EISA ERICA 4460

PVF INSIGHT 0129
WARD LASS 630
WCC LASS 864

REG #:	20823955
BD:	11/3/2022
BW:	75
WW:	636

CE	BW	WW	YW	MK	CEM	DOC	CW	REA	MB	\$W	\$F	\$G	\$B	\$C
6	0.8	56	95	28	7	28	39	.78	.17	62	81	31	112	228
BREED PERCENTILE RANKING PER EPD														
55	40	75	80	40	65	10	75	30	95	45	65	90	90	75
Breed %	100AN				OWNER:	Ward Farms								

360

Angus

SKF Dunn's Allied Security 063L

G A R SURE FIRE
G A R HIGH SECURITY JSF 4005
G A R HIGH DESIGN 781

SCHIEFELBEIN ALLIED 514
DUNNS MISS ALLIED 655D
DUNNS MS CORTACHY FOCUS 203Z

REG #:	20796258
BD:	2/4/2023
BW:	74
WW:	721

CE	BW	WW	YW	MK	CEM	DOC	CW	REA	MB	\$W	\$F	\$G	\$B	\$C
13	-1.2	66	115	33	6	29	35	.66	.95	78	73	68	141	272
BREED PERCENTILE RANKING PER EPD														
10	10	45	45	15	75	10	85	50	25	10	85	20	55	30
Breed %	100AN				OWNER:	Sandy Knoll Farm								

364

About Balancer® Bulls

The Profitable Blend of Angus and Gelbvieh Genetics!

Balancer hybrids offer a simple and powerful way to maintain hybrid vigor and the proper blend of British and Continental genetics in your cowherd without complicated crossbreeding systems. Registered Balancer hybrids combine the Angus advantages of calving ease, moderate mature size, marbling and convenience traits with Gelbvieh growth, muscle leanness, fertility and unequaled pounds of calf per cow exposed in a single animal. And, documented research proves that Balancer hybrids offer the same consistency as their purebred parents with improved uniformity of composition. Plus, Balancers are registered seedstock, complete with documented parentage and EPD's. Balancer bulls are registered as Gelbvieh and Angus or Red Angus hybrids with a minimum of 75% of the pedigree documented and with both the sire and the dam recorded with their respective association. There are also registered Hybrid bulls in this category, the difference being a varying percentage of Gelbvieh as well as a mixture of other breeds. These bulls can be used in a similar way as the Balancer bulls as long as the buyer is aware of the actual breed makeup as close as can be known.

Both the Balancer & Hybrid bulls' EPD's are figured on the Gelbvieh base and can be compared to the Gelbvieh bulls. The average EPD's for Balancer bulls as of 2/6/2024 are:

CE: 13 BW: -0.5 WW: 72 YW: 112 Milk: 23 TM: 59 CEM: 7 ST: 15
DOC: 12 CW: 36 REA: .52 MB: .36 \$C: 106.88 FPI: 81.88 EPI: 113.44

Balancer Homo Black Homo Polled

367

RGCC Powercat 2101K

STEVENSON ROCKMOUNT RX933
DMI 72E
DMI 58C

DCSF POST ROCK HIGHLY FOCUSED
RGCC LADY CAT 611D
RGCC LADY CAT 420B

REG #:	1549781
BD:	9/3/2022
BW:	74
WW:	531

CE	BW	WW	YW	MK	TM	CEM	ST	DOC	CW	REA	MB	\$C	FPI	EPI	
17	-2.6	57	86	24	53	9	17	11	32	.41	.54	112.16	80.49	103.91	
BREED PERCENTILE RANKING PER EPD															
10	15	95	95	40	85	15	20	70	65	75	15	40	60	60	
Breed %		41GV 59AN			OWNER:					RM Cattle					

Balancer Homo Black Homo Polled

368

TMGC SB Ditka 159K

JJNR MR DITKA 26F
TMMW MR DITKA 22H
TMMW KRUGERS MISS RUBY 56Z

S A V RESOURCE 1441
SB PRIDE OF RESOURCE 8008E
CIRCLE A PRIDE 4212

REG #:	1564389
BD:	9/7/2022
BW:	80
WW:	566

CE	BW	WW	YW	MK	TM	CEM	ST	DOC	CW	REA	MB	\$C	FPI	EPI	
10	0.1	77	126	24	62	3	13	12	38	48	.32		82.75		
BREED PERCENTILE RANKING PER EPD															
90	65	30	20	40	35	>95	75	50	45	60	60		45		
Breed %		26GV 74AN			OWNER:					Stuecken Bros					

Balancer Homo Black Homo Polled

365

WNBE 233K

CCRO CAROLINA LEVERAGE 3214A
DCH HILLE STOCK OPTIONS D410
DCH HILLE B189 ET

MCC DAYBREAK
WNBE 931G
JEB ZINIA 400Z ET

REG #:	1562014
BD:	8/27/2022
BW:	80
WW:	646

CE	BW	WW	YW	MK	TM	CEM	ST	DOC	CW	REA	MB	\$C	FPI	EPI	
15	0.4	84	133	25	67	8	18	9	48	1.38	.44	137.63	92.25	155.31	
BREED PERCENTILE RANKING PER EPD															
25	70	10	10	30	15	30	10	95	15	1	30	4	10	15	
Breed %		75GV 25AN			OWNER:					Wannabe Stock Farm					

Balancer Homo Black Homo Polled

369

TMGC SB Papparazzi 104K

V A R DISCOVERY 2240
JKGF CIVIL WAR E92
JKGF LOTTIE C92

BTBR SAGUARO 8111F ET
TMGC SB VERBENA 132H
TMGC SB ARIAL 117D

REG #:	1564381
BD:	9/8/2022
BW:	79
WW:	571

CE	BW	WW	YW	MK	TM	CEM	ST	DOC	CW	REA	MB	\$C	FPI	EPI	
13	0.0	86	136	16	59	9	16	9	44	.69	.45	115.90	91.51	193.84	
BREED PERCENTILE RANKING PER EPD															
50	60	10	10	95	50	15	30	95	25	20	30	30	10	3	
Breed %		56GV 44AN			OWNER:					Stuecken Bros					

Balancer Homo Black Homo Polled

366

TMGC SB Barcelona 99K

CCRO CAROLINA LEVERAGE 3214A
TMGC SB FORMULA 12E
TMGC SB DANIELLE 07C

DL DUALY
TMGC SB LADY DUALY 200F
CIRCLE A BLACKCAP 127E

REG #:	1564375
BD:	8/27/2022
BW:	80
WW:	546

CE	BW	WW	YW	MK	TM	CEM	ST	DOC	CW	REA	MB	\$C	FPI	EPI	
12	1.8	91	146	20	66	8	12	14	54	.84	.64	97.49	97.02	207.28	
BREED PERCENTILE RANKING PER EPD															
65	90	2	3	75	15	30	85	10	10	5	10	75	3	2	
Breed %		39GV 61AN			OWNER:					Stuecken Bros					

Genomic-Enhanced EPDs

All of the bulls in the Seedstock Plus Program are DNA tested to be able to provide the most accurate, DNA -Enhanced EPDs as part of our commitment to bring you the best data so you can make the most informed decision and get the best bull for your program. Let us know if you need any help understanding any of the data.

BALANCER BULLS

Balancer Black Homo Polled **370**
RDW 28K

VRT LAZY TV TANK X315
 NORG COMBAT READY D54
 NORG QUEEN A54

MTB BCC PEDRO 6A
 RDW 736G
 RDW 175B

REG #:	1575692
BD:	9/8/2022
BW:	70
WW:	605

CE	BW	WW	YW	MK	TM	CEM	ST	DOC	CW	REA	MB	\$C	FPI	EPI
15	-2.7	63	98	26	58	10	14	11	47	.36	.53	93.89	83.31	108.58
BREED PERCENTILE RANKING PER EPD														
25	15	85	80	25	60	10	60	70	20	80	15	80	40	55
Breed %		50GV 50AN			OWNER:		Rex Wood Farms							

Balancer Homo Black Homo Polled **373**
TMGC SB Barcelona 183K

CCRO CAROLINA LEVERAGE 3214A
 TMGC SB FORMULA 12E
 TMGC SB DANIELLE 07C

DL DUALLY
 TMGC SB DELISH 201F
 TMGC SB MADONNA 120A

REG #:	1564412
BD:	9/12/2022
BW:	81
WW:	530

CE	BW	WW	YW	MK	TM	CEM	ST	DOC	CW	REA	MB	\$C	FPI	EPI
14	-2.8	79	125	21	61	10	15	14	47	.67	.67	113.31	96.63	181.59
BREED PERCENTILE RANKING PER EPD														
35	10	20	20	70	40	10	45	10	20	20	4	35	3	4
Breed %		50GV 50AN			OWNER:		Stuecken Bros							

Balancer Homo Black Homo Polled **371**
RDW 25K WTL

MTB BCC PEDRO 6A
 DJZ SYMMETRY 55D
 JEB BCC MISS BALANCE 54A

WNBE 549C
 RDW 710G WTL
 RDW 407D

REG #:	1575690
BD:	9/9/2022
BW:	80
WW:	535

CE	BW	WW	YW	MK	TM	CEM	ST	DOC	CW	REA	MB	\$C	FPI	EPI
9	2.0	72	115	20	56	5	13	10	47	.79	.53	92.39	82.58	130.55
BREED PERCENTILE RANKING PER EPD														
95	95	50	40	75	70	80	75	90	20	10	15	85	45	35
Breed %		55GV 45AN			OWNER:		Rex Wood Farms							

Balancer Black Homo Polled **374**
DRGF 243K

ASCH JNCC RESOLUTE DIRECTIVE
 JNCC RED DIRECTIVE 367A
 JNCC RIKKI FORTUNE 09X

RES TRAVELER 251 004 6201
 DRGF 425B
 DRGF MISS JENNIFER

REG #:	1571989
BD:	9/12/2022
BW:	76
WW:	569

CE	BW	WW	YW	MK	TM	CEM	ST	DOC	CW	REA	MB	\$C	FPI	EPI
13	-0.6	76	110	15	52	7	17	11	30	.57	.07	110.51	76.02	100.72
BREED PERCENTILE RANKING PER EPD														
50	45	35	55	>95	85	45	20	70	40	>95	45	80	65	
Breed %		75GV 25AN			OWNER:		Duck River Gelbvieh							

Balancer Homo Black Homo Polled **372**
RDW 24K KML

VRT LAZY TV TANK X315
 NORG COMBAT READY D54
 NORG QUEEN A54

BTBR BLACK CROSS HERO 4031
 RDW 704G WTL
 CAZ BLACK BALANCE 14W

REG #:	1575689
BD:	9/10/2022
BW:	78
WW:	541

CE	BW	WW	YW	MK	TM	CEM	ST	DOC	CW	REA	MB	\$C	FPI	EPI
13	0.3	74	106	22	60	8	16	14	50	.70	.36	112.44	81.46	95.99
BREED PERCENTILE RANKING PER EPD														
50	65	40	65	60	45	30	30	10	15	20	50	40	55	70
Breed %		50GV 50AN			OWNER:		Rex Wood Farms							

Balancer Black Homo Polled **375**
JGPG Sand Trap 2212K ET

CTR SANDHILLS 0065X
 DLW SAND TRAP ET
 DLW MS MAT'RON 802U

BC BALANCE 516-7
 JGPG LADY GRANITE 321A ET
 BTI 2132P ET

REG #:	1564762
BD:	9/12/2022
BW:	ET
WW:	ET

CE	BW	WW	YW	MK	TM	CEM	ST	DOC	CW	REA	MB	\$C	FPI	EPI
11	2.9	79	116	23	63	5	18	10	40	.61	.27	125.58	79.16	61.12
BREED PERCENTILE RANKING PER EPD														
80	>95	20	40	50	30	80	10	90	35	30	70	15	65	95
Breed %		55GV 45AN			OWNER:		JGP Gelbvieh							



Balancer Homo Black Homo Polled **376**
TMMW Mr Final Answer 130K

SEDGWICKS FINAL ANSWER Y307
 DJZ FINAL ANSWER 8E
 HUTR JUSTAMERE CINDY LOU

JJNR READY CASH B52C
 TMMW MISS READY CASH 79F
 TMMW MISS MYTTY 42B

REG #:	1581570
BD:	9/12/2022
BW:	72
WW:	671

CE	BW	WW	YW	MK	TM	CEM	ST	DOC	CW	REA	MB	\$C	FPI	EPI
16	-1.2	66	98	17	50	9	17	13	35	.46	.20	112.78	74.54	69.15
BREED PERCENTILE RANKING PER EPD														
15	35	75	80	95	95	15	20	25	55	65	85	35	85	90
Breed %		52GV 48AN			OWNER:		Mulroy Farms LLC							

BALANCER BULLS

Balancer Homo Black Homo Polled **377**
MART JGPG Rebel Yell 2213K

JRI PROBITY 254D28
 TJB REBEL YELL 804F ET
 TJB ANISSA 921U ET

CTR GOOD NIGHT 715T
 MART JGPG VICK 5114C
 VER VICKIE 890T

REG #:	1564716
BD:	9/13/2022
BW:	68
WW:	579

CE	BW	WW	YW	MK	TM	CEM	ST	DOC	CW	REA	MB	\$C	FPI	EPI
13	0.1	56	85	25	53	7	17	13	26	.21	.30	109.88	69.44	84.20
BREED PERCENTILE RANKING PER EPD														
50	65	>95	>95	30	85	45	20	25	80	95	65	45	>95	80
Breed %		50GV 44AN 6AR			OWNER:		JGP Gelbvieh							

Balancer Black Homo Polled **381**
TMGC SB Paparazzi 198K

V A R DISCOVERY 2240
 JKGF CIVIL WAR E92
 JKGF LOTTIE C92

BTBR SAGUARO 8111F ET
 TMGC SB VERBENA 156H
 TMGC SB SILENCE 264E

REG #:	1564438
BD:	9/18/2022
BW:	74
WW:	572

CE	BW	WW	YW	MK	TM	CEM	ST	DOC	CW	REA	MB	\$C	FPI	EPI
14	-0.7	87	146	18	62	10	17	11	48	.78	.67	122.19	99.72	172.27
BREED PERCENTILE RANKING PER EPD														
35	45	5	3	90	35	10	20	70	15	10	4	20	2	10
Breed %		56GV 41AN 3AR			OWNER:		Stuecken Bros							

Balancer Black Homo Polled **378**
TMGC SB Cactus 275K

TMMW DESTINATION 82Y
 BTBR SAGUARO 8111F ET
 JEB BCC MISS OBJECTIVE 41W

LRSF LRL SPOTLIGHT E169
 TMGC SB TRIBUTE 32G
 TMGC SB VENUS 62C

RFI

REG #:	1564580
BD:	9/14/2022
BW:	71
WW:	553

CE	BW	WW	YW	MK	TM	CEM	ST	DOC	CW	REA	MB	\$C	FPI	EPI
18	-4.2	58	87	20	48	10	17	10	9	.16	.47	111.81	80.85	82.15
BREED PERCENTILE RANKING PER EPD														
5	3	95	95	75	95	10	20	90	>95	>95	25	40	55	85
Breed %		69GV 25AN 6AR			OWNER:		Stuecken Bros							

Balancer Homo Black Scurred **382**
JEB BCC Black Balance 18K

SCHIEFELBEIN ALLIED 514
 SKF DUNNS ALLIED JACKPOT 111H
 SKF DUNNS EXCLUSVIE JACKPOT 860F ET

BNG OVERTIME 23Y
 JEB BCC MISS BALANCE 41A
 BWF BRANDYWINE NINETTE 313N

REG #:	1561774
BD:	9/19/2022
BW:	72
WW:	621

CE	BW	WW	YW	MK	TM	CEM	ST	DOC	CW	REA	MB	\$C	FPI	EPI
13	-0.3	66	94	30	64	8	19	15	33	.46	.50	130.70	81.46	154.40
BREED PERCENTILE RANKING PER EPD														
50	55	75	90	4	25	30	5	4	60	65	20	10	55	15
Breed %		50GV 50AN			OWNER:		Burbank Cattle Company							

Balancer Homo Black Homo Polled **379**
JGPG Rebel Yell 2220K

JRI PROBITY 254D28
 TJB REBEL YELL 804F ET
 TJB ANISSA 921U ET

DLW SAND TRAP ET
 JGPG LEE ANN 8223F ET
 JGPG EMMA 275Z

RFI

REG #:	1564718
BD:	9/17/2022
BW:	70
WW:	579

CE	BW	WW	YW	MK	TM	CEM	ST	DOC	CW	REA	MB	\$C	FPI	EPI
12	1.5	66	101	27	60	6	18	10	32	.30	.67	123.83	82.92	83.53
BREED PERCENTILE RANKING PER EPD														
65	90	75	75	15	45	65	10	90	65	90	4	20	45	80
Breed %		50GV 50AN			OWNER:		JGP Gelbvieh							

Balancer Homo Black Homo Polled **383**
TMGC SB Onyx 290K

BASIN PAYWEIGHT 1682
 MEAD BLACK ONYX R425
 MEAN LAANK109

TMGC SB SILENT NIGHTS 2005B
 TMGC SB SILENCE 275E
 TMGC SB VENUS 230B

REG #:	1572246
BD:	9/19/2022
BW:	72
WW:	583

CE	BW	WW	YW	MK	TM	CEM	ST	DOC	CW	REA	MB	\$C	FPI	EPI
16	-3.6	67	113	28	62	11	16	14	27	.26	.67	113.11	91.57	141.63
BREED PERCENTILE RANKING PER EPD														
15	5	70	45	10	35	3	30	10	80	95	4	35	10	25
Breed %		25GV 69AN 6AR			OWNER:		Stuecken Bros							

Balancer Homo Black Homo Polled **380**
DRGF 261K

GMF FORTUNE 616D
 HRZN H182
 HRZN E103

JEB BCC BLACK BALANCE 13D
 DRGF 49H
 TMMW MISS MEDINA 177D

REG #:	1571996
BD:	9/18/2022
BW:	76
WW:	664

CE	BW	WW	YW	MK	TM	CEM	ST	DOC	CW	REA	MB	\$C	FPI	EPI
12	3.2	90	143	21	66	6	15	11	56	.80	.27	106.29	86.49	170.97
BREED PERCENTILE RANKING PER EPD														
65	>95	3	3	70	15	65	45	70	5	10	70	55	30	10
Breed %		70GV 30AN			OWNER:		Duck River Gelbvieh							

Balancer Homo Black Homo Polled **384**
JEB BCC Black Balance 26K

JKGF CHIEF JUSTICE C205
 OGS OVER FOR JUSTICE 217F
 WHITE ROCK PRIDE U 217

TMGC SB ARNOLD 225W
 JEB BCC MS ARNOLD 22H
 JGPG MISS ELLIJAY 8213F

REG #:	1561780
BD:	9/21/2022
BW:	70
WW:	618

CE	BW	WW	YW	MK	TM	CEM	ST	DOC	CW	REA	MB	\$C	FPI	EPI
13	0.5	88	146	22	66	8	12	18	51	.67	.45	94.25	93.03	156.93
BREED PERCENTILE RANKING PER EPD														
50	70	4	3	60	15	30	85	1	10	20	30	80	10	15
Breed %		49GV 51AN			OWNER:		Burbank Cattle Company							

BALANCER BULLS

Balancer Homo Black Homo Polled **385**

RFFM Saguaro Spike 39K

TMMW DESTINATION 82Y
BTBR SAGUARO 8111F ET
JEB BCC MISS OBJECTIVE 41W

JJNR MONEY TALKS B43C
RFFM 18E MONEY TALKS 20G
RMMF EDEN IMPACT 18E

REG #:	1549752
BD:	9/22/2022
BW:	76
WW:	614

CE	BW	WW	YW	MK	TM	CEM	ST	DOC	CW	REA	MB	\$C	FPI	EPI
16	-1.4	78	122	17	56	10	17	11	30	.61	.51	119.07	90.23	142.98
BREED PERCENTILE RANKING PER EPD														
15	30	25	25	95	70	10	20	70	70	30	20	25	15	20
Breed %		63GV 37AN			OWNER:		Reinert Family Farm							

Balancer Homo Black Homo Polled **389**

JGPG Casino 2229K ET

KR CASINO 6243
GDV T BAR S CASINO 115G ET
KDV T BAR S A LA MODE 7B

S A V PIONEER 7301
VER MISS JULIA 519B
PRTY VER MISS JULIA 254Y ET

REG #:	1564770
BD:	9/23/2022
BW:	ET
WW:	ET

CE	BW	WW	YW	MK	TM	CEM	ST	DOC	CW	REA	MB	\$C	FPI	EPI
13	0.5	67	106	25	59	6	10	11	33	.49	.29			76.73
BREED PERCENTILE RANKING PER EPD														
50	70	70	65	30	50	65	>95	70	60	55	65			80
Breed %		28GV 72AN			OWNER:		JGP Gelbvieh							

Balancer Homo Black Homo Polled **386**

RFFM Mr Homegrown Saguaro 41K

TMMW DESTINATION 82Y
BTBR SAGUARO 8111F ET
JEB BCC MISS OBJECTIVE 41W

TMGC SB ARNOLD 225W
BWF BRANDYWINE CARRIE 538C
BWF BRANDYWINE ANTONIA 316A

REG #:	1549754
BD:	9/22/2022
BW:	81
WW:	636

CE	BW	WW	YW	MK	TM	CEM	ST	DOC	CW	REA	MB	\$C	FPI	EPI
12	1.4	84	133	22	64	8	13	10	39	.41	.60	98.11	92.74	167.97
BREED PERCENTILE RANKING PER EPD														
65	90	10	10	60	25	30	75	90	40	75	10	70	10	10
Breed %		69GV 31AN			OWNER:		Reinert Family Farm							

Balancer Homo Black Homo Polled **390**

JEB BCC Black Balance 40K

CCRO CAROLINA LEVERAGE 3214A
ERTL BARGAINING CHIP D677
KCS BLACKBIRD 7707

MTB BCC PEDRO 6A
JEB BCC MS PEDRO 21G
JEB BCC MISS BALANCE 39A

REG #:	1561794
BD:	9/25/2022
BW:	64
WW:	554

CE	BW	WW	YW	MK	TM	CEM	ST	DOC	CW	REA	MB	\$C	FPI	EPI
12	0.4	76	113	25	63	8	16	12	37	.30	.69	111.08	90.64	146.70
BREED PERCENTILE RANKING PER EPD														
65	70	35	45	30	30	30	50	45	90	4	40	15	20	
Breed %		44GV 56AN			OWNER:		Burbank Cattle Company							

Balancer Homo Black Homo Polled **387**

JGPG Casino 2228K ET

KR CASINO 6243
GDV T BAR S CASINO 115G ET
KDV T BAR S A LA MODE 7B

S A V PIONEER 7301
VER MISS JULIA 519B
PRTY VER MISS JULIA 254Y ET

REG #:	1564769
BD:	9/23/2022
BW:	ET
WW:	ET

CE	BW	WW	YW	MK	TM	CEM	ST	DOC	CW	REA	MB	\$C	FPI	EPI
14	-1.8	69	113	25	60	8	15	9	22	.30	.36			82.46
BREED PERCENTILE RANKING PER EPD														
35	25	65	45	30	45	30	45	95	90	90	50			45
Breed %		28GV 72AN			OWNER:		JGP Gelbvieh							

Balancer Black Homo Polled **391**

DRGF 275K

ASCH JNCC RESOLUTE DIRECTIVE
JNCC RED DIRECTIVE 367A
JNCC RIKKI FORTUNE 009X

DBCC FINAL OBJECTIVE
JEB DR BCC MISS BALANCE 227Z
JEB BCC MS SHOGUN 84X

REG #:	1571985
BD:	9/30/2022
BW:	78
WW:	707

CE	BW	WW	YW	MK	TM	CEM	ST	DOC	CW	REA	MB	\$C	FPI	EPI
13	-0.9	80	117	24	64	7	15	12	32	.63	.18	106.06	82.67	131.86
BREED PERCENTILE RANKING PER EPD														
50	40	20	40	40	25	45	45	50	65	30	90	55	45	30
Breed %		75GV 25AN			OWNER:		Duck River Gelbvieh							

Balancer Homo Black Homo Polled **388**

TMGC SB Cactus 297K

TMMW DESTINATION 82Y
BTBR SAGUARO 8111F ET
JEB BCC MISS OBJECTIVE 41W

TMGC SB SILENT NIGHTS 2005B
TMGC SB SILENCE 15G
TMGC SB MADONNA 03D

REG #:	1564600
BD:	9/23/2022
BW:	68
WW:	605

CE	BW	WW	YW	MK	TM	CEM	ST	DOC	CW	REA	MB	\$C	FPI	EPI
16	-2.4	74	118	24	62	10	17	12	33	.45	.45	115.31	88.89	149.02
BREED PERCENTILE RANKING PER EPD														
15	15	40	35	40	35	10	20	50	60	65	30	30	20	20
Breed %		55GV 45AN			OWNER:		Stuecken Bros							

Balancer Homo Black Homo Polled **392**

JJNR Mr Civil War B21K

V A R DISCOVERY 2240
JKGF CIVIL WAR E92
JKGF LOTTIE C92

TMGC SB ARNOLD 225W
JJNR MISS ARNOLD 43YE
JJNR MISS GOOD NIGHT 43RY

REG #:	1576054
BD:	9/30/2022
BW:	72
WW:	593

CE	BW	WW	YW	MK	TM	CEM	ST	DOC	CW	REA	MB	\$C	FPI	EPI
12	-0.2	85	132	22	64	9	19	12	65	.48	.35	131.66	87.64	149.25
BREED PERCENTILE RANKING PER EPD														
65	55	10	15	60	25	15	5	50	1	60	50	10	25	20
Breed %		44GV 56AN			OWNER:		Nelson Ranch							

BALANCER BULLS

Balancer Homo Black Homo Polled **393**
JGPG Warner 2235K

DCH HILLE X102
 DLW WARNER 0152C
 RR VALENTINE 0152

MLG 431B
 JGPG SHANIA 8247F
 JGPG SHANIA 917W ET

REG #:	1564723
BD:	10/1/2022
BW:	60
WW:	577

CE	BW	WW	YW	MK	TM	CEM	ST	DOC	CW	REA	MB	\$C	FPI	EPI
15	-2.0	68	114	28	62	8	13	11	48	.65	.11	84.14	76.63	119.02
BREED PERCENTILE RANKING PER EPD														
25	20	65	45	10	35	30	75	70	15	25	95	95	80	45
Breed %	44GV 44AN 12AR		OWNER:		JGP Gelbvieh									



Balancer Homo Black Polled **394**
JJNR Mr Civil War B23K

V A R DISCOVERY 2240
 JKGF CIVIL WAR E92
 JKGF LOTTIE C92

JKGF DITKA C85
 JJNR MISS DITKA 61SF
 JJNR MISS EMBLAZON BAL 61DS

REG #:	1576056
BD:	10/1/2022
BW:	75
WW:	598

CE	BW	WW	YW	MK	TM	CEM	ST	DOC	CW	REA	MB	\$C	FPI	EPI
11	2.6	90	150	19	64	8	17	11	44	.49	.21	118.12	85.05	174.12
BREED PERCENTILE RANKING PER EPD														
80	>95	3	2	85	25	30	20	70	25	55	85	25	35	10
Breed %	50GV 50AN		OWNER:		Nelson Ranch									

Balancer Homo Black Homo Polled **397**
JJNR Mr Probity B24K

BASIN PAYWEIGHT 1682
 JRI PROBITY 254D28
 JRI CLEMENTINE 254Z8

MCFG ASTEROID 039A
 JJNR MISS ASTEROID 443E
 JJNR MISS GOVENOR 443U

REG #:	1576057
BD:	10/3/2022
BW:	69
WW:	573

CE	BW	WW	YW	MK	TM	CEM	ST	DOC	CW	REA	MB	\$C	FPI	EPI
18	-4.2	70	107	23	58	10	20	13	21	.11	.55	132.89	90.19	117.24
BREED PERCENTILE RANKING PER EPD														
5	3	60	60	50	60	10	3	25	90	>95	15	10	15	45
Breed %	55GV 45AN		OWNER:		Nelson Ranch									

Balancer Homo Black Homo Polled **395**
TMGC SB Optimal 306K

VRT LAZY TV WATCHMAN W021
 SKF DUNN OPTIMUS 031B
 SKF DUNNS MISS SANDY 125Y

DLW ALL BUSINESS 408Y
 TMGC SB MADONNA 191A
 SB QUEEN DOLLARS 8161

REG #:	1564607
BD:	10/1/2022
BW:	73
WW:	590

CE	BW	WW	YW	MK	TM	CEM	ST	DOC	CW	REA	MB	\$C	FPI	EPI
14	-0.8	65	97	30	63	10	12	15	26	.33	.57	93.40	83.77	67.14
BREED PERCENTILE RANKING PER EPD														
35	40	80	85	4	30	10	85	4	80	85	15	80	40	95
Breed %	48GV 50AN 2XX		OWNER:		Stuecken Bros									

Balancer Homo Black Homo Polled **398**
JJNR Mr Civil War B26K

V A R DISCOVERY 2240
 JKGF CIVIL WAR E92
 JKGF LOTTIE C92

S A V BRUISER 9164
 JJNR MISS BRUISER 18CE
 JJNR MISS JACKPOT 18WC

REG #:	1576059
BD:	10/3/2022
BW:	69
WW:	568

CE	BW	WW	YW	MK	TM	CEM	ST	DOC	CW	REA	MB	\$C	FPI	EPI
13	0.0	85	141	21	63	9	18	13	37	.32	.73	128.94	98.67	164.51
BREED PERCENTILE RANKING PER EPD														
50	60	10	4	70	30	15	10	25	45	90	3	10	2	10
Breed %	50GV 50AN		OWNER:		Nelson Ranch									

Balancer Homo Black Homo Polled **396**
JJNR Mr Civil War B25K

V A R DISCOVERY 2240
 JKGF CIVIL WAR E92
 JKGF LOTTIE C92

DCH HILLE STOCK OPTIONS D410
 JJNR MISS STOCK OPTION 40MH
 JJNR MISS ASTEROID 40ME

RFI

REG #:	1576058
BD:	10/3/2022
BW:	66
WW:	533

CE	BW	WW	YW	MK	TM	CEM	ST	DOC	CW	REA	MB	\$C	FPI	EPI
12	0.1	74	124	20	57	9	18	9	36	.68	.59	131.61	88.54	146.59
BREED PERCENTILE RANKING PER EPD														
65	65	40	25	75	65	15	10	95	50	20	10	10	20	20
Breed %	62GV 38AN		OWNER:		Nelson Ranch									

Balancer Homo Black Homo Polled **399**
RDW 27K

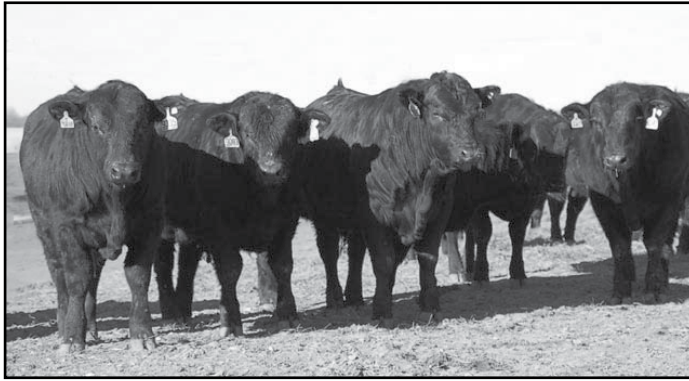
BVC MR BALANCE 516E
 LSR FLINT HILLS 47H
 RLS FOCUS ON GOVERNOR 39Y

TMGC SB ARNOLD 225W
 RDW 713G
 CAZ MISS BLACK 64U

REG #:	1577016
BD:	10/3/2022
BW:	76
WW:	550

CE	BW	WW	YW	MK	TM	CEM	ST	DOC	CW	REA	MB	\$C	FPI	EPI
8	1.3	62	100	22	54	4	17	13	15	.67	.48	116.61	76.30	59.79
BREED PERCENTILE RANKING PER EPD														
>95	85	90	80	60	80	90	20	25	>95	20	25	30	80	95
Breed %	50GV 50AN		OWNER:		Rex Wood Farms									

BALANCER BULLS



Balancer Black Polled **403**
JGPG Warner 2239K
 DCH HILLE X102
 DLW WARNER 0152C
 RR VALENTINE 0152
 S A V BRILLIANCE 8077
 JGPG LADY A 6219D
 JGPG LADY ANTEBELLUM 104Y ET

REG #:	1564754
BD:	10/6/2022
BW:	64
WW:	629

CE	BW	WW	YW	MK	TM	CEM	ST	DOC	CW	REA	MB	\$C	FPI	EPI	
15	0.3	78	119	28	68	7	16	14	50	.62	.07	105.11	78.02	72.97	
BREED PERCENTILE RANKING PER EPD															
25	65	25	35	10	10	45	30	10	15	30	>95	55	70	90	
Breed %	44GV 56AN				OWNER:				JGP Gelbvich						

Balancer Black Homo Polled **400**
TMGC SB Cactus 304K
 TMMW DESTINATION 82Y
 BTBR SAGUARO 8111F ET
 JEB BCC MISS OBJECTIVE 41W
 LRSF LRL SPOTLIGHT E169
 TMGC SB TRIBUTE 264G
 TMGC SB VENUS 223E

REG #:	1564605
BD:	10/4/2022
BW:	72
WW:	562

CE	BW	WW	YW	MK	TM	CEM	ST	DOC	CW	REA	MB	\$C	FPI	EPI	
15	-2.4	73	106	20	56	9	16	8	26	.40	.48	109.43	87.03	114.70	
BREED PERCENTILE RANKING PER EPD															
25	15	45	65	75	70	15	30	>95	80	75	25	45	25	50	
Breed %	69GV 25AN 6AR				OWNER:				Stuecken Bros						

Balancer Homo Black Homo Polled **404**
JEB BCC Black Balance 56K
 CCRO CAROLINA LEVERAGE 3214A
 ERTL BARGAINING CHIP D677
 KCS BLACKBIRD 7707
 TMGC SB ARNOLD 225W
 JEB BCC MS ARNOLD 13G
 JEB BCC MISS BALANCE 15A

REG #:	1561807
BD:	10/6/2022
BW:	76
WW:	612

CE	BW	WW	YW	MK	TM	CEM	ST	DOC	CW	REA	MB	\$C	FPI	EPI	
11	0.6	76	109	25	63	6	18	13	41	.70	.62	126.42	88.31	123.24	
BREED PERCENTILE RANKING PER EPD															
80	75	35	55	30	30	65	10	25	35	20	10	15	20	40	
Breed %	47GV 53AN				OWNER:				Burbank Cattle Company						

Balancer Homo Black Homo Polled **401**
JJNR Mr Black Ice B29K
 HYEK BLACK IMPACT 3960N
 SLMG BLACK ICE
 JENJ MISS JENJ 507C ET
 EGL TENDERLOIN N407
 JJNR MISS TENDERLOIN 40XG
 JJNR 40TX

REG #:	1576062
BD:	10/5/2022
BW:	70
WW:	570

CE	BW	WW	YW	MK	TM	CEM	ST	DOC	CW	REA	MB	\$C	FPI	EPI	
14	0.8	82	125	18	59	6	12	15	18	.26	.44	87.75	88.17	140.98	
BREED PERCENTILE RANKING PER EPD															
35	80	15	20	90	50	65	85	4	95	95	30	90	20	25	
Breed %	54GV 46AN				OWNER:				Nelson Ranch						

Balancer Homo Black Homo Polled **405**
JJNR Mr Infinity B31K
 TAU MR IN FOCUS 22Z
 TAU INFINITY 47C
 TAU MIA 363A
 JKGF DITKA C85
 JJNR MISS DITKA 40PF
 JJNR MISS JACKPOT 40PD

REG #:	1576064
BD:	10/7/2022
BW:	69
WW:	532

CE	BW	WW	YW	MK	TM	CEM	ST	DOC	CW	REA	MB	\$C	FPI	EPI	
12	-0.7	74	117	24	61	7	20	10	31	.38	.55	132.02	87.63	120.41	
BREED PERCENTILE RANKING PER EPD															
65	45	40	40	40	40	45	3	90	65	80	15	10	25	45	
Breed %	53GV 47AN				OWNER:				Nelson Ranch						

Balancer Homo Black Homo Polled **402**
JJNR Mr Civil War B30K
 V A R DISCOVERY 2240
 JKGF CIVIL WAR E92
 JKGF LOTTIE C92
 JJNR MR PAYWEIGHT B42E
 JJNR MISS WIDELOAD 18AH
 JJNR MISS TRENDSETTER 18WA

REG #:	1576063
BD:	10/6/2022
BW:	65
WW:	527

CE	BW	WW	YW	MK	TM	CEM	ST	DOC	CW	REA	MB	\$C	FPI	EPI	
14	-1.3	66	105	20	53	9	18	9	34	.37	.57	125.14	84.57	102.06	
BREED PERCENTILE RANKING PER EPD															
35	30	75	65	75	85	15	10	95	55	80	15	15	35	65	
Breed %	56GV 44AN				OWNER:				Nelson Ranch						

Balancer Black Homo Polled **406**
JGPG Hilltop 2243K
 KCF BENNETT QUALITY FOCUSED
 MLG 431B
 MLG MEADOWLARK TWILA 389Y ET
 DCSF POST ROCK SILVER 233U1
 TJB VELVET 912U 344Z
 TJB VELVET 912U ET

REG #:	1564755
BD:	10/9/2022
BW:	74
WW:	593

CE	BW	WW	YW	MK	TM	CEM	ST	DOC	CW	REA	MB	\$C	FPI	EPI	
14	-0.5	74	116	21	58	6	18	14	41	.34	.51	118.33	86.08	135.74	
BREED PERCENTILE RANKING PER EPD															
35	50	40	40	70	60	65	10	10	35	85	20	25	30	30	
Breed %	50GV 50AN				OWNER:				JGP Gelbvich						

BALANCER BULLS

Balancer Homo Black Polled
DJZ 2K3

STG MR MEDINA 51Y14
TMMW COLONEL 53C
TMMW KRUGERS CIM ROSE 11Y

MOLITOR PLAYBOY 469-157
DJZ 240J
DJZ 111F

407
RFI

REG #:	1585686
BD:	10/9/2022
BW:	70
WW:	591

CE	BW	WW	YW	MK	TM	CEM	ST	DOC	CW	REA	MB	\$C	FPI	EPI
14	-0.4	70	107	25	57	9	10	11	51	30	.28	75.66	77.98	125.47
BREED PERCENTILE RANKING PER EPD														
35	50	60	60	30	65	15	>95	70	10	90	70	>95	70	40
Breed %	50GV 50AN		OWNER:		Zimmerman Gelbvieh									

Balancer Homo Black Homo Polled
TMMW Mr Allied 190K

SCHIEFELBEIN ALLIED 514
DMP F185
DMP D142

TMMW MR GRANITE 180A
TMMW MISS GRANITE 208D
TMMW MISS KRUGERS ANN 8461U

411
RFI

REG #:	1559779
BD:	10/12/2022
BW:	74
WW:	668

CE	BW	WW	YW	MK	TM	CEM	ST	DOC	CW	REA	MB	\$C	FPI	EPI
15	-1.9	68	105	22	56	9	16	11	21	17	.59	107.85	86.51	107.37
BREED PERCENTILE RANKING PER EPD														
25	20	65	65	60	70	15	30	70	90	>95	10	50	30	60
Breed %	59GV 41AN		OWNER:		Mulroy Farms LLC									

Balancer Homo Black Homo Polled
JJNR Mr Infinity B32K

TAU MR IN FOCUS 22Z
TAU INFINITY 47C
TAU MIA 363A

MILL BAR HICKOK 7242
JJNR MISS HICKOK B43G
JJNR MISS PAYWEIGHT B43D

408
RFI

REG #:	1576065
BD:	10/10/2022
BW:	72
WW:	527

CE	BW	WW	YW	MK	TM	CEM	ST	DOC	CW	REA	MB	\$C	FPI	EPI
12	1.8	78	125	25	64	5	18	13	34	.52	.55	125.33	87.36	142.45
BREED PERCENTILE RANKING PER EPD														
65	90	25	20	30	25	80	10	25	55	50	15	15	25	25
Breed %	28GV 72AN		OWNER:		Nelson Ranch									

Balancer Black Polled
MTB BCC Black Balance 73K

SCHIEFELBEIN ALLIED 514
SKF DUNNS ALLIED JACKPOT 1111H
SKF DUNNS EXCLUSIVE JACKPOT 860F ET

GDW SHOGUN 8155U
MTB BCC MISS BALANCE 37Z
JEB BCC MISS BALANCE 44T

412
RFI

REG #:	1561824
BD:	10/17/2022
BW:	76
WW:	644

CE	BW	WW	YW	MK	TM	CEM	ST	DOC	CW	REA	MB	\$C	FPI	EPI
14	0.7	68	103	31	65	8	12	14	19	.50	.52	95.82	83.06	125.88
BREED PERCENTILE RANKING PER EPD														
35	75	65	70	3	20	30	85	10	95	55	20	75	45	35
Breed %	63GV 25AN 12AR		OWNER:		Burbank Cattle Company									

Balancer Homo Black Homo Polled
JEB BCC Black Balance 63K

CCRO CAROLINA LEVERAGE 3214A
ERTL BARGAINING CHIP D677
KCS BLACKBIRD 7707

BTBR NEVADA 1170Y
JGPG MISS ELLIJAY 8213F
JGPG MISS ELLIJAY 6201D

409
RFI

REG #:	1561814
BD:	10/10/2022
BW:	74
WW:	569

CE	BW	WW	YW	MK	TM	CEM	ST	DOC	CW	REA	MB	\$C	FPI	EPI
16	-0.5	67	100	24	58	9	17	11	31	.19	.85	118.29	90.81	138.42
BREED PERCENTILE RANKING PER EPD														
15	50	70	80	40	60	15	20	70	65	>95	1	25	15	25
Breed %	45GV 55AN		OWNER:		Burbank Cattle Company									

Balancer Homo Black Homo Polled
JJNR Mr Infinity B34K

TAU MR IN FOCUS 22Z
TAU INFINITY 47C
TAU MIA 363A

R B TOUR OF DUTY 177
MS TOUR OF DUTY 40RAE
MISS REALLY WINDY 40RA

413
RFI

REG #:	1576067
BD:	10/19/2022
BW:	72
WW:	617

CE	BW	WW	YW	MK	TM	CEM	ST	DOC	CW	REA	MB	\$C	FPI	EPI
10	0.1	74	121	26	63	5	17	10	48	.91	.49	118.80	86.04	146.95
BREED PERCENTILE RANKING PER EPD														
90	65	40	30	25	30	80	20	90	15	3	20	25	30	20
Breed %	28GV 72AN		OWNER:		Nelson Ranch									

Balancer Homo Black Homo Polled
JJNR Mr Civil War B33K

V A R DISCOVERY 2240
JKGF CIVIL WAR E92
JKGF LOTTIE C92

VRT LAZY TV WATCHMAN W021
JJNR MISS WATCHMAN 152AD
JJNR MISS IN FOCUS BAL 152XA

410
RFI

REG #:	1576066
BD:	10/12/2022
BW:	70
WW:	592

CE	BW	WW	YW	MK	TM	CEM	ST	DOC	CW	REA	MB	\$C	FPI	EPI
12	1.7	93	146	19	65	8	15	13	61	.57	.56	113.03	96.14	163.47
BREED PERCENTILE RANKING PER EPD														
65	90	2	3	85	20	30	45	25	2	40	15	35	4	10
Breed %	50GV 50AN		OWNER:		Nelson Ranch									

Balancer Homo Black Homo Polled
RDW 21K TJL

JJNR MR PAYWEIGHT B42E
JJNR MR WIDELoad B42H
JJNR MISS DITKA 43YF

TMGC SB ARNOLD 225W
RDW 409D
RDW MISS FORTUNE 185A

414
RFI

REG #:	1577015
BD:	10/25/2022
BW:	72
WW:	534

CE	BW	WW	YW	MK	TM	CEM	ST	DOC	CW	REA	MB	\$C	FPI	EPI
15	-3.3	70	118	21	56	8	14	12	38	.60	.54	97.42	89.28	160.53
BREED PERCENTILE RANKING PER EPD														
25	10	60	35	70	70	30	60	50	45	35	15	75	20	10
Breed %	45GV 55AN		OWNER:		Rex Wood Farms									

BALANCER BULLS

Balancer Homo Black Homo Polled **415**
DJZ 2K20 **RFI**

V A R DISCOVERY 2240
 JKGF CIVIL WAR E92
 JKGF LOTTIE C92
 BNG OVERTIME 23Y
 DJZ 109G
 JEB ZELDA 407Z ET

REG #:	1584114
BD:	10/28/2022
BW:	70
WW:	549

CE	BW	WW	YW	MK	TM	CEM	ST	DOC	CW	REA	MB	\$C	FPI	EPI
13	-1.3	79	135	18	57	8	19	11	42	.46	.60	132.08	92.81	161.14
BREED PERCENTILE RANKING PER EPD														
50	30	20	10	90	65	30	5	70	30	65	10	10	10	10
Breed %		50GV 50AN			OWNER:		Zimmerman Gelbvieh							

Balancer Homo Black Polled **418**
TMMW Mr Banker 220K **RFI**

TMMW NEVADAS MR BANKER 57A
 TMMW MR BANKER 154F
 TMMW MISS MIF 105B
 VRT LAZY TV SAM U451
 TMMW MISS SAM 90C
 TMMW MISS BISMARCK 159A

REG #:	1559894
BD:	10/28/2022
BW:	77
WW:	638

CE	BW	WW	YW	MK	TM	CEM	ST	DOC	CW	REA	MB	\$C	FPI	EPI
14	-0.8	61	83	20	50	8	17	10	13	.33	.39	117.22	75.35	55.80
BREED PERCENTILE RANKING PER EPD														
35	40	90	>95	75	95	30	20	90	>95	85	40	30	85	>95
Breed %		63GV 37AN			OWNER:		Mulroy Farms LLC							

Balancer Homo Black Homo Polled **416**
JJNR Mr Infinity B39K **RFI**

TAU MR IN FOCUS 22Z
 TAU INFINITY 47C
 TAU MIA 363A
 EGL TENDERLOIN N407
 JJNR MISS TENDERLOIN 405Z
 JJNR MISS SS ABJECTIVE 40S

REG #:	1576071
BD:	10/28/2022
BW:	65
WW:	548

CE	BW	WW	YW	MK	TM	CEM	ST	DOC	CW	REA	MB	\$C	FPI	EPI
17	-0.9	70	122	20	54	9	20	10	36	.41	.68	132.48	90.22	147.05
BREED PERCENTILE RANKING PER EPD														
10	40	60	25	75	80	15	3	90	50	75	4	10	15	20
Breed %		41GV 59AN			OWNER:		Nelson Ranch							

Balancer Black Polled **419**
DJZ 2K13 **RFI**

V A R DISCOVERY 2240
 JKGF CIVIL WAR E92
 JKGF LOTTIE C92
 CJSD DIEHL 1874B
 DJZ 131F
 LJMC PRISCILLA 3016A

REG #:	1585756
BD:	10/29/2022
BW:	71
WW:	679

CE	BW	WW	YW	MK	TM	CEM	ST	DOC	CW	REA	MB	\$C	FPI	EPI
13	-0.1	87	136	22	65	8	17	9	54	.91	.33	121.81	90.25	142.76
BREED PERCENTILE RANKING PER EPD														
50	60	5	10	60	20	30	20	95	10	3	55	20	15	20
Breed %		52GV 48AN			OWNER:		Zimmerman Gelbvieh							

Balancer Homo Black Homo Polled **417**
JJNR Mr Hammertime B38K **RFI**

CCRO CAROLINA LEVERAGE 3214A
 JKGF HAMMERTIME D008
 JKGF A008
 CTR GOOD NIGHT 715T
 JJNR MISS GOOD NIGHT 43RY
 JJNR MISS ALLIANCE 187 43ER

REG #:	1576070
BD:	10/28/2022
BW:	68
WW:	591

CE	BW	WW	YW	MK	TM	CEM	ST	DOC	CW	REA	MB	\$C	FPI	EPI
9	-0.6	70	98	25	60	6	16	13	33	.36	.17	111.50	74.39	70.56
BREED PERCENTILE RANKING PER EPD														
95	45	60	80	30	45	65	30	25	60	80	90	40	90	90
Breed %		63GV 37AN			OWNER:		Nelson Ranch							

Balancer Homo Black Homo Polled **420**
JJNR Mr Over For Justice B40K **RFI**

JKGF CHIEF JUSTICE C205
 OGSF OVER FOR JUSTICE 217F
 WHITE ROCK PRIDE U217
 CONNEALY BLACK GRANITE
 JJNR MISS BLACK GRANITE 207UC
 JJNR MISS EXCLUSIVE 207RU

REG #:	1576073
BD:	10/29/2022
BW:	70
WW:	617

CE	BW	WW	YW	MK	TM	CEM	ST	DOC	CW	REA	MB	\$C	FPI	EPI
20	-5.1	57	90	26	54	13	14	12	7	.40	.32	103.63	79.77	101.44
BREED PERCENTILE RANKING PER EPD														
1	1	95	95	25	80	1	60	50	>95	75	60	60	60	65
Breed %		50GV 50AN			OWNER:		Nelson Ranch							



Balancer Homo Black Homo Polled **421**
DJZ 2K15 **RFI**

V A R DISCOVERY 2240
 JKGF CIVIL WAR E92
 JKGF LOTTIE C92
 MTB BCC PEDRO 6A
 DJZ 118F
 JEB ZELDA 407Z ET

REG #:	1584109
BD:	10/30/2022
BW:	62
WW:	509

CE	BW	WW	YW	MK	TM	CEM	ST	DOC	CW	REA	MB	\$C	FPI	EPI
17	-2.4	68	114	19	53	11	17	13	36	.36	.62	123.38	88.71	129.46
BREED PERCENTILE RANKING PER EPD														
10	15	65	45	85	85	3	20	25	50	80	10	20	20	35
Breed %		53GV 47AN			OWNER:		Zimmerman Gelbvieh							

BALANCER BULLS

Balancer Homo Black Homo Polled **422**
JJNR Mr Franchise B41K

WWG C28
 MJBBC FRANCHISE F806
 ABCS 026C

CONNEALY BLACK GRANITE
 MISS BLACK GRANITE 41XC
 JJNR MISS OBJECTIVE 41DX

REG #:	1576074
BD:	11/1/2022
BW:	65
WW:	577

CE	BW	WW	YW	MK	TM	CEM	ST	DOC	CW	REA	MB	\$C	FPI	EPI
18	-2.2	67	112	23	56	10	12	14	23	.37	.47	79.28	85.76	132.33
BREED PERCENTILE RANKING PER EPD														
.5	20	70	50	50	70	10	85	10	90	80	25	>95	30	30
Breed %			50GV 50AN			OWNER:			Nelson Ranch					

Balancer Homo Black Homo Polled **426**
JJNR Mr Black Ice B43K

HYEK BLACK IMPACT 3960N
 SLMG BLACK ICE
 JENJ MISS JENJ 507C ET

TMGC SB ARNOLD 225W
 JJNR MISS ARNOLD 152CE
 JJNR MISS BLACK GRANITE 152XC

REG #:	1576076
BD:	11/8/2022
BW:	68
WW:	707

CE	BW	WW	YW	MK	TM	CEM	ST	DOC	CW	REA	MB	\$C	FPI	EPI
13	1.7	85	122	24	66	6	19	14	27	.38	.20	125.83	82.59	128.18
BREED PERCENTILE RANKING PER EPD														
.50	90	10	25	40	15	65	5	10	80	80	85	15	45	35
Breed %			67GV 33AN			OWNER:			Nelson Ranch					

Balancer Homo Black Homo Polled **423**
TMMW Mr Hole In One 226K

KHR 79B
 TMMW HOLE IN ONE 93D
 TMMW BEETHOVENS MISS PRIDE 3A

TAU MR KRUGERRAND 70M 130P
 TMMW MISS KRUGER 176A
 TMMW MISS CIM MISSY 8518U

REG #:	1559897
BD:	11/2/2022
BW:	69
WW:	710

CE	BW	WW	YW	MK	TM	CEM	ST	DOC	CW	REA	MB	\$C	FPI	EPI
16	-2.6	60	94	26	56	11	17	13	9	.02	.31	121.34	77.24	102.09
BREED PERCENTILE RANKING PER EPD														
15	15	95	90	25	70	3	20	25	>95	>95	60	20	75	65
Breed %			70GV 30AN			OWNER:			Mulroy Farms LLC					

Balancer Homo Black Polled **427**
JJNR Mr Lifeline B44K

S A V FINAL ANSWER 0035
 EGL LIFELINE B101
 EGL ESTELLE X014

VRT LAZY TV SAM U451
 JJNR MISS LAZY SAM 207ZB
 JJNR MISS CONNEALY 207XZ

REG #:	1576077
BD:	11/14/2022
BW:	68
WW:	653

CE	BW	WW	YW	MK	TM	CEM	ST	DOC	CW	REA	MB	\$C	FPI	EPI
15	-0.7	74	108	26	63	7	13	13	30	.92	.30	97.83	83.09	75.21
BREED PERCENTILE RANKING PER EPD														
25	45	40	60	25	30	45	75	25	70	3	65	75	45	90
Breed %			63GV 37AN			OWNER:			Nelson Ranch					

Balancer Black Homo Polled **424**
CHMB BCC Black Balance 87K

SCHIEFELBEIN ALLIED 514
 SKF DUNNS ALLIED JACKPOT 111H
 SKF DUNNS EXCLUSIVE JACKPOT 860F ET

ERTL BARGAINING CHIP D677
 MTB BCC MS CHIPPIE 46F
 BWF BRANDYWINE BIDELIA 4123B

REG #:	1561838
BD:	11/3/2022
BW:	72
WW:	586

CE	BW	WW	YW	MK	TM	CEM	ST	DOC	CW	REA	MB	\$C	FPI	EPI
14	0.9	74	109	28	65	7	11	12	35	.70	.58	91.78	87.39	166.56
BREED PERCENTILE RANKING PER EPD														
35	80	40	55	10	20	45	95	50	55	20	10	85	25	10
Breed %			61GV 39AN			OWNER:			Burbank Cattle Company					

Balancer Homo Black Homo Polled **428**
JJNR Mr Black Ice B45K

HYEK BLACK IMPACT 3960N
 SLMG BLACK ICE
 JENJ MISS JENJ 507C ET

MCFG ASTEROID 039A
 JJNR MISS ASTEROID 40BE
 JJNR MISS 200P2 40ZB

REG #:	1576078
BD:	11/15/2022
BW:	70
WW:	731

CE	BW	WW	YW	MK	TM	CEM	ST	DOC	CW	REA	MB	\$C	FPI	EPI
12	2.7	90	149	24	69	4	12	13	54	.60	.36	90.20	89.50	149.63
BREED PERCENTILE RANKING PER EPD														
65	>95	3	2	40	10	90	85	25	10	35	50	85	15	15
Breed %			69GV 31AN			OWNER:			Nelson Ranch					

Balancer Homo Black Homo Polled **425**
JJNR Mr Lifeline B42K

S A V FINAL ANSWER 0035
 EGL LIFELINE B101
 EGL ESTELLE X014

DLGO MC RANSOME 103X
 JJNR MISS RANSOME 40YD
 JJNR MISS NEW STANDARD 40UY

REG #:	1576075
BD:	11/8/2022
BW:	67
WW:	549

CE	BW	WW	YW	MK	TM	CEM	ST	DOC	CW	REA	MB	\$C	FPI	EPI
14	-0.6	77	122	16	55	6	13	12	42	.72	.18	92.20	80.32	106.16
BREED PERCENTILE RANKING PER EPD														
35	45	30	25	95	75	65	75	50	30	15	90	85	60	60
Breed %			47GV 53AN			OWNER:			Nelson Ranch					

Balancer Homo Black Homo Polled **429**
JJNR Mr Payweight Plus B46K

BASIN PAYWEIGHT 1682
 BASIN PAYWEIGHT PLUS 6048
 EXAR ROYAL LASS 2810

EGL TENDERLOIN N407
 JJNR MISS TENDERLOIN 261A
 JJNR MISS GOOD NIGHT 261WY

REG #:	1576079
BD:	11/15/2022
BW:	65
WW:	589

CE	BW	WW	YW	MK	TM	CEM	ST	DOC	CW	REA	MB	\$C	FPI	EPI
18	-2.8	73	124	26	63	11	12	9	42	.42	1.00	102.34	103.36	143.14
BREED PERCENTILE RANKING PER EPD														
5	10	45	25	25	30	3	85	95	30	70	1	60	1	20
Breed %			31GV 69AN			OWNER:			Nelson Ranch					

BALANCER BULLS

Balancer Homo Black Homo Polled **430**
JGPG Hilltop 2248K

KCF BENNETT QUALITY FOCUSED
 MLG 431B
 MLG MEADOWLARK TWILA 389Y ET
 CTR SANDHILLS 0065X
 JEMG LEE ANN B834 ET
 VER LEE ANN 963U ET

REG #:	1564738
BD:	11/15/2022
BW:	68
WW:	682

CE	BW	WW	YW	MK	TM	CEM	ST	DOC	CW	REA	MB	\$C	FPI	EPI
12	1.1	74	114	22	59	6	16	13	44	.56	.25	108.74	77.70	142.67
BREED PERCENTILE RANKING PER EPD														
65	85	40	45	60	50	65	30	25	25	40	75	45	75	20
Breed %		37GV 63AN			OWNER:		JGP Gelbvich							

Balancer Homo Black Polled **434**
JJNR Mr Civil War B48K

V A R DISCOVERY 2240
 JKGF CIVIL WAR E92
 JKGF LOTTIE C92
 EGL LIFELINE B101
 JJNR MISS LIFE LINE 428BH
 JJNR MISS GOODNIGHT 428XB

REG #:	1576081
BD:	11/16/2022
BW:	65
WW:	614

CE	BW	WW	YW	MK	TM	CEM	ST	DOC	CW	REA	MB	\$C	FPI	EPI
16	-3.2	68	102	20	54	10	19	15	10	.07	.46	127.91	84.65	113.02
BREED PERCENTILE RANKING PER EPD														
15	10	65	75	75	80	10	5	4	>95	>95	25	15	35	50
Breed %		50GV 50AN			OWNER:		Nelson Ranch							

Balancer Homo Black Homo Polled **431**
JJNR Mr Black Ice B47K

HYEK BLACK IMPACT 3960N
 SLMG BLACK ICE
 JENJ MISS JENJ 507C ET
 EGL LIFELINE B101
 JJNR MISS LIFE LINE 40BH
 JJNR MISS ASTEROID 40BE

REG #:	1576080
BD:	11/15/2022
BW:	72
WW:	699

CE	BW	WW	YW	MK	TM	CEM	ST	DOC	CW	REA	MB	\$C	FPI	EPI
13	1.2	91	131	22	68	4	18	15	35	.69	.21	120.41	87.07	126.27
BREED PERCENTILE RANKING PER EPD														
50	85	2	15	60	10	90	10	4	55	20	85	25	25	35
Breed %		68GV 32AN			OWNER:		Nelson Ranch							

Balancer Homo Black Homo Polled **435**
DJZ 2K49

SKF DUNNS SHIFT 04C
 TMMW MR LEACHMAN SHIFT 141E
 TMMW MISS MEDINA 127C
 TMGC SB ARNOLD 225W
 DJZ 112E
 OZZ TARA 37A

REG #:	1584132
BD:	11/17/2022
BW:	68
WW:	669

CE	BW	WW	YW	MK	TM	CEM	ST	DOC	CW	REA	MB	\$C	FPI	EPI
19	-4.0	65	101	33	65	10	15	9	29	.36	.49	103.29	87.24	165.39
BREED PERCENTILE RANKING PER EPD														
3	4	80	75	1	20	10	45	95	75	80	20	60	25	10
Breed %		50GV 50AN			OWNER:		Zimmerman Gelbvich							

Balancer Homo Black Homo Polled **432**
LAW Mark 249K

SKF DUNNS DESTINY 056F
 LAW TENDING DESTINY 049H
 PROB MISS TENDERLOIN 223B
 BYERGO BLACK MAGIC 3348
 LAW 0416H
 WA MS LUCY ELINE 4068-6010

REG #:	1558878
BD:	11/16/2022
BW:	61
WW:	649

CE	BW	WW	YW	MK	TM	CEM	ST	DOC	CW	REA	MB	\$C	FPI	EPI
11	0.5	95	170	21	70	6	11	13	62	.53	.66		102.43	
BREED PERCENTILE RANKING PER EPD														
80	70	1	1	70	5	65	95	25	2	50	5		1	
Breed %		44GV 56AN			OWNER:		Lawman Farms							

Balancer Homo Black Homo Polled **436**
JJNR Mr Lifeline B49K

S A V FINAL ANSWER 0035
 EGL LIFELINE B101
 EGL ESTELLE X014
 BNG OVERTIME 23Y
 JJNR MISS OVERTIME 440YE
 JJNR MISS TENDERLOIN BAL U440Y

REG #:	1576082
BD:	11/17/2022
BW:	68
WW:	678

CE	BW	WW	YW	MK	TM	CEM	ST	DOC	CW	REA	MB	\$C	FPI	EPI
15	-0.2	80	123	19	59	7	12	10	39	.62	.49	91.04	90.08	144.10
BREED PERCENTILE RANKING PER EPD														
25	55	20	25	85	50	45	85	90	40	30	20	85	15	20
Breed %		44GV 56AN			OWNER:		Nelson Ranch							

Balancer Homo Black Homo Polled **433**
RBMS Mr Shift 125K

SKF DUNNS SHIFT 04C
 TMMW MR SHIFT 9F
 TMMW MISS MEDINA 91D
 RBMS SCC BLACK GOLD 722W ET
 RBMS SCC KELLY 28Y
 CKA WOODLAND KELLY 228M

REG #:	1563824
BD:	11/16/2022
BW:	68
WW:	697

CE	BW	WW	YW	MK	TM	CEM	ST	DOC	CW	REA	MB	\$C	FPI	EPI
17	-1.1	59	93	30	60	9	18	13	25	-.15	.66	120.87	83.52	127.91
BREED PERCENTILE RANKING PER EPD														
10	35	95	90	4	45	15	10	25	85	>95	5	20	40	35
Breed %		50GV 50AN			OWNER:		Simmons Cattle Company							

Balancer Homo Black Homo Polled **437**
DJZ 2K40

SKF DUNNS SHIFT 04C
 TMMW MR LEACHMAN SHIFT 141E
 TMMW MISS MEDINA 127C
 K C F BENNETT ABSOLUTE
 DJZ 3C
 OZZ CLEO 32A

REG #:	1584125
BD:	11/20/2022
BW:	70
WW:	589

CE	BW	WW	YW	MK	TM	CEM	ST	DOC	CW	REA	MB	\$C	FPI	EPI
17	-3.8	62	98	29	60	9	15	11	34	.36	.52	101.71	84.86	159.30
BREED PERCENTILE RANKING PER EPD														
10	4	90	80	10	45	15	45	70	55	80	20	65	35	10
Breed %		48GV 52AN			OWNER:		Zimmerman Gelbvich							

BALANCER BULLS

Balancer Homo Black Homo Polled **438**
SKF **Dunn's Tender Luigi 002L** **RFI**

KCF BENNETT Y504
 KCF BENNETT D922
 KCF MISS TRUSTMARK W646

JJNR MR MARBLE TENDER B16G
 SKF DUNN'S MISS JANIE 1J56
 SKF DUNN'S MISS WATCHMAN 603D

REG #:	1572665
BD:	1/13/2023
BW:	76
WW:	611

CE	BW	WW	YW	MK	TM	CEM	ST	DOC	CW	REA	MB	\$C	FPI	EPI
18	-4.2	56	91	25	52	9	16	13	41	.51	.60	110.62	84.55	94.85
BREED PERCENTILE RANKING PER EPD														
5	3	>95	95	30	85	15	30	25	35	55	10	40	35	70
Breed %	50GV 50AN		OWNER:		Sandy Knoll Farm									



Balancer Homo Black Homo Polled **439**
IAND **Dunn's Trusty Lifeline 005L** **RFI**

KCF BENNETT Y504
 KCF BENNETT D922
 KCF MISS TRUSTMARK W646

CRAN CRANVIEW LIFELINE G38 ET
 IAND DUNNS MISS JADEN 151J
 IAND DUNNS MISS GIRLFRIEND 907G

REG #:	1572669
BD:	1/15/2023
BW:	78
WW:	632

CE	BW	WW	YW	MK	TM	CEM	ST	DOC	CW	REA	MB	\$C	FPI	EPI
13	-2.0	74	124	23	60	7	12	12	51	1.00	.35	96.62	86.35	134.34
BREED PERCENTILE RANKING PER EPD														
50	20	40	25	50	45	45	85	50	10	1	50	75	30	30
Breed %	50GV 50AN		OWNER:		Sandy Knoll Farm									

Balancer Homo Black Polled **442**
PRD **Dunn's Civil Alliance 020L** **RFI**

SCHIEFELBEIN ALLIED 514
 SKF DUNNS ALLIED JACKPOT 111H
 SKF DUNNS EXCLUSIVE JACKPOT 860F ET

JKGF CIVIL WAR E92
 EGL FARAH H059
 EGL FARAH C099 ET

REG #:	1572685
BD:	1/26/2023
BW:	73
WW:	712

CE	BW	WW	YW	MK	TM	CEM	ST	DOC	CW	REA	MB	\$C	FPI	EPI
18	-1.4	72	113	26	62	10	12	14	50	.87	.59	98.07	90.87	166.96
BREED PERCENTILE RANKING PER EPD														
5	30	50	45	25	35	10	85	10	15	4	10	70	15	10
Breed %	50GV 50AN		OWNER:		Sandy Knoll Farm									

Balancer Homo Black Homo Polled **440**
SKF **Dunn's Allied Justice 016L** **RFI**

JKGF CHIEF JUSTICE C205
 OGSF OVER FOR JUSTICE 217F
 WHITE ROCK PRIDE U 217

SKF DUNNS ALLIED 032E
 SKF DUNNS MISS ALLIED 196J
 SKF DUNNS MISS HOLE IN ONE 944G ET

REG #:	1572681
BD:	1/19/2023
BW:	85
WW:	659

CE	BW	WW	YW	MK	TM	CEM	ST	DOC	CW	REA	MB	\$C	FPI	EPI
15	-0.4	78	118	27	65	10	17	12	35	.21	.33	121.74	84.97	124.17
BREED PERCENTILE RANKING PER EPD														
25	50	25	35	15	20	10	20	50	55	95	55	20	35	40
Breed %	46GV 54AN		OWNER:		Sandy Knoll Farm									

Balancer Homo Black Homo Polled **443**
SKF **Dunn's Enhanced Burn 029L** **RFI**

SYDGEN ENHANCE
 MSHP SMOKEYS ENHANCE 162H
 MSHP DESTINATION 162E

BRNS SKF BURNS DOUBLETIME 1657D
 SKF DUNNS MISS GEMMA 9G22
 SKF DUNNS MISS WATCHMAN 390A

REG #:	1572694
BD:	1/28/2023
BW:	75
WW:	675

CE	BW	WW	YW	MK	TM	CEM	ST	DOC	CW	REA	MB	\$C	FPI	EPI
14	-1.8	69	113	25	61	6	18	12	30	.44	.65	131.53	89.47	123.70
BREED PERCENTILE RANKING PER EPD														
35	25	65	45	30	40	65	10	50	70	65	5	10	15	40
Breed %	50GV 50AN		OWNER:		Sandy Knoll Farm									

Balancer Black Homo Polled **441**
SKF **Dunn's Top Paygrade 017L** **RFI**

BBDM BOLTON PAY DAY 45C
 JOB DANELL PAYGRADE 68E
 JOB DANELL SAL 9C

LEACHMAN TL BOTTOM LINE
 SKF DUNNS MISS BOTTOMLINE 150J
 SKF DUNNS MISS BLACK SANDY 6D11

REG #:	1572680
BD:	1/20/2023
BW:	83
WW:	628

CE	BW	WW	YW	MK	TM	CEM	ST	DOC	CW	REA	MB	\$C	FPI	EPI
13	-0.8	74	118	27	62	7	14	9	32	.45	.30		82.07	
BREED PERCENTILE RANKING PER EPD														
50	40	40	35	15	35	45	60	95	65	65	65		50	
Breed %	47GV 53AN		OWNER:		Sandy Knoll Farm									

Balancer Homo Black Homo Polled **444**
SKF **Dunn's Level Treasure 042L** **RFI**

MGR TREASURE
 TAU MR TREASURE 221J
 TAU MS DIMAGGIO 7144E

SKF DUNNS 2ND NEW LEVEL 071D ET
 SKF DUNNS MISS B29 HARDWARE 919G
 SKF DUNNS MISS HARDWARE 637D

REG #:	1572707
BD:	1/30/2023
BW:	68
WW:	666

CE	BW	WW	YW	MK	TM	CEM	ST	DOC	CW	REA	MB	\$C	FPI	EPI
22	-4.4	53	82	23	51	14	20	9	14	-.01	.48		79.29	
BREED PERCENTILE RANKING PER EPD														
1	3	>95	>95	50	90	1	3	95	>95	>95	25		65	
Breed %	50GV 45AN 5AR		OWNER:		Sandy Knoll Farm									

BALANCER BULLS

Balancer Homo Black Homo Polled **445**
IAND Dunn's Celtic Fox 051L **RFI**

G A R ASHLAND
 HPCA VERCINGETORIX
 H P C A SURE FIRE P245

SKF DUNNS DEPARTURE 052D
 PRD DUNNS MISS DEPARTURE 0H42
 SKF DUNNS MISS JACKPOT 572C

REG #:	1572714
BD:	2/1/2023
BW:	80
WW:	625

CE	BW	WW	YW	MK	TM	CEM	ST	DOC	CW	REA	MB	\$C	FPI	EPI
15	-1.9	79	132	28	67	9	13	14	33	.65	.75	101.15	99.31	178.54
BREED PERCENTILE RANKING PER EPD														
25	20	20	15	10	15	75	10	60	25	2	65	2	5	
Breed %	50GV 50AN		OWNER:		Sandy Knoll Farm									

Balancer Black Homo Polled **448**
LSR Flint Hills 41L **RFI**

CASINO BOMBER N33
 K C F BENNETT EXPONENTIAL
 K C F MISS SOUTHSIDE

LJC MISSION STATEMENT P27
 LSR MISS STATEMENT 48D
 BBGV FREEDOMS PRIDE 417P ET

REG #:	1577576
BD:	2/10/2023
BW:	89
WW:	568

CE	BW	WW	YW	MK	TM	CEM	ST	DOC	CW	REA	MB	\$C	FPI	EPI
12	0.6	77	124	20	59	6	10	14	55	.50	.69		91.27	
BREED PERCENTILE RANKING PER EPD														
65	75	30	25	75	50	65	>95	10	5	55	4		10	
Breed %	25GV 50AN 25AR		OWNER:		Flint Hills Gelbvieh									

Balancer Homo Black Homo Polled **446**
SKF Dunn's Allied Optimus 057L **RFI**

SCHIEFELBEIN ALLIED 514
 SKF DUNN'S ALLIED JACKPOT 111H
 SKF DUNNS EXCLUSIVE JACKPOT 860F ET

SKF DUNN OPTIMUS 031B
 SKF DUNNS MISS OPTIMUS 925G
 SKF DUNNS MISS HARDWARE 642D

REG #:	1572719
BD:	2/3/2023
BW:	82
WW:	798

CE	BW	WW	YW	MK	TM	CEM	ST	DOC	CW	REA	MB	\$C	FPI	EPI
16	-0.3	82	124	28	69	9	10	17	50	.36	.88	94.40	100.92	149.43
BREED PERCENTILE RANKING PER EPD														
15	55	15	25	10	10	15	>95	1	15	80	1	80	1	20
Breed %	50GV 47AN 3AR		OWNER:		Sandy Knoll Farm									

Balancer Homo Black Polled **449**
LSR Flint Hills 44L **RFI**

CASINO BOMBER N33
 K C F BENNETT EXPONENTIAL
 K C F MISS SOUTHSIDE

RLS REGULAR STANDARD 322A ET
 LSR 49F
 LSR WILLA FORTUNE 45B

REG #:	1577579
BD:	2/18/2023
BW:	90
WW:	657

CE	BW	WW	YW	MK	TM	CEM	ST	DOC	CW	REA	MB	\$C	FPI	EPI
13	-1.8	77	121	28	66	5	14	10	57	.72	.63		93.32	
BREED PERCENTILE RANKING PER EPD														
50	25	30	30	10	15	80	60	90	4	15	10		10	
Breed %	27GV 70AN 3AR		OWNER:		Flint Hills Gelbvieh									

Balancer Homo Black Homo Polled **447**
CCFM 346L **RFI**

TMGC SB FORMULA 12E
 TMGC SB DCN REVOLUTION 287G
 TMGC 213X

K C F BENNETT EXPONENTIAL
 DBRG MS EXPONENTIAL 1362J ET
 DBRG MS TWISTER 8167F ET

REG #:	1582727
BD:	2/6/2023
BW:	75
WW:	714

CE	BW	WW	YW	MK	TM	CEM	ST	DOC	CW	REA	MB	\$C	FPI	EPI
16	-1.6	79	120	24	63	8	18	13	36	.80	.57		94.25	
BREED PERCENTILE RANKING PER EPD														
15	25	20	30	40	30	30	10	25	50	10	15		10	
Breed %	70GV 30AN		OWNER:		Chapuis Cattle Farm									

Balancer Homo Black Polled **450**
SKF Dunn's Allied Overtime 126L **RFI**

SCHIEFELBEIN ALLIED 514
 SKF DUNN'S ALLIED JACKPOT 111H
 SKF DUNNS EXCLUSIVE JACKPOT 860F ET

BNG OVERTIME 23Y
 SKF DUNNS MISS OVERTIME 780E
 SKF DUNNS MS IN FOCUS 205Z

REG #:	1572785
BD:	2/24/2023
BW:	86
WW:	622

CE	BW	WW	YW	MK	TM	CEM	ST	DOC	CW	REA	MB	\$C	FPI	EPI
16	-0.5	72	116	27	64	8	17	13	44	.76	.61	125.31	89.57	170.47
BREED PERCENTILE RANKING PER EPD														
15	50	50	40	15	25	30	20	25	25	10	10	15	15	10
Breed %	50GV 50AN		OWNER:		Sandy Knoll Farm									



Balancer Black Homo Polled **451**
SKF Dunn's Mr Payweight 120L **RFI**

BASIN PAYWEIGHT 1682
 JKGF PAYWEIGHT G63 ET
 JKGF BELLA C155

LEACHMAN SHIFT G026Y
 SKF DUNN'S MISS SHIFT 557C
 SKF DUNNS MS GRANITE 210Z

REG #:	1572779
BD:	2/25/2023
BW:	72
WW:	641

CE	BW	WW	YW	MK	TM	CEM	ST	DOC	CW	REA	MB	\$C	FPI	EPI
14	-2.6	62	94	27	58	6	17	12	33	.45	.61	127.40	84.83	108.66
BREED PERCENTILE RANKING PER EPD														
35	15	90	90	15	60	65	20	50	60	65	10	15	35	55
Breed %	50GV 50AN		OWNER:		Sandy Knoll Farm									

BALANCER BULLS

Balancer Homo Black Homo Polled **452**
SKF **Dunn's Magnitude 135L** **RFI**

MEAD MAGNITUDE
 MLM MEYER'S MAGNITUDE 072H
 VVGR MISS 820U

TMMW MR YERINGTON 84B
 SKF DUNNS MISS YERINGTON 982G
 SKF DUNNS MISS WHARTON 2Z39

REG #:	1572794
BD:	2/28/2023
BW:	84
WW:	758

CE	BW	WW	YW	MK	TM	CEM	ST	DOC	CW	REA	MB	\$C	FPI	EPI
18	-0.9	73	108	23	61	12	15	11	38	.61	.77	118.21	94.44	125.10
BREED PERCENTILE RANKING PER EPD														
5	40	45	60	50	40	1	45	70	45	30	2	25	5	40
Breed %		53GV 47AN			OWNER:		Sandy Knoll Farm							

Balancer Homo Black Homo Polled **456**
SKF **Dunn's Marble Jackpot 183L** **RFI**

SCHIEFELBEIN ALLIED 514
 SKF DUNN'S ALLIED JACKPOT 111H
 SKF DUNNS EXCLUSIVE JACKPOT 860F ET

WMF BLACK MARBLE TENDER 006X
 SKF DUNNS MISS MARBLE TENDER 003H
 SKF DUNNS MISS OPTIMUS 806F

REG #:	1572841
BD:	3/11/2023
BW:	65
WW:	727

CE	BW	WW	YW	MK	TM	CEM	ST	DOC	CW	REA	MB	\$C	FPI	EPI
21	-5.0	61	96	25	56	11	16	12	33	.38	.65	123.05	90.23	125.29
BREED PERCENTILE RANKING PER EPD														
1	2	90	85	30	70	3	30	50	60	80	5	20	15	40
Breed %		50GV 50AN			OWNER:		Sandy Knoll Farm							

Balancer Homo Black Homo Polled **453**
SKF **Dunn's Cash Magnitude 136L** **RFI**

MEAD MAGNITUDE
 MLM MEYER'S MAGNITUDE 072H
 VVGR MISS 820U

JJNR READY CASH B52C
 SKF DUNN'S MISS READYWARE 952G
 SKF DUNNS MS LETHAL HARDWARE

REG #:	1572795
BD:	2/28/2023
BW:	84
WW:	778

CE	BW	WW	YW	MK	TM	CEM	ST	DOC	CW	REA	MB	\$C	FPI	EPI
13	-0.7	78	122	25	66	8	15	11	42	.67	.56	115.74	90.86	128.92
BREED PERCENTILE RANKING PER EPD														
50	45	25	25	30	15	30	45	70	30	20	15	30	15	35
Breed %		50GV 50AN			OWNER:		Sandy Knoll Farm							

Balancer Homo Black Homo Polled **457**
SKF **Dunn's Marble Allied 232L** **RFI**

SCHIEFELBEIN ALLIED 514
 SKF DUNN'S ALLIED JACKPOT 111H
 SKF DUNNS EXCLUSIVE JACKPOT 860F ET

WMF BLACK MARBLE TENDER 006X
 SKF DUNNS MISS MARBLE SAND 025H
 SKF DUNNS MISS BLACK SANDY 6D28

REG #:	1572883
BD:	3/15/2023
BW:	74
WW:	754

CE	BW	WW	YW	MK	TM	CEM	ST	DOC	CW	REA	MB	\$C	FPI	EPI
16	-1.9	67	107	25	59	9	19	13	23	.19	.72	137.27	90.77	138.53
BREED PERCENTILE RANKING PER EPD														
15	20	70	60	30	50	15	5	25	90	>95	3	5	15	25
Breed %		50GV 50AN			OWNER:		Sandy Knoll Farm							

Balancer Homo Black Homo Polled **454**
SKF **Dunn's Sandy Bottom 151L** **RFI**

LEACHMAN TL BOTTOMLINE
 SKF DUNNS BOTTOM LINE 099J
 SKF DUNNS MISS JACKPOT 682D

SKF DUNN OPTIMUS 031B
 SKF DUNNS MISS OPTIMUS 032H
 SKF DUNNS MS ABSOLUTE JACKPOT

REG #:	1572810
BD:	3/1/2023
BW:	70
WW:	702

CE	BW	WW	YW	MK	TM	CEM	ST	DOC	CW	REA	MB	\$C	FPI	EPI
14	-1.7	75	115	26	61	9	14	14	29	.06	.60	111.88	90.85	105.62
BREED PERCENTILE RANKING PER EPD														
35	25	35	40	25	40	15	60	10	75	>95	10	40	15	60
Breed %		50GV 50AN			OWNER:		Sandy Knoll Farm							

Balancer Homo Black Homo Polled **458**
SKF **Dunn's Allied Focus 166L** **RFI**

SCHIEFELBEIN ALLIED 514
 SKF DUNN'S ALLIED JACKPOT 111H
 SKF DUNNS EXCLUSIVE JACKPOT 860F ET

VRT LAZY TV WATCHMAN W021
 SKF DUNNS MISS WATCHMAN 516C
 SKF DUNNS MS SPECIAL FOCUS 394A

REG #:	1572824
BD:	3/16/2023
BW:	75
WW:	744

CE	BW	WW	YW	MK	TM	CEM	ST	DOC	CW	REA	MB	\$C	FPI	EPI
16	-0.6	69	109	27	62	8	13	12	36	.31	.89	101.06	94.11	139.29
BREED PERCENTILE RANKING PER EPD														
15	45	65	55	15	35	30	75	50	50	90	1	65	10	25
Breed %		50GV 50AN			OWNER:		Sandy Knoll Farm							

Balancer Homo Black Homo Polled **455**
SKF **Dunn's Allied Diamond 180L** **RFI**

SCHIEFELBEIN ALLIED 514
 SKF DUNN'S ALLIED JACKPOT 111H
 SKF DUNNS EXCLUSIVE JACKPOT 860F ET

DLW DIAMOND ET
 SKF DUNN'S MS BLACK DIAMOND F800
 SKF DUNNS MISS BLACK SANDY 629D

REG #:	1572838
BD:	3/11/2023
BW:	70
WW:	696

CE	BW	WW	YW	MK	TM	CEM	ST	DOC	CW	REA	MB	\$C	FPI	EPI
21	-3.9	54	83	27	55	11	13	15	27	.27	.70	99.45	85.15	118.68
BREED PERCENTILE RANKING PER EPD														
1	4	>95	>95	15	75	3	75	4	80	95	3	70	35	45
Breed %		50GV 48AN 2AR			OWNER:		Sandy Knoll Farm							

Balancer Homo Black Homo Polled **459**
SKF **Dunn's Fast Track 185L** **RFI**

SCHIEFELBEIN ALLIED 514
 SKF DUNN'S ALLIED JACKPOT 111H
 SKF DUNNS EXCLUSIVE JACKPOT 860F ET

SKF DUNN OPTIMUS 031B
 PRD DUNN'S MS FAST TRACK 869F
 PRD DUNNS MS BRILLIANCE 441B

REG #:	1572843
BD:	3/16/2023
BW:	69
WW:	758

CE	BW	WW	YW	MK	TM	CEM	ST	DOC	CW	REA	MB	\$C	FPI	EPI
21	-3.4	69	109	30	65	13	15	15	36	.21	.91	117.14	99.35	119.12
BREED PERCENTILE RANKING PER EPD														
1	10	65	55	4	20	1	45	4	50	95	1	30	2	45
Breed %		50GV 50AN			OWNER:		Sandy Knoll Farm							

76% Gelbvieh Homo Black Homo Polled **460**
JGPG Franchise 2207K

WWG C28
 MJBC FRANCHISE F806
 ABCS 026C

DLW WARNER 0152C
 JGPG EMMA 866F 0228H
 JGPG EMMA 866F

REG #:	1564712
BD:	9/9/2022
BW:	60
WW:	571

CE	BW	WW	YW	MK	TM	CEM	ST	DOC	CW	REA	MB	\$C	FPI	EPI
13	1.4	74	118	27	64	6	13	13	48	.76	.33	86.91	81.03	112.92
BREED PERCENTILE RANKING PER EPD														
45	85	35	30	15	20	60	75	25	10	20	45	90	45	40
Breed %		76GV 24AN			OWNER:		JGP Gelbvieh							

81% Gelbvieh Homo Black Homo Polled **464**
VJQM VV's High Times 59K

DCH HILLE Y109
 DCH HILLE F124
 DCH HILLE D522

JEB DR BLACK BENTLEY 211B
 DRGF 845F
 JEB DR MISS BALANCE 203B

RFI

REG #:	1575771
BD:	11/23/2022
BW:	73
WW:	567

CE	BW	WW	YW	MK	TM	CEM	ST	DOC	CW	REA	MB	\$C	FPI	EPI
17	-0.8	80	122	24	64	10	20	10	39	.38	.17	133.87	83.35	113.47
BREED PERCENTILE RANKING PER EPD														
10	40	15	20	40	20	5	3	85	30	85	80	10	30	35
Breed %		81GV 19AN			OWNER:		Double V Farms							

76% Gelbvieh Black Homo Polled **461**
CCFM 92K

TMGC SB FORMULA 12E
 TMGC SB DCN REVOLUTION 287G
 TMGC 213X

MCJ RJ VISION 809W
 CCFM 303A
 CCFM 110Y

REG #:	1571565
BD:	11/1/2022
BW:	86
WW:	635

CE	BW	WW	YW	MK	TM	CEM	ST	DOC	CW	REA	MB	\$C	FPI	EPI
16	-0.3	67	103	22	55	9	17	14	27	.60	.69	117.47	87.54	119.10
BREED PERCENTILE RANKING PER EPD														
15	50	65	65	60	70	15	20	10	70	45	3	35	20	30
Breed %		76GV 12AN 12XX			OWNER:		Chapuis Cattle Farm							

77% Gelbvieh Homo Black Homo Polled **462**
JJNR Mr Franchise B20K

WWG C28
 MJBC FRANCHISE F806
 ABCS 026C

ERTL BARGAINING CHIP D677
 JJNR MISS CHIP 69AH
 JJNR MISS GOOD NIGHT 69YA

RFI

REG #:	1576053
BD:	9/30/2022
BW:	71
WW:	540

CE	BW	WW	YW	MK	TM	CEM	ST	DOC	CW	REA	MB	\$C	FPI	EPI
11	-2.1	67	105	23	56	5	14	9	29	.44	.41	92.88	81.46	118.57
BREED PERCENTILE RANKING PER EPD														
75	15	65	60	50	65	75	60	95	60	75	30	85	40	35
Breed %		77GV 23AN			OWNER:		Nelson Ranch							

77% Gelbvieh Homo Black Homo Polled **463**
TMGC SB Barcelona 215K

CCRO CAROLINA LEVERAGE 3214A
 TMGC SB FORMULA 12E
 TMGC SB DANIELLE 07C

SKF DUNN OPTIMUS 031B
 TMGC SB OPAL 163F
 TMGC SB SUE OF CPR 61R 174D ET

REG #:	1564457
BD:	10/10/2022
BW:	82
WW:	646

CE	BW	WW	YW	MK	TM	CEM	ST	DOC	CW	REA	MB	\$C	FPI	EPI
14	1.1	89	127	28	72	9	14	16	48	.92	.51	113.34	94.57	130.28
BREED PERCENTILE RANKING PER EPD														
35	80	3	15	10	3	15	60	2	10	4	15	45	4	25
Breed %		77GV 23AN			OWNER:		Stuecken Bros							

Keep Your Mind in the Market

Volatile commodity markets and the speed at which narrow windows of opportunity to manage risk open and close underscore the value of keeping your mind engaged in the market, no matter how frequently you trade cattle.

That's why Seedstock Plus continues to offer as a free service to its customers and members a complimentary subscription to the daily Cattle Current electronic newsletter. It offers a convenient snapshot of the previous day's cash and futures markets for calves, feeders, fed cattle and related commodities. You'll also find pertinent market-related news.

If you're not receiving Cattle Current, or if you'd like to receive it at more than one e-mail address, please let us know and we'll add you to the list. You can send your request to wes@cattlecurrent.com.



About Gelbvieh Bulls

Each of the Gelbvieh bulls is listed separately in the catalog with their own individual performance and pedigree information. They are all registered with the American Gelbvieh Association. The EPD's are the most current provided by the Gelbvieh Assoc.

The Average EPD's for Gelbvieh bulls as of 2/6/24:
 CE:13 BW: 0.1 WW: 70 YW: 103 MK: 23 TM: 58
 CEM: 6 ST: 16 DOC: 12 CW: 27 REA: 0.67
 MB: 0.20 \$C: 114.54 FPI: 75.98 EPI: 81.32

PB Gelbvieh Homo Black Homo Polled **468**

KZC K105

SPFR 204Z
 KZC E71
 ABF 2207Z

KCF BENNETT U271
 SLMG 159C ET
 CCRO CCROSS PERFORMER 2301Z ET

REG #:	1576938
BD:	11/21/2022
BW:	72
WW:	610

CE	BW	WW	YW	MK	TM	CEM	ST	DOC	CW	REA	MB	\$C	FPI	EPI	
12	1.9	76	111	22	60	6	9	12	48	1.12	.08	72.02	74.86	123.94	
BREED PERCENTILE RANKING PER EPD															
55	90	25	30	60	35	50	>95	45	2	1	80	>95	60	10	
Breed %		88GV 12AN			OWNER:					KZ Cattle Company					

PB Gelbvieh Homo Black Homo Polled **465**

DRGF 216K

GMF FORTUNE 616D
 HRZN G213
 HRZN D337

DMP D610
 JEB BCC DR MS BALANCE 201F
 JDKG MS DESIGN BALANCER 933U

REG #:	1571971
BD:	8/28/2022
BW:	72
WW:	624

CE	BW	WW	YW	MK	TM	CEM	ST	DOC	CW	REA	MB	\$C	FPI	EPI	
15	0.2	75	113	22	59	9	11	12	40	.61	.19	85.80	79.55	94.59	
BREED PERCENTILE RANKING PER EPD															
20	55	25	25	60	40	10	95	45	10	65	50	95	30	35	
Breed %		88GV 12AN			OWNER:					Duck River Gelbvieh					

PB Gelbvieh Black Homo Polled **469**

KZC K107

SPFR 204Z
 KZC E71
 ABF 2207Z

KCF BENNETT U271
 SLMG 156C ET
 CCRO CCROSS PERFORMER 2301Z ET

REG #:	1576937
BD:	11/30/2022
BW:	79
WW:	577

CE	BW	WW	YW	MK	TM	CEM	ST	DOC	CW	REA	MB	\$C	FPI	EPI	
11	0.6	71	108	22	58	5	10	12	33	.93	.19	81.67	76.27	121.40	
BREED PERCENTILE RANKING PER EPD															
70	65	45	35	60	50	70	>95	45	25	10	50	>95	50	10	
Breed %		88GV 12AN			OWNER:					KZ Cattle Company					

PB Gelbvieh Homo Black Homo Polled **466**

LAW Peter Gunn 240K

TMGC SB GOOD BUSINESS 143B
 SKF DUNNS REGULAR BUSINESS 149F
 SKF DUNNS MISS GOVENOR 136Y

DBRG PERISCOPE 373A
 DLW MS PERISCOPE 377C
 DLW MS BELLE 377A

REG #:	1551008
BD:	9/24/2022
BW:	58
WW:	528

CE	BW	WW	YW	MK	TM	CEM	ST	DOC	CW	REA	MB	\$C	FPI	EPI	
18	-4.0	53	75	20	46	11	18	12	4	-.01	.47	128.82	77.33	31.86	
BREED PERCENTILE RANKING PER EPD															
3	1	>95	>95	75	>95	1	20	45	>95	>95	3	25	45	>95	
Breed %		88GV 12AN			OWNER:					Lawman Farms					

PB Gelbvieh Homo Black Homo Polled **470**

SKF Dunn's Napoleon 009L

BBDM BOLTON PAY DAY 45C
 JOB DANELL NAPOLEON 01E
 JOB DANELL JOSEPHINE 33C

GSRT DEACON 908D
 SKF DUNNS MISS DEACON 142J
 SKF DUNNS MISS DESTINATION 848F

REG #:	1572673
BD:	1/16/2023
BW:	73
WW:	647

CE	BW	WW	YW	MK	TM	CEM	ST	DOC	CW	REA	MB	\$C	FPI	EPI	
17	-3.4	69	98	27	61	10	16	10	24	.70	.08	121.64	78.04	58.75	
BREED PERCENTILE RANKING PER EPD															
5	2	55	65	15	30	3	45	85	65	45	80	40	40	80	
Breed %		94GV 6AN			OWNER:					Sandy Knoll Farm					

PB Gelbvieh Homo Black Homo Polled **467**

DJZ 2K26

WWG C28
 MJBC FRANCHISE F806
 ABCS 026C

TMMW HOLE IN ONE 93D
 DJZ 110G
 GMP B18

REG #:	1584148
BD:	11/2/2022
BW:	65
WW:	663

CE	BW	WW	YW	MK	TM	CEM	ST	DOC	CW	REA	MB	\$C	FPI	EPI	
16	-0.6	74	109	28	65	8	15	13	23	.56	.36	107.40	85.22	122.12	
BREED PERCENTILE RANKING PER EPD															
10	35	30	35	10	15	15	60	25	70	75	15	70	10	10	
Breed %		99.9GV			OWNER:					Zimmerman Gelbvieh					

PB Gelbvieh Homo Black Homo Polled **471**

SKF Dunns' Black Diamond 013L

CCRO CAROLINA LEVERAGE 3214A
 DMI BLACK DIAMOND 88F ET
 DMI 723T

JOB DANELL NAPOLEON 01E
 SKF DUNN'S MISS NAPOLEON 122J
 SKF DUNNS MISS TWISTERTIME 961G

REG #:	1572677
BD:	1/18/2023
BW:	66
WW:	623

CE	BW	WW	YW	MK	TM	CEM	ST	DOC	CW	REA	MB	\$C	FPI	EPI	
17	-0.9	78	105	28	67	9	14	9	14	.79	.47	110.46	90.70	73.15	
BREED PERCENTILE RANKING PER EPD															
5	25	20	45	10	10	10	75	95	95	25	3	65	1	65	
Breed %		99.9GV			OWNER:					Sandy Knoll Farm					

GELBVIEH BULLS

PB Gelbvieh Black

Homo Polled **472**

DRGF 303L

DDGR RESILIENT 275D
GMF 034H
GMF MENG 57C

SKF DUNNS HEAVY CRUSADE
DRGF 102J
CABL CABLE RIDGE WILMA G7

RFI

REG #:	1583785
BD:	1/25/2023
BW:	68
WW:	663

CE	BW	WW	YW	MK	TM	CEM	ST	DOC	CW	REA	MB	\$C	FPI	EPI
12	0.0	78	120	29	68	6	20	17	21	.99	.23	138.87	83.42	113.80
BREED PERCENTILE RANKING PER EPD														
55	50	20	15	5	50	4	1	75	4	40	10	15	15	
Breed %		94GV 6AR			OWNER:		Duck River Gelbvieh							

PB Gelbvieh Homo Black Homo Polled

475

IAND Dunn's Sharp Option 047L

DCH HILLE D453
GLM HASHTAG# H11
GLM W55

DCH HILLE STOCK OPTIONS D410
IAND DUNNS MISS STOCK OPTION 020H
SKF DUNNS MISS FELICIA 8F04

REG #:	1572712
BD:	2/1/2023
BW:	81
WW:	776

CE	BW	WW	YW	MK	TM	CEM	ST	DOC	CW	REA	MB	\$C	FPI	EPI
13	0.7	86	128	29	72	7	22	14	43	.93	.14	155.87	84.10	148.26
BREED PERCENTILE RANKING PER EPD														
40	65	3	5	5	2	30	1	10	10	65	2	10	3	
Breed %		99.9GV			OWNER:		Sandy Knoll Farm							

PB Gelbvieh Homo Black Homo Polled **473**

SKF Dunn's Providence 028L

TMMW DESTINATION 82Y
SKF DUNNS DESTINY 056F
SKF DUNNS MS GOVENORESS 5C28

TMGC SB GOOD BUSINESS 143B
SKF DUNNS MISS GENNIFER 9G85
SKF DUNNS MISS SHOGUN 244Z

RFI

REG #:	1572693
BD:	1/28/2023
BW:	84
WW:	744

CE	BW	WW	YW	MK	TM	CEM	ST	DOC	CW	REA	MB	\$C	FPI	EPI
14	-0.1	71	109	23	58	8	16	16	27	.94	.45	135.55	84.47	141.94
BREED PERCENTILE RANKING PER EPD														
30	45	45	35	50	50	15	45	2	50	10	4	15	10	4
Breed %		99.9GV			OWNER:		Sandy Knoll Farm							

PB Gelbvieh Homo Black Homo Polled **476**

SKF Dunn's Black Onyx 048L ET

CCRO CAROLINA LEVERAGE 3214A
DMI BLACK DIAMOND 88F ET
DMI 723T

TMMW DESTINATION 82Y
SKF DUNNS MISS FLORENTINE 873F
SKF DUNNS MISS JACKPOT 569C

RFI

REG #:	1574159
BD:	2/2/2023
BW:	ET
WW:	ET

CE	BW	WW	YW	MK	TM	CEM	ST	DOC	CW	REA	MB	\$C	FPI	EPI
14	0.2	80	124	26	66	9	17	11	24	.78	.38	128.80	87.68	120.77
BREED PERCENTILE RANKING PER EPD														
30	55	15	10	20	10	10	30	65	65	25	10	25	4	10
Breed %		99.9GV			OWNER:		Sandy Knoll Farm							

PB Gelbvieh Homo Black Homo Polled **474**

SKF Dunn's Revolution 031L

TMGC SB FORMULA 12E
TMGC SB DCN REVOLUTION 287G
TMGC 213X

SKF DUNNS DEPARTURE 052D
SKF DUNNS MISS DEPARTURE 036H
SKF DUNNS MISS BUSINESS JACKPOT

RFI

REG #:	1572696
BD:	1/31/2023
BW:	66
WW:	642

CE	BW	WW	YW	MK	TM	CEM	ST	DOC	CW	REA	MB	\$C	FPI	EPI
17	-2.3	71	112	22	57	9	21	14	21	.55	.44	156.90	87.39	148.59
BREED PERCENTILE RANKING PER EPD														
5	10	45	30	60	55	10	2	10	75	75	5	2	4	3
Breed %		95GV 5AN			OWNER:		Sandy Knoll Farm							

PB Gelbvieh Black Homo Polled **477**

SKF Dunn's Big Destiny 056L ET

TMMW DESTINATION 82Y
SKF DUNNS DESTINY 056F
SKF DUNNS MS GOVENORESS 5C28

FHG FLYING H EXCLUSIVE
SKF DUNNS MISS EXCLUSIVE 756E ET
SKF DUNNS MISS SANDY 166Y

REG #:	1574156
BD:	2/3/2023
BW:	ET
WW:	ET

CE	BW	WW	YW	MK	TM	CEM	ST	DOC	CW	REA	MB	\$C	FPI	EPI
11	-0.1	72	108	20	56	8	15	15	28	.63	.64	123.03	87.72	143.35
BREED PERCENTILE RANKING PER EPD														
70	45	40	35	75	60	15	60	4	45	60	1	35	4	3
Breed %		94GV 6AN			OWNER:		Sandy Knoll Farm							



PB Gelbvieh Homo Black Homo Polled **478**

SKF Dunn's Double Bogey 073L

TMMW DESTINATION 82Y
SKF DUNNS DESTINY 056F
SKF DUNNS MS GOVENORESS 5C28

TMMW HOLE IN ONE 93D
SKF DUNNS MISS SAND TRAP 075H ET
SKF DUNNS MISS SANDY 166Y

REG #:	1572734
BD:	2/8/2023
BW:	89
WW:	747

CE	BW	WW	YW	MK	TM	CEM	ST	DOC	CW	REA	MB	\$C	FPI	EPI
9	0.3	72	110	29	64	6	12	10	16	.53	.49	108.47	84.14	162.45
BREED PERCENTILE RANKING PER EPD														
90	55	40	30	5	20	50	90	85	90	80	3	65	10	1
Breed %		91GV 9AN			OWNER:		Sandy Knoll Farm							

GELBVIEW BULLS

PB Gelbvieh Homo Black Polled
LSR Flint Hills 46L

479

RFI

VRT LAZY TV SAM U451
 BVC 52E ET
 GDW BLACK COCOA SUE
 RLS SHERMANS OBJECTIVE 313Y
 LSR MISS 44C
 SEAJ VALERIE

REG #:	1577581
BD:	2/16/2023
BW:	85
WW:	584



CE	BW	WW	YW	MK	TM	CEM	ST	DOC	CW	REA	MB	\$C	FPI	EPI
10	2.5	81	122	20	61	6	9	11	28	.72	.35	75.23	83.09	137.73
BREED PERCENTILE RANKING PER EPD														
85	95	10	10	75	30	50	>95	65	45	40	15	>95	15	4
Breed %		88GV 12AN			OWNER:		Flint Hills Gelbvieh							

PB Gelbvieh Homo Black Homo Polled
SKF Dunn's Good Options 099L

480

RFI

CCRO CAROLINA LEVERAGE 3214A
 DCH HILLE STOCK OPTIONS D410
 DCH HILLE B189 ET
 TMGC SB GOOD BUSINESS 143B
 SKF DUNNS MISS GOOD SAM 8F05
 SKF DUNNS MISS SAM 350A

REG #:	1572760
BD:	2/17/2023
BW:	82
WW:	648

CE	BW	WW	YW	MK	TM	CEM	ST	DOC	CW	REA	MB	\$C	FPI	EPI
14	-1.8	71	99	27	62	9	23	12	11	1.03	.32	176.54	83.13	95.01
BREED PERCENTILE RANKING PER EPD														
30	15	45	60	15	25	10	1	45	>95	3	20	1	15	35
Breed %		99.9GV			OWNER:		Sandy Knoll Farm							

PB Gelbvieh Homo Black Homo Polled
SKF Dunn's Lazy Leverage 119L

483

RFI

CCRO CAROLINA LEVERAGE 3214A
 WAHL 4H ET
 FHG FLYING H MS LEGACY 48Y
 VRT LAZY TV SAM U451
 SKF DUNNS MISS SAM 815F
 SKF DUNNS MISS BLACK SANDY 6D36

REG #:	1572778
BD:	2/25/2023
BW:	86
WW:	680

CE	BW	WW	YW	MK	TM	CEM	ST	DOC	CW	REA	MB	\$C	FPI	EPI
11	0.4	84	128	26	68	6	16	12	40	.71	.53	126.85	92.41	77.11
BREED PERCENTILE RANKING PER EPD														
70	60	5	5	20	5	50	45	45	10	40	2	25	1	60
Breed %		94GV 6AN			OWNER:		Sandy Knoll Farm							

PB Gelbvieh Black Polled
CCFM 323L

481

RFI

DDGR NAVAHO 188X
 DVE DAVIDSON JACKPOT 74Z
 DVE DAVIDSON MS JIM 61T
 DDM MR SHERMAN TANK
 CCFM 812F
 CCFM 706T

REG #:	1578175
BD:	2/23/2023
BW:	70
WW:	702

CE	BW	WW	YW	MK	TM	CEM	ST	DOC	CW	REA	MB	\$C	FPI	EPI
15	-0.8	65	96	25	57	8	16	10	8	.27	.28	109.12	76.89	117.79
BREED PERCENTILE RANKING PER EPD														
20	30	70	70	30	55	15	45	85	>95	>95	25	65	45	15
Breed %		91GV 9XX			OWNER:		Chapuis Cattle Farm							

PB Gelbvieh Black Homo Polled
SWW L18

484

RFI

VRT LAZY TV SAM U451
 CCRO CAROLINA LEVERAGE 3214A
 CCRO BELLE OF THE BALL 1309Y
 AAD R GIBBS 1311A
 SWW JANELLE 72E30
 SWW JANELLE III 72S114

REG #:	1565407
BD:	2/26/2023
BW:	89
WW:	569

CE	BW	WW	YW	MK	TM	CEM	ST	DOC	CW	REA	MB	\$C	FPI	EPI
12	-0.4	81	123	27	68	8	18	9	28	.93	.34	140.30	88.14	98.75
BREED PERCENTILE RANKING PER EPD														
55	40	10	10	15	5	15	20	95	45	10	15	10	3	30
Breed %		94GV 6AN			OWNER:		Wolf Gelbvieh							

PB Gelbvieh Homo Black Homo Polled
SKF Dunn's Twisted Equity 114L

482

RFI

CCRO CAROLINA LEVERAGE 3214A
 WAHL 4H ET
 FHG FLYING H MS LEGACY 48Y
 DBRG MR TWISTER 7207E ET
 SKF DUNNS MISS SAND TWISTER 0H72
 SKF DUNNS MISS SANDY BUSINESS 7E16

REG #:	1572774
BD:	2/25/2023
BW:	83
WW:	694

CE	BW	WW	YW	MK	TM	CEM	ST	DOC	CW	REA	MB	\$C	FPI	EPI
13	-0.1	78	112	29	67	8	22	11	12	.57	.50	160.42	88.72	79.87
BREED PERCENTILE RANKING PER EPD														
40	45	20	30	5	10	15	1	65	95	70	2	1	3	55
Breed %		94GV 6AN			OWNER:		Sandy Knoll Farm							

PB Gelbvieh Black Homo Polled
CCFM 14L ET

485

TMGC SB FORMULA 12E
 TMGC SB DCN REVOLUTION 287G
 TMGC 213X
 CTR JACKPOT 8660F ET
 CCFM 118J ET
 CCFM 303A

REG #:	1582732
BD:	2/28/2023
BW:	ET
WW:	ET

CE	BW	WW	YW	MK	TM	CEM	ST	DOC	CW	REA	MB	\$C	FPI	EPI
12	-0.8	73	115	23	59	5	16	14	42	.67	.49	112.36	85.85	139.41
BREED PERCENTILE RANKING PER EPD														
55	30	35	20	50	40	70	45	10	10	50	3	60	10	4
Breed %		85GV 9AN 6XX			OWNER:		Chapuis Cattle Farm							

GELBVIEWH BULLS

PB Gelbvieh Homo Black Homo Polled **486**

SKF **Dunn's Level Destiny 133L** **RFI**

CCRO CAROLINA LEVERAGE 3214A
WAHL 4H ET
FHG FLYING H MS LEGACY 48Y

TMMW DESTINATION 82Y
SKF DUNNS MS DESTINATION 858F ET
SKF MISS ENCLUSIVE 301N

REG #:	1572792
BD:	2/28/2023
BW:	86
WW:	770

CE	BW	WW	YW	MK	TM	CEM	ST	DOC	CW	REA	MB	\$C	FPI	EPI
10	1.0	93	146	25	72	7	18	12	53	.83	.37	138.57	92.70	129.67
BREED PERCENTILE RANKING PER EPD														
85	75	1	1	30	2	30	20	45	1	20	10	10	1	10
Breed %		94GV 6AN			OWNER:		Sandy Knoll Farm							

PB Gelbvieh Homo Black Homo Polled **490**

SKF **Dunn's Defiance 170L** **RFI**

TMGC SB FORMULA 12E
TMGC SB DCN REVOLUTION 287G
TMGC 213X

BWF BRANDYWINE ZACK 201Z
BWF BRANDYWINE GODIVA 928G
BWF BRANDYWINE ELVIRA 761E

REG #:	1572828
BD:	3/10/2023
BW:	84
WW:	747

CE	BW	WW	YW	MK	TM	CEM	ST	DOC	CW	REA	MB	\$C	FPI	EPI
13	-0.2	85	130	22	64	7	18	14	44	.64	.48	131.23	92.66	142.94
BREED PERCENTILE RANKING PER EPD														
40	45	4	4	60	20	30	20	10	5	55	3	20	1	3
Breed %		88GV 12AN			OWNER:		Sandy Knoll Farm							

PB Gelbvieh Black Homo Polled **487**

SKF **Dunn's Lazy Luis 145L** **RFI**

CCRO CAROLINA LEVERAGE 3214A
WAHL 4H ET
FHG FLYING H MS LEGACY 48Y

VRT LAZY TV SAM U451
SKF DUNNS MISS SAM 4B65
SKF DUNNS KS FORTUNE 717T ET

REG #:	1572804
BD:	3/2/2023
BW:	86
WW:	734

CE	BW	WW	YW	MK	TM	CEM	ST	DOC	CW	REA	MB	\$C	FPI	EPI
9	3.9	93	136	30	76	6	19	11	32	.90	.46	140.42	92.00	95.69
BREED PERCENTILE RANKING PER EPD														
90	>95	1	2	3	1	50	10	65	30	10	4	10	1	35
Breed %		94GV 6AN			OWNER:		Sandy Knoll Farm							

PB Gelbvieh Black Polled **491**

SKF **Dunn's Good Formula 193L** **RFI**

TMGC SB FORMULA 12E
TMGC SB DCN REVOLUTION 287G
TMGC 213X

TMGC SB GOOD BUSINESS 143B
SKF DUNNS MISS GAYLE 9G33
SKF DUNNS MS XREGULATOR 043X

REG #:	1572851
BD:	3/15/2023
BW:	79
WW:	714

CE	BW	WW	YW	MK	TM	CEM	ST	DOC	CW	REA	MB	\$C	FPI	EPI
16	-3.0	71	105	21	56	9	20	13	17	.37	.58	148.53	90.39	132.56
BREED PERCENTILE RANKING PER EPD														
10	4	45	45	70	60	10	4	25	85	>95	1	4	2	10
Breed %		95GV 5AN			OWNER:		Sandy Knoll Farm							

PB Gelbvieh Black Homo Polled **488**

BVC **Mr Sam 55L** **RFI**

VRT LAZY TV SAM U451
BVC 52E ET
GDW BLACK COCOA SUE

FHG FLYING H MR TRACTION 45B
BVC MS TRACTION 521F ET
RLS KRUGERRAND KAISER 332X

REG #:	1578815
BD:	3/3/2023
BW:	85
WW:	647

CE	BW	WW	YW	MK	TM	CEM	ST	DOC	CW	REA	MB	\$C	FPI	EPI
16	-1.0	63	96	27	59	9	19	12	3	.41	.29	133.05	77.36	84.63
BREED PERCENTILE RANKING PER EPD														
10	25	80	70	15	40	10	10	45	>95	95	25	15	45	50
Breed %		90GV 10AN			OWNER:		Bryce Family Farms LLC							

PB Gelbvieh Homo Black Homo Polled **489**

SKF **Dunn's Mr Leverage 168L**

CCRO CAROLINA LEVERAGE 3214A
WAHL 4H ET
FHG FLYING H MS LEGACY 48Y

SKF DUNNS DEPARTURE 052D
SKF DUNNS MISS DEPARTURE F832
SKF DUNNS MISS BERTHA 4B28

REG #:	1572826
BD:	3/8/2023
BW:	89
WW:	746

CE	BW	WW	YW	MK	TM	CEM	ST	DOC	CW	REA	MB	\$C	FPI	EPI
12	0.9	83	126	24	65	7	22	16	8	.29	.65	161.24	93.63	104.52
BREED PERCENTILE RANKING PER EPD														
55	70	10	10	40	15	30	1	2	>95	>95	1	1	1	25
Breed %		94GV 6AN			OWNER:		Sandy Knoll Farm							



REGISTERED OPEN HEIFERS

Balancer Homo Black Homo Polled **492**
JEB BCC Miss Warner 320L

DCH HILLE X102
 DLW WARNER 0152C
 RR VALENTINE 0152

DLW TPG DEDICATION 7120D ET
 DLW TPG MS DEDICATION 9501G
 CCRO MS PRICELESS 1316Y

REG #:	1583675
BD:	3/1/2023
BW:	60
WW:	499



CE	BW	WW	YW	MK	TM	CEM	ST	DOC	CW	REA	MB	\$C	FPI	EPI
17	-3.7	60	90	28	58	9	20	12	12	.09	.22	125.02	76.09	71.56
BREED PERCENTILE RANKING PER EPD														
10	5	95	10	60	15	3	50	>95	>95	80	15	80	90	
Breed %		69GV 31AN			OWNER:		JGP Gelbvieh / Burbank Cattle							

Clean fronted and attractively made, this fancy Balancer heifer has the calving-ease numbers to make those sought after heifer bulls! Top 10% CE & top 5% BW EPDs!

Balancer Homo Black Homo Polled **493**
MTB BCC Ms Stock Options 323L

CCRO CAROLINA LEVERAGE 3214A
 DCH HILLE STOCK OPTIONS D410
 DCH HILLE B189 ET

SCHIEFELBEIN ALLIED 514
 JEB BCC MISS ALLIED 2E
 TEFG 101B

REG #:	1583676
BD:	3/2/2023
BW:	74
WW:	537



CE	BW	WW	YW	MK	TM	CEM	ST	DOC	CW	REA	MB	\$C	FPI	EPI
15	-1.4	80	123	26	66	9	20	11	37	.68	.63	144.88	96.02	131.15
BREED PERCENTILE RANKING PER EPD														
25	30	20	25	25	15	15	3	70	45	20	10	2	4	30
Breed %		75GV 25AN			OWNER:		JGP Gelbvieh / Burbank Cattle							

Soggy, deep and thick, this 75% Stock Options daughter could be used to make Purebreds or back to Balancer! Excellent spread on a set of numbers that has 11 traits in the top 25%!

Balancer Homo Black Homo Polled **494**
JEB BCC Miss Warner 324L

DCH HILLE X102
 DLW WARNER 0152C
 RR VALENTINE 0152

BNG OVERTIME 23Y
 JEB BCC MS OVERTIME 5G
 JEB BCC MS MATRIX 9X

REG #:	1583677
BD:	3/2/2023
BW:	68
WW:	511



CE	BW	WW	YW	MK	TM	CEM	ST	DOC	CW	REA	MB	\$C	FPI	EPI
13	-0.4	74	109	25	62	6	13	16	46	.55	.15	96.69	77.07	126.19
BREED PERCENTILE RANKING PER EPD														
50	50	40	55	30	35	65	75	2	20	45	95	90	75	35
Breed %		50GV 50AN			OWNER:		JGP Gelbvieh / Burbank Cattle							

The granddam of this heifer, Ms Matrix 9X, is a Dam of Merit and a favorite around Burbank Cattle Company for the exceptional production record and numerous bulls put through the Seedstock Plus sales. This heifer is balanced and correct in her make-up and we would expect her to be in production for many years to come!

REGISTERED OPEN HEIFERS

Balancer Homo Black Homo Polled **495** MART JGPG Blackcap 341L

TMMW DESTINATION 82Y
JEB BCC CALVIN 31C
JEB DR BCC MISS SHOGUN 208Z

JBOB 3303K ET
MART BLACKCAP 531C ET
KAYN BLACKCAP B042

REG #:	1577345
BD:	3/9/2023
BW:	68
WW:	537

CE	BW	WW	YW	MK	TM	CEM	ST	DOC	CW	REA	MB	\$C	FPI	EPI
14	1.1	61	96	21	52	9	13	10	18	.48	.26	92.99	71.19	131.72
BREED PERCENTILE RANKING PER EPD														
35	85	90	85	70	85	15	75	90	95	60	75	80	95	30
Breed %		75GV 25AN				OWNER:		JGP Gelbvieh / Martin Farms						

Extremely functional 75% Balancer heifer here. Tremendous cow power on both sides of her pedigree. Homozygous Black & Homozygous Polled with loads of potential. Breed this girl for Purebreds or Balancers. Either way you won't be disappointed!



Balancer Homo Black Homo Polled **496** MTB BCC Ms Chippie 345L

CCRO CAROLINA LEVERAGE 3214A
ERTL BARGAINING CHIP D677
KCS BLACKBIRD 7707

MTB BCC PEDRO 6A
MTB BCC MS PEDRO 813F ET
MTB BCC MO RED 17P

REG #:	1583681
BD:	3/11/2023
BW:	76
WW:	545

CE	BW	WW	YW	MK	TM	CEM	ST	DOC	CW	REA	MB	\$C	FPI	EPI
7	2.7	75	108	26	63	5	12	10	40	.53	.38	92.17	77.75	138.89
BREED PERCENTILE RANKING PER EPD														
>95	>95	40	60	25	30	80	85	90	35	50	45	85	75	25
Breed %		50GV 41AN 9AR				OWNER:		JGP Gelbvieh / Burbank Cattle						

The maternal line is very strong in this attractively made Balancer heifer! Her granddam, BCC Mo Red 17P, was an excellent donor female for us and has 35 progeny to her credit. Pedro 6A is a full brother to the popular Saguro 8111F ET bull! She'll work in most anybody's program!



Balancer Homo Black Homo Polled **497** JEB BCC Miss Probity 359L

JRI PROBITY 254D28
MART JGPG PROBITY 0217H
MART HALLE 620D

BNG OVERTIME 23Y
JEB BCC MS OVERTIME 907G ET
JEB DR BCC MISS BALANCE 217Z

REG #:	1583684
BD:	4/1/2023
BW:	74
WW:	582

CE	BW	WW	YW	MK	TM	CEM	ST	DOC	CW	REA	MB	\$C	FPI	EPI
12	-0.1	84	130	26	68	6	18	15	49	.61	.19	118.75	83.64	176.26
BREED PERCENTILE RANKING PER EPD														
65	60	10	15	25	10	65	10	4	15	30	85	25	40	5
Breed %		50GV 50AN				OWNER:		JGP Gelbvieh / Burbank Cattle						

Exceptional growth and maternal EPDs on this classy, feminine heifer! Her granddam, BCC Miss Balance 217Z, is a Dam of Distinction - a status that was earned while being flushed as a donor dam. Her EPD profile will cross well on any number of possible sires!



REGISTERED OPEN HEIFERS

Balancer Homo Black Homo Polled **498** JEB BCC Ms Quality Focused 371L

KCF BENNETT QUALITY FOCUSED
MLG 431B
MLG MEADOWLARK TWILA 389Y ET

SCHIEFELBEIN ALLIED 514
JEB BCC MS ALLIED 913G ET
JEB BCC MISS BALANCE 62A

REG #:	1583682
BD:	4/24/2023
BW:	70
WW:	581

CE	BW	WW	YW	MK	TM	CEM	ST	DOC	CW	REA	MB	\$C	FPI	EPI
15	-1.5	79	134	26	66	9	9	10	76	.47	.56	71.03	92.64	168.23
BREED PERCENTILE RANKING PER EPD														
25	30	20	10	25	15	15	>95	90	1	60	15	>95	10	10
Breed %	25GV 75AN		OWNER:		JGP Gelbvieh / Burbank Cattle									

Check out the spread from CE to YW EPDs! Her profile definitely will give you a lot of options! Her granddam, BCC Miss Balance 62A, was a donor dam for us and is probably one of our top \$\$ earning females!



77% Gelbvieh Homo Black Homo Polled **499** DMP L121

CCRO CAROLINA EXCLUSIVE 1230Y
JKGF NEW HORIZON C51 ET
KCF MISS FORTUNE U490

VRT LAZY TV WATCHMAN W021
DMP C121
DMP Z121

REG #:	1579426
BD:	5/10/2023
BW:	70
WW:	663

CE	BW	WW	YW	MK	TM	CEM	ST	DOC	CW	REA	MB	\$C	FPI	EPI
18	-3.4	57	83	21	50	8	13	11	18	.36	.54	94.37	82.17	31.63
BREED PERCENTILE RANKING PER EPD														
4	5	95	95	70	90	25	75	70	90	85	10	80	40	>95
Breed %	77GV 23AN		OWNER:		Pederson Gelbvieh									

GE -EPDS ARE PENDING AN UPDATE AT NEOGEN. CHECK THE SUPPLEMENT SHEET ON SALE DAY! Calving-ease deluxe numbers! Her dam has sold multiple bulls through the Seedstock Plus sales for us!

PB Gelbvieh Homo Black Homo Polled **501** DMP L233

CCRO CAROLINA EXCLUSIVE 1230Y
JKGF NEW HORIZON C51 ET
KCF MISS FORTUNE U490

DCH HILLE X102
DMP G402
DMP B402

REG #:	1579430
BD:	6/21/2023
BW:	75
WW:	808

CE	BW	WW	YW	MK	TM	CEM	ST	DOC	CW	REA	MB	\$C	FPI	EPI
18	-3.0	67	100	28	61	10	14	12	31	.63	.30	96.94	82.47	55.80
BREED PERCENTILE RANKING PER EPD														
3	4	60	60	10	30	3	75	45	35	60	25	85	15	80
Breed %	83GV 17AN		OWNER:		Pederson Gelbvieh									

GE -EPDS ARE PENDING AN UPDATE AT NEOGEN. CHECK THE SUPPLEMENT SHEET ON SALE DAY! Another Purebred heifer with top calving-ease and maternal EPDs! She could fit a lot of programs!

PB Gelbvieh Homo Black Homo Polled **500** DMP L198

CCRO CAROLINA EXCLUSIVE 1230Y
JKGF NEW HORIZON C51 ET
KCF MISS FORTUNE U490

DCH HILLE X102
DMP G198
DMP Z402

REG #:	1579427
BD:	5/15/2023
BW:	70
WW:	686

CE	BW	WW	YW	MK	TM	CEM	ST	DOC	CW	REA	MB	\$C	FPI	EPI
14	-0.9	74	118	30	68	10	17	12	38	.62	.27	123.76	83.01	120.94
BREED PERCENTILE RANKING PER EPD														
30	25	30	15	3	5	3	30	45	15	60	30	35	15	10
Breed %	86GV 12AN 2HH		OWNER:		Pederson Gelbvieh									

GE -EPDS ARE PENDING AN UPDATE AT NEOGEN. CHECK THE SUPPLEMENT SHEET ON SALE DAY! A maternal brother to this heifer sold in the recent Seedstock Plus Fall Bull Sale for \$5000!



REGISTERED OPEN HEIFERS

PB Gelbvieh Homo Black Homo Polled **502**
DMP L509

Balancer Homo Black Homo Polled **503**
DMP L610

CCRO CAROLINA EXCLUSIVE 1230Y
 JKGF NEW HORIZON C51 ET
 KCF MISS FORTUNE U490

REG #:	1579429
BD:	6/23/2023
BW:	80
WW:	846

CCRO CAROLINA EXCLUSIVE 1230Y
 JKGF NEW HORIZON C51 ET
 KCF MISS FORTUNE U490

REG #:	1579432
BD:	6/28/2023
BW:	80
WW:	702

JBOB CAROLINA FORTUNE 2564J ET
 DMP C509
 DMP MS WRIGHT 509R

PVF INSIGHT 0129
 DMP E610
 DMP A610

CE	BW	WW	YW	MK	TM	CEM	ST	DOC	CW	REA	MB	\$C	FPI	EPI
14	-1.4	65	93	24	57	6	14	12	20	.71	.26	99.52	77.57	26.08
BREED PERCENTILE RANKING PER EPD														
30	20	70	75	40	55	50	75	45	80	40	30	80	40	>95
Breed %		96GV 4AN			OWNER:		Pederson Gelbvieh							

CE	BW	WW	YW	MK	TM	CEM	ST	DOC	CW	REA	MB	\$C	FPI	EPI
11	0.0	68	110	22	55	7	16	11	37	1.00	.29	119.64	77.54	76.32
BREED PERCENTILE RANKING PER EPD														
80	60	65	55	60	75	45	30	70	45	1	65	25	75	90
Breed %		75GV 25AN			OWNER:		Pederson Gelbvieh							

GE -EPDS ARE PENDING AN UPDATE AT NEOGEN. CHECK THE SUPPLEMENT SHEET ON SALE DAY! Homo Black & Homo Polled Purebred New Horizon daughter! She'll work in a lot of programs!

Homo Black & Homo Polled New Horizon daughter! Her granddam is a Dam of Merit and her mother has only had heifer calves so far so we can share this one with you!

COMMERCIAL FEMALES

The following LOTS are un-registered, commercial, Replacement Quality females from some of our Seedstock Plus breeders and long-term customers. All the work is done! These are tremendous groups of Black Gelbvieh, Angus and Balancer Influence females.

Duck River Gelbvieh, David Bates 1 spring pair
 Duck River, TN * 931-209-5053

Balancer type female will be a pair by sale day!

Sandy Knoll Farms, Brian Dunn 10 breds/ pairs
 St. John, KS * 620-786-4039

Balancer & Gelbvieh type, home-raised spring breds or pairs

25 head

Balancer & Gelbvieh type open heifers

Reinert Family Farm, John Reinert 15 breds/ pairs
 Billings, MO * 417-224-7204

Balancer & Gelbvieh type females, spring calving herd reduction



Seedstock Plus On-Line Female Sale

Friday May 3, 2024 * soft closes @ 7 p.m.

***Females will be located at Burbank Bull Development,
St Catharine, MO***

***Selling 50 LOTS of Commercial & Registered Females!
Spring Pairs, Fall Breds & Pairs!***

Details at Seedstock Plus & DV Auction websites closer to sale date!



Red or Black, Purebred or Balancer - we have what you need!

'Zade'



'Saguaro'



'Stock Options'



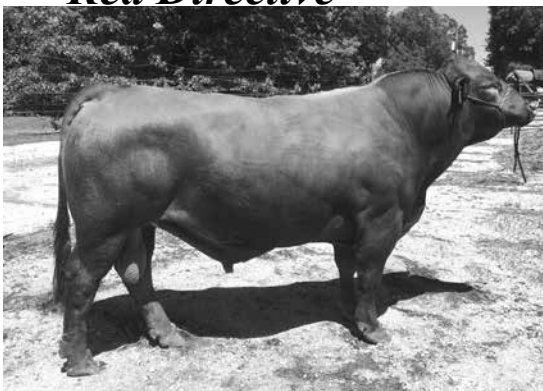
'Redneck'



'Moonshiner'



'Red Directive'



'Hashtag#'



www.seedstockplusgenetics.com

***CHECK OUT THE
UPDATED WEBSITE !***



Contact: Seedstock Plus: 877-486-1160
or email: john@seedstockplus.com

Terms & Conditions

Terms: Terms of the sale are cash or personal check unless satisfactory credit arrangements have been made with the seller previous to the sale.

Bidding: All animals sell to the highest bidder. Any disputes or challenges regarding bids shall be settled by the auctioneer and his decision shall be final. Mailed or telephoned bids will be handled with the strictest confidence.

Registrations & Transfers: Each animal which is offered and sold has a certificate of registry available at the time of sale. The seller is responsible for the proper transfer of the certificate to the purchaser including full payment of transfer fees.

Purchaser's Risk: Each animal becomes the property of and therefore is also the risk of the purchaser as soon as it is sold.

Announcements: Any errors or changes in information contained in the catalog will be announced from the auction block. Such announcements shall take precedence over information contained herein.

Rights and Obligations: The above terms and conditions of sale constitute a contract between the buyer and seller of each animal and shall be equally binding to both. Animals resold following purchase in this sale shall constitute a separate transaction and the rights and obligations of the parties connected thereto are not covered by the above terms and conditions of this sale. Neither the host farm, auctioneers, nor any other person connected with the management or conduct of this sale assumes any liability, legal or otherwise, except as set forth above.

DEFINITIONS AND GUARANTEES

HORNED: An animal with a horn growth affixed to the skull that has or has not been removed.

POLLED/SCURRED: An animal with rudimentary horn growth that will not develop into a horn. The rudimentary horn growth may or may not become affixed to the skull at an older age.

POLLED: An animal with absence of horn growth (An animal can have scurs and still be genetically polled)

DOUBLE POLLED: An animal whose sire and dam are both polled or scurred, this gives this animal the possibility of being homozygous polled for the polled trait but it is not yet proven so.

HOMOZYGOUS POLLED: An animal who carries two polled genes, and will produce polled or polled/scurred offspring with every mating.

DILUTER GENE: A gene carried by some Gelbvieh cattle that affects the degree of red color in the hair coat. Bulls carrying this gene can produce gray calves when mated to black cows or cream colored calves when mated to each other.

DILUTER FREE: All Red Angus are free of the diluter gene as are all red Gelbvieh cattle resulting from a double black mating. Red Gelbviehs can also be proven diluter-free by mating to black cows and producing all red or black offspring

DOUBLE BLACK: An animal whose sire and dam are both black, which give the animal the possibility of being homozygous for the black trait but its not yet proven so.

HOMOZYGOUS BLACK: An animal who carries two black genes and has been proven by mating or genetically tested to produce black or black factor (gray when mated with diluter-based genetics) calves with every mating.

For more information contact: Seedstock Plus Toll Free at: 877-486-1160 or John on his cell: 660-734-1165 or visit the website: www.seedstockplus.com

Seedstock Plus Sale Calendar

North Missouri Bull Sale

February 24, 2024

125 Balancer & Gelbvieh Bulls - all Black!
Kingsville Livestock, Kingsville, MO

Arkansas Bull Sale

March 2, 2024

75 Angus, Brangus, Gelbvieh
& Balancer Bulls - Red & Black!
Hope Livestock Auction, Hope, AR

Red Reward Bull & Heifer Sale

March 9, 2024

50 Red Gelbvieh & Balancer Bulls
Plus! Red Comm & Registered Females
Wheeler Livestock, Osceola, MO

South Missouri Bull & Female Sale

March 23, 2024

125 Balancer & Gelbvieh Bulls - all Black!
Plus! Black Comm & Registered Open Heifers
Joplin Regional Stockyards, Carthage, MO

On-Line Female Sale

Friday May 3, 2024 - soft closes 7 p.m.
Commercial & Registered Females!
details at Seedstock Plus & DV Auction
websites closer to sale date!



Seedstock Plus is proud to once again be listed in the top 100 in bull sales by BEEF Magazine. Ranking # 16 on the list with over 735 bulls sold in the 2022 calendar year! We know bulls and we can certainly help you find one that is right for your program! Contact us if you need help in matching a bull to your needs!

Working Together for Industry Excellence



Seedstock Plus

18864 Kepler Dr.

St. Catharine, MO 64628

RETURN SERVICE REQUESTED

FIRST CLASS MAIL

