

*Seedstock Plus Arkansas
Bull Sale*

*March 1, 2025 *1 p.m.*

*Hope Livestock Market
Hope, Arkansas*

*ALL GELBVIEH & BALANCER BULLS SELL WITH
GENOMIC-ENHANCED EPDS AND ARE SIRE VERIFIED,
COAT COLOR & POLLED TESTED!*



Bid & Buy at:
DVAuction

Working Together for Industry Excellence



Seedstock Plus

Seedstock Plus Arkansas Bull Sale
Saturday March 1, 2025 * 1 p.m *
Hope Livestock Auction, Hope, AR

Marketing Partnership

LBJ Cattle Marketing Inc.

353 Hempstead 4
Hope, AR 71801

Lanny Ford: 870-703-4345
Bart Emerson: 870-904-6671
Jeff Milan: 870-703-0716

Driving Directions: For those of you with a GPS - the street address is 2105 West 3rd St, Hope, AR 71801.
Exit 30 off of I-30 (US 278/Hervey St) go south on Hervey St. Turn right on 3rd St. Sale barn is on the left.

Accommodations:

All 3 hotels are at Exit 30 off I-30 in Hope.
In front of Walmart

Holiday Inn Express
870-722-6262

Hampton Inn
870-777-4567

Best Western
870-777-9222

**Seedstock Plus
Customer Service Programs**

Guaranteed Sight-Unseen Purchases

Free Delivery on bulls
or \$100 Discount if picked up sale day

Bull Warranty Program

Bulls are guaranteed for Fertility, Structure and Disposition. For an additional 5% of purchase price, bull can be warrantied for injury and death for 6 months.

Marketing Assistance Program

- Feeder Calves
- Replacement Females
- Bred Heifers, Cows and Pairs

If you need additional information on a particular program, call us at the Seedstock Plus office.

Health

Seedstock Plus Bulls have been tested and found negative for PI BVD. We recommend producers purchase only bulls that are negative for Persistent Infected BVD Virus. **Bulls are also tested NEGATIVE for Trichomoniasis.** This is not mandated by every state yet but some states are requiring it and we felt it best to be on top of that. The bulls have been vaccinated and boosted with IBR, BVD, PI-3, BRSV-4, Black-leg & Vibrio Lepto. They have been on a regular de-worming schedule since weaning. All the bulls have passed a breeding soundness exam that includes live semen evaluation, palpation, extension and scrotal measurement. All the necessary health tests have been performed and interstate health papers will be available sale day.

Seedstock Plus Arkansas Bull Sale

March 1, 2025 * 1 p.m.

Hope Livestock Auction, Hope AR

Sale Day phone: 870-777-4451

John Burbank cell: 660-734-1165

Matt Burbank cell: 660-734-2739

LBJ Cattle Marketing: Lanny Ford: 870-703-4345

Bart Emerson: 870-904-6671

Jeff Milam: 870-703-0716

Lakin Oakley, Auctioneer..... 903-277-9610

Selling: 90 - Angus, Balancer, Gelbvieh & Brangus Bulls

About the Bulls:

- Prior to delivery to the test, bulls are sorted and culled at home
- Bulls are culled again prior to catalog for poor gain, conformation, disposition, etc.
- All bulls have passed a thorough breeding soundness exam prior to the sale
- All bulls are tested Negative for BVD -PI3 & Trichomoniasis
- All Gelbvieh & Balancer bulls have genomically enhanced EPDs and are Sire Verified.
- All Gelbvieh & Balancer bulls are Polled and Coat Color tested.
- Frame scores & scrotal measurements will be available on a supplement sheet on sale day.
- EPDs update weekly so there will be updated EPDs, Tenderness scores, frame scores & scrotal measurements available on a supplement sheet early the week of the sale.
- **EPDs ARE CURRENT AS OF 1/14/2025**

We are planning to video each of the bulls on February 13th - after they have been semen checked and clipped. The videos will be posted during the following week and will be available to view by February 20th. If you would like to see a video of a specific bull and have access to high speed internet - you can go to our website or www.dvauction.com and download the videos by the bull's LOT #.

Internet Bidding:

The sale will be available to watch and bid real time at www.dvauction.com

1. Create an account under the 'create new account' tab.

2. Apply for bidding by clicking 'apply for bidding' in the upper left corner of the screen. **AT LEAST 24 HOURS PRIOR TO THE SALE!**

3. Tune in to the sale to make your purchases!

Working Together for Industry Excellence



Seedstock Plus

John E. Burbank, CEO

18864 Kepler Dr.

St. Catharine, MO 64628

Toll Free: 877-486-1160 or

cell: 660-734-1165

email: john@seedstockplus.com

www.seedstockplus.com

DVAuction Broadcasting
Real-time Auctions

Industry Commitment

The bulls included in this offering come from producers who are in the Seedstock business for the long haul. They raise the kind of bulls that produce the type of feeder calves that feed well and grade and yield on the rail. These are the kind of bulls that produce the replacement heifers that make our commercial customers so successful. Feel free to contact any of the members listed below if you have questions.

4 W Farms

Contact: Brycen Wiedmer
Troy, KS
816-262-4172

Hebron Ranch

Contact: Daniel Bell
Olaton, KY
270-274-1749

Narrow Gate Cattle

Contact: Larry Kendall
Osage Beach, MO
573-216-9719

Springhaven Farm LLC

Contact: Ken Anderson
Belton, MO
816-506-7947

Bryce Family Farms LLC

Contact: Bryce Cripps
Columbia, MO
573-808-4742

Horizon Farms

Contact: Ed Laverentz
Cheney, KS
316-990-5088

Norwood Gelbvieh

Contact: Jerry Norwood
Carthage, MO
417-850-1023

Stuecken Brothers

Contact: Derek Stuecken
Freeburg, MO
573-690-8543

Burbank Cattle Company

Contact: Matt Burbank
St. Catharine, MO
660-734-2739

JGP Gelbvieh

Contact: Josh Phillips
Lathrop, MO
816-914-6053

Pecan Ridge Gelbvieh

Contact: Jaron Franks
Albertville, AL
256-426-3782

Wannabe Stock Farm

Contact: Gregory Summers
Smithville, MO
816-392-5242

Burns Gelbvieh

Contact: Jesse Burns
Covington, OH
937-606-4861

KZ Cattle Company

Contact: Kerry Zillinger
Columbus, KS
785-543-7614

Pederson Gelbvieh

Contact: David Pederson
Buffalo, MN
320-333-2014

Wolf Gelbvieh

Contact: Travis Wolf
Gothenburg, NE
308-529-3733

Chapuis Cattle Company

Contact: Charlie Chapuis
Louisiana, MO
573-754-0079

L & L Gelbvieh

Contact: Wes Lasher
Smithland, KY
270-564-2315

Reinert Family Farm

Contact: John Reinert
Billings, MO
417-224-7204

Zimmerman Gelbvieh

Contact: Tyler Zimmerman
Harper, KS
620-243-2876

Darnell Farms

Contact: Bobby Darnell
Indian Mound, TN
931-624-5174

Lawman Farms

Contact: Kathleen Merritt
Columbia, MO
419-439-3730

Rex Wood Farms

Contact: Rex Wood
Meadville, MO
660-247-2577

Duck River Gelbvieh

Contact: David Bates
Duck River, TN
931-209-5053

Little Sioux Gelbvieh

Contact: Jack Welle
Milford, IA
712-251-4641

RM Cattle

Contact: Ryan Grable
Troy, KS
785-850-0686

Flint Hills Gelbvieh

Contact: Ronald Schultz
Alma, KS
785-617-0033

Meng Farms Cattle Co.

Contact: Doug Meng
Troy, KS
913-370-0334

Rockin' U Ranch

Contact: Stan Utley
Richmond, MO
816-719-3793

Gatson Gelbvieh

Contact: Adam Gatson
Vandalia, MO
573-721-6482

Mulroy Farms LLC

Contact: Tim Mulroy
Mayetta, KS
785-640-6401

Sandy Knoll Farm Gelbvieh

Contact: Brian L Dunn
St. John, KS
620-786-4039

About The Catalog:

Color possibilities:
 Black - known red carrier
 Homo Black - known homozygous black
 ND Red - non-diluter red
 Red (DC) - red - diluter carrier

Polled Status:
 Polled: Single Polled
 Scurred
 Homo Polled

Balancer COLOR POLLED

540

EPD'S: All Bulls have an LD Profile and 'Genomic Enhanced EPDs'.

Breed Percentile Ranking: This number corresponds to the EPD directly above it to compare EPDs within breed.

PFX NAME

GRAND SIRE
 SIRE
 GRAND DAM
 MAT GRAND SIRE
 DAM
 MAT GRAND DAM

REG #:	REG #:
BD:	B DATE
BW:	BW
WW:	Adj WW

Actual Data:
 Registration #
 Birthdate
 Actual BW
 Adjusted WW

CE	BW	WW	YW	MK	TM	CEM	ST	DOC	CW	REA	MB	\$C	FPI	EPI
BREED PERCENTILE RANKING PER EPD														
Breed % <input type="text"/> OWNER: <input type="text"/>														

Breed Make-up on Balancer bulls. Abbreviations include: AN = Black Angus AR = Red Angus GV = Gelbvieh XX = unknown

Expected Progeny Differences 'EPD' Definitions

The American Gelbvieh Association transitioned to the BOLT system for EPD calculations in the fall of 2018. The American Angus Association had already been using this system for the previous year. There are 12 beef breed Associations in collaboration to form IGS (International Genetic Solutions) which brings a new, streamlined method for incorporating genomic results into the EPDs. This incorporates data and updates EPDs on a weekly basis.

EPD Definitions:

CE: Calving Ease – A number that predicts the average difference in ease with which a sire's calves will be born when he is bred to first calf heifers – **higher numbers indicate greater calving-ease.**

BW: Birth Weight, **WW:** Weaning Weight & **YW:** Yearling Weight – All are expressed in pounds, this shows the expected number of pounds a bull or female will add or subtract from their progeny's birthweight, weaning weight and yearling weight respectively.

MK: Milk: expressed in pounds of weaning weight that a female will add/subtract or that a bull's daughters will have.

TM: Total Maternal - expresses the combination of what a sire transmits to his daughters in the form of genetics for growth and genetics for milking ability. Or that same trait directly applied to a female and expressed in pounds.

CEM: Calving Ease Maternal: this EPD predicts how well an animal's daughters will calve with a higher number being easier calving.

ST: Stayability: Predicts the genetic difference, in terms of percent probability, that a bull's daughters will stay productive within a herd to at least six year of age.

DOC: is expressed as a difference in yearling cattle temperament, with a higher value indicating more favorable docility. It predicts the average difference of progeny from a sire in comparison with another sire's calves. In herds where temperament problems are not an issue, this expected difference would not be realized.

CW: Carcass Weight: expressed in pounds of carcass weight adjusted to a constant fat endpoint.

REA: Rib Eye Area: expressed in square inches of rib eye muscle area adjusted to a constant fat endpoint.

MB: Marbling: expressed in degrees of marbling score, a determinant of USDA Quality Grade. Value is adjusted to a constant fat endpoint.

\$Cow: Represents the genetic value in dollars of profit of an animal when retained as a replacement female relative to other animals in the herd. A higher number represents more profitable genetics for maternal productivity.

FPI: An economic selection index designed to aid producers in selecting sires whose progeny will perform in the feedlot and are sold on grade and yield.

EPI: An economic selection index developed to aid producers in selecting for more feed efficient cattle that still have acceptable amounts of gain.



We are proud to announce that moving forward, all Seedstock Plus bulls will be developed by Burbank Bull Development LLC in St. Catharine, MO. Matt & Cammie Burbank, with the help of their kids, will handle the daily feed & care of all Seedstock Plus bulls, on-line females and growing bulls from weaning until graduating into the Seedstock Plus development test.

We would like to thank the crew at RJM Farms in Holden, MO for many years of excellent work on behalf of the Seedstock Plus group developing the bulls for our program. The entire Anstine family, Tim & Janet Evert and others in the Holden area are friends, customers and have contributed to the past success of Seedstock Plus. We will continue to support those relationships in the Warrensburg, Holden and Kingsville area but admit that we are excited to bring the development of the Seedstock Plus bulls home.

We would encourage anyone to come visit the new and improved facility that will accommodate all we do here at home and all the needs of the Seedstock Plus program. Although we did not install the GrowSafe system (due to cost & labor issues), we have made some significant improvements to the bull development process such as large pasture turn-out paddocks for the bulls. Our family is committed to the future success of the Seedstock Plus program.

Bull Warranty Program Insurance for your bull!

Several years ago, Seedstock Plus instituted an insurance program for new bull purchases in an effort to protect our customers from a catastrophic loss if something should happen to a bull within the first breeding season. This program covers any and all possible things that a bull can do to himself in the first six months of ownership. The warranty costs **5%** of the purchase price and should you have to use it, we try to either bring you a comparable replacement or find a suitable loaner bull to get the cows bred if you are still in the midst of breeding season. If something happens to him towards the end of the season, we still cover that but often will either take the bull back and issue a credit towards your next purchase or have you ship the bull, keep the salvage funds and issue a credit for the balance. Any way you look at it - we get you back even! We've warrantied bulls that have been hit by lightning, hit by trains, drowned, broken various body parts or been injured in such a way that he won't ever be sound to breed cows again.

There are very few affordable commercial insurance policies that will cover a bull for loss of use. Farm policies will cover 'acts of God' (so do we!) but again, an injury is just your tough luck. The **5%** of purchase price cost is a small price if something happens to your bull within that first 6 months!

We appreciate the fact that you've put your trust in us to present you with a bull that has a good disposition, good feet and legs and will breed cows - we feel those things should be 'on us' and you don't need insurance if you have a problem in one of these areas - you just need to let us know and we'll take care of it. We try to catch every possible problem prior to the sale but things happen and bulls are bulls.... But if your bull gets injured or dies, he needs to be insured! Take a good look at what the warranty can offer you and be sure to tell us at the settlement table that you want to insure your bull!

About Angus Bulls

All of the Angus bulls in this category are registered with the American Angus Association and their EPD's are the most current provided by their Association. Remember that the Angus EPD's can only be compared within breed and to the breed average. The average EPD's for Angus bulls as of 1/19/2025:

CE: 6 BW: 1.3 WW: 67 YW: 117 MK: 26 CEM: 8 DOC: 19 CW: 54
 REA: .69 MB: .75 \$W:61 \$F: 93 \$G: 55 \$B: 152 \$C: 260

Angus Index EPD Definitions:

\$W: (Weaned Calf Value) is an index value expressed in dollars per head and is the expected average difference in future progeny performance for preweaning merit. \$W includes both revenue and cost adjustments associated with differences in birth weight, weaning direct growth, maternal milk and mature cow size

\$F: (Feedlot Value) & **\$G** (Grid Value) (are both an index value expressed in dollars per head, and are the expected average difference in future progeny performance for postweaning merit (\$F) and progeny performance for carcass grid (\$G) compared to progeny of other sires

\$B: (Beef Value) is an index value expressed in dollars per head and is the expected average difference in future progeny performance for postweaning and carcass value compared to progeny of other sires

\$C: (Combined Value) is an index expressed in dollars per head. The EPDs directly influencing this combined index: calving ease direct (CE) and maternal (CEM), weaning weight (WW), yearling weight (YW), maternal milk (MK), heifer pregnancy (HP), docility (DOC), mature cow weight (MW), foot angle (Angle), claw set (Claw), dry matter intake (DMI), marbling (MB), carcass weight (CW), ribeye area (RE) and fat thickness (Fat) Utilize this index with the objective that producers will replace 20% of their breeding females per year with replacement heifers retained within their own herd. The remaining cull heifer and steer progeny are then assumed to be sent to the feedlot where the producers retain ownership of those cattle and sell them on a quality-based carcass merit grid.

Angus

Ward Duke 308

B BAR WINDY 7 3575
 MILLARS DUKE 816
 MILLARS QUEEN LASS 5273
 KLR BISMARCK 0042
 JM ESBON J009-J222
 JM ESBON 824-J009

REG #:	20883899
BD:	2/14/2023
BW:	74
WW:	651

CE	BW	WW	YW	MK	CEM	DOC	CW	REA	MB	\$W	\$F	\$G	\$B	\$C
6	0.6	64	110	24	5	20	34	.29	22	60	94	25	119	225
BREED PERCENTILE RANKING PER EPD														
55	35	60	65	65	80	50	90	95	95	55	50	95	90	80
Breed %		100AN			OWNER:					Ward Farms				

Angus

Ward Duke 313

B BAR WINDY 7 3575
 MILLARS DUKE 816
 MILLARS QUEEN LASS 5273
 WF GRAN TORINO 95
 WARD ERICA 367
 J C ERICA 16

REG #:	20883900
BD:	2/14/2023
BW:	77
WW:	626

CE	BW	WW	YW	MK	CEM	DOC	CW	REA	MB	\$W	\$F	\$G	\$B	\$C
6	0.3	59	100	25	6	18	42	.41	28	57	87	30	117	224
BREED PERCENTILE RANKING PER EPD														
55	30	75	80	55	70	60	80	85	90	65	60	95	90	80
Breed %		100AN			OWNER:					Ward Farms				

Angus

Ward Duke 315

B BAR WINDY 7 3575
 MILLARS DUKE 816
 MILLARS QUEEN LASS 5273
 WB PENDLETON 708 PVF SWSN
 WARD LASS 016
 WARD LASS 660

REG #:	20883894
BD:	2/20/2023
BW:	70
WW:	576

CE	BW	WW	YW	MK	CEM	DOC	CW	REA	MB	\$W	\$F	\$G	\$B	\$C
7	0.3	60	101	23	5	17	53	.69	.06	55	101	25	125	223
BREED PERCENTILE RANKING PER EPD														
45	30	70	80	70	80	65	55	50	95	70	35	95	80	85
Breed %		100AN			OWNER:					Ward Farms				

Angus

Ward Duke 303

B BAR WINDY 7 3575
 MILLARS DUKE 816
 MILLARS QUEEN LASS 5273
 WARD INSIGHT 510
 WARD ERICA 148
 J C ERICA 16

REG #:	20883895
BD:	2/9/2023
BW:	75
WW:	623

CE	BW	WW	YW	MK	CEM	DOC	CW	REA	MB	\$W	\$F	\$G	\$B	\$C
6	0.1	62	105	24	7	15	51	.61	.24	59	100	31	132	240
BREED PERCENTILE RANKING PER EPD														
55	25	65	75	65	65	70	60	95	60	35	95	75	75	70
Breed %		100AN			OWNER:					Ward Farms				

131

Angus

Ward Playbook 330

TEX PLAYBOOK 5437
 SAMPSON CD PLAYBOOK 1946
 CONLEY EISA ERICA 4460
 MEAD WEIGH UP N167
 WARD LADY 457
 JM LADY FRANKLIN J035-J349

REG #:	20883603
BD:	4/16/2023
BW:	68
WW:	632

CE	BW	WW	YW	MK	CEM	DOC	CW	REA	MB	\$W	\$F	\$G	\$B	\$C
10	0.1	53	96	27	13	24	35	.23	.44	52	81	37	117	226
BREED PERCENTILE RANKING PER EPD														
25	25	85	85	40	10	30	90	95	80	75	75	85	90	80
Breed %		100AN			OWNER:					Ward Farms				

135

ANGUS BULLS

Angus

Ward Thrive 390

TEHAMA REVERE
S THRIVE JAS 5515
S SELENA 201

LIMESTONE MARATHON U250
BUFORD EMMA 707Y
SITZ EMMA E 120P

REG #:	21141269
BD:	9/15/2023
BW:	71
WW:	568

CE	BW	WW	YW	MK	CEM	DOC	CW	REA	MB	\$W	\$F	\$G	\$B	\$C
8	0.8	49	89	25	9	27	30	.37	.44	45	71	36	108	220
BREED PERCENTILE RANKING PER EPD														
35	40	90	90	55	40	15	95	85	80	90	90	36	95	85
Breed %	100AN				OWNER:	Ward Farms								

136

Angus

Ward Thrive 352

TEHAMA REVERE
S THRIVE JAS 5515
S SELENA 201

SEDGWICKS OUTLAW 538W
W F ARKDALE PRIDE 403B
WALLACE ARKDALE PRIDE 186

REG #:	21141219
BD:	9/18/2023
BW:	68
WW:	575

CE	BW	WW	YW	MK	CEM	DOC	CW	REA	MB	\$W	\$F	\$G	\$B	\$C
7	1.0	50	95	26	8	27	33	.53	.50	44	78	45	122	219
BREED PERCENTILE RANKING PER EPD														
45	45	90	85	50	55	15	95	70	75	90	80	70	85	85
Breed %	100AN				OWNER:	Ward Farms								

140

Angus

Ward Thrive 348

TEHAMA REVERE
S THRIVE JAS 5515
S SELENA 201

LD CAPITALIST 316
WARD ARKDALE PRIDE 508
WARD ARKDALE PRIDE 640

REG #:	21141218
BD:	9/16/2023
BW:	72
WW:	791

CE	BW	WW	YW	MK	CEM	DOC	CW	REA	MB	\$W	\$F	\$G	\$B	\$C
6	1.5	75	131	27	9					65	86			
BREED PERCENTILE RANKING PER EPD														
55	55	30	30	40	40					45	65			
Breed %	100AN				OWNER:	Ward Farms								

137

Angus

Ward Thrive 368

TEHAMA REVERE
S THRIVE JAS 5515
S SELENA 201

CONNELLY ARMORY
WARD EILEENMERE 021
JM LADY 1014 TOTAL M836-J353

REG #:	21141217
BD:	9/18/2023
BW:	70
WW:	583

CE	BW	WW	YW	MK	CEM	DOC	CW	REA	MB	\$W	\$F	\$G	\$B	\$C
7	0.8	56	106	29	9					51	79			
BREED PERCENTILE RANKING PER EPD														
45	40	80	70	30	40					80	75			
Breed %	100AN				OWNER:	Ward Farms								

141

Angus

Ward Moxley 349

MUSGRAVE CRACKERJACK
MUSGRAVE MOXLEY
MUSGRAVE JUANA ERICA 888-454

CONNELLY ARMORY
WARD TROWBRIDGE PRIDE 020
WARD TROWBRIDGE PRIDE 267

REG #:	21141165
BD:	9/17/2023
BW:	73
WW:	702

CE	BW	WW	YW	MK	CEM	DOC	CW	REA	MB	\$W	\$F	\$G	\$B	\$C
7	0.5	68	121	35	9	15	50	.65	.61	71	98	49	148	258
BREED PERCENTILE RANKING PER EPD														
45	35	50	45	10	40	70	60	55	65	30	40	60	55	55
Breed %	100AN				OWNER:	Ward Farms								

138

Angus

Ward Down Spout 372

S A V RAINFALL 6846
S A V DOWNSPOUT 1878
S A V MADAME PRIDE 4407

BC LOYAL C1951
WARD LADY TOTAL 043
JM LADY TOTAL M958-J441

REG #:	21141066
BD:	9/30/2023
BW:	70
WW:	681

CE	BW	WW	YW	MK	CEM	DOC	CW	REA	MB	\$W	\$F	\$G	\$B	\$C
6	0.8	56	101	22	5					46	75			
BREED PERCENTILE RANKING PER EPD														
55	40	80	80	80	80					90	85			
Breed %	100AN				OWNER:	Ward Farms								

142

Angus

Ward Moxley 351

MUSGRAVE CRACKERJACK
MUSGRAVE MOXLEY
MUSGRAVE JUANA ERICA 888-454

BC LOYAL C1951
WARD ARKDALE PRIDE 9055
WALLACE ARKDALE PRIDE 186

REG #:	21141166
BD:	9/17/2023
BW:	70
WW:	582

CE	BW	WW	YW	MK	CEM	DOC	CW	REA	MB	\$W	\$F	\$G	\$B	\$C
9	-0.1	52	95	26	8					48	71			
BREED PERCENTILE RANKING PER EPD														
30	25	90	85	50	55					85	90			
Breed %	100AN				OWNER:	Ward Farms								

139

Angus

Ward Growth Fund 385

DEER VALLEY GROWTH FUND
SAMPSON GROWTH FUND 115
SAMPSON BLACKBIRD 1709

BOYD CARTWRIGHT 3303
WARD NEW DESIGN 347
JM NEW DESIGN 564-M958

REG #:	21140788
BD:	10/1/2023
BW:	69
WW:	696

CE	BW	WW	YW	MK	CEM	DOC	CW	REA	MB	\$W	\$F	\$G	\$B	\$C
11	-0.1	67	120	24	11	15	46	.44	.36	61	100	34	134	237
BREED PERCENTILE RANKING PER EPD														
15	25	50	65	25	70	70	80	85	55	35	90	70	75	
Breed %	100AN				OWNER:	Ward Farms								

143

ANGUS BULLS

Angus

Ward Growth Fund 354

144

DEER VALLEY GROWTH FUND
SAMPSON GROWTH FUND 115
SAMPSON BLACKBIRD 1709

REG #:	21141108
BD:	10/3/2023
BW:	75
WW:	668

LD CAPITALIST 316
WARD LADY 9006
WARD LADY 457

CE	BW	WW	YW	MK	CEM	DOC	CW	REA	MB	\$W	\$F	\$G	\$B	\$C
7	1.5	65	122	24	11	18	51	.51	.58	54	106	46	152	254
BREED PERCENTILE RANKING PER EPD														
45	55	55	45	65	25	60	60	75	65	70	25	65	50	55
Breed %		100AN			OWNER:		Ward Farms							

Angus

Ward Growth Fund 360

145

DEER VALLEY GROWTH FUND
SAMPSON GROWTH FUND 115
SAMPSON BLACKBIRD 1709

REG #:	21141087
BD:	10/5/2023
BW:	68
WW:	653

WARD TRACTION 247
WARD EXPRESS 9028
WARD EXPRESS 297

CE	BW	WW	YW	MK	CEM	DOC	CW	REA	MB	\$W	\$F	\$G	\$B	\$C
10	-0.3	60	110	24	10					52	79			
BREED PERCENTILE RANKING PER EPD														
25	20	70	65	65	30					75	75			
Breed %		100AN			OWNER:		Ward Farms							

Angus

Ward Growth Fund 381

146

DEER VALLEY GROWTH FUND
SAMPSON GROWTH FUND 115
SAMPSON BLACKBIRD 1709

REG #:	21141077
BD:	10/15/2023
BW:	71
WW:	627

BC LOYAL C1951
WARD ERICA 011
WARD ERICA 148

CE	BW	WW	YW	MK	CEM	DOC	CW	REA	MB	\$W	\$F	\$G	\$B	\$C
10	-0.2	61	111	21	9					50	79			
BREED PERCENTILE RANKING PER EPD														
25	20	70	65	85	40					80	75			
Breed %		100AN			OWNER:		Ward Farms							

Angus

Ward Growth Fund 359

147

DEER VALLEY GROWTH FUND
SAMPSON GROWTH FUND 115
SAMPSON BLACKBIRD 1709

REG #:	21141116
BD:	10/30/2023
BW:	70
WW:	673

BC LOYAL C1951
WARD EILEENMERE 9033
JM LADY 1014 TOTAL M836-J353

CE	BW	WW	YW	MK	CEM	DOC	CW	REA	MB	\$W	\$F	\$G	\$B	\$C
12	-1.2	61	109	24	10	15	43	.57	.47	59	90	41	131	231
BREED PERCENTILE RANKING PER EPD														
10	10	70	65	65	30	70	80	65	75	60	55	75	75	75
Breed %		100AN			OWNER:		Ward Farms							

About Balancer® Bulls

The Profitable Blend of Angus and Gelbvieh Genetics!

Balancer hybrids offer a simple and powerful way to maintain hybrid vigor and the proper blend of British and Continental genetics in your cowherd without complicated crossbreeding systems. Registered Balancer hybrids combine the Angus advantages of calving ease, moderate mature size, marbling and convenience traits with Gelbvieh growth, muscle leanness, fertility and unequalled pounds of calf per cow exposed in a single animal. And, documented research proves that Balancer hybrids offer the same consistency as their purebred parents with improved uniformity of composition. Plus, Balancers are registered seedstock, complete with documented parentage and EPD's. Balancer bulls are registered as Gelbvieh and Angus or Red Angus hybrids with a minimum of 75% of the pedigree documented and with both the sire and the dam recorded with their respective association. There are also registered Hybrid bulls in this category, the difference being a varying percentage of Gelbvieh as well as a mixture of other breeds. These bulls can be used in a similar way as the Balancer bulls as long as the buyer is aware of the actual breed makeup as close as can be known.

Both the Balancer & Hybrid bulls' EPD's are figured on the Gelbvieh base and can be compared to the Gelbvieh bulls. The average EPD's for Balancer bulls as of 1/14/2025 are:

CE: 13 BW: -0.5 WW: 73 YW: 114 Milk: 24 TM: 60 CEM: 7 ST: 15
DOC: 12 CW: 38 REA: .52 MB: .38 \$C: 107.46 FPI: 83.08 EPI: 117.36

Balancer Black Homo Polled TMGC SB Cactus 85L

148

TMMW DESTINATION 82Y
BTBR SAGUARO 8111F ET
JEB BCC MISS OBJECTIVE 41W

BNG OVERTIME 23Y
TMGC SB OT OF 36X 78F ET
TMGC 36X

REG #:	1567029
BD:	3/2/2023
BW:	77
WW:	633

CE	BW	WW	YW	MK	TM	CEM	ST	DOC	CW	REA	MB	\$C	FPI	EPI
12	3.3	91	143	21	67	7	17	14	49	.40	.53	121.72	92.36	178.61
BREED PERCENTILE RANKING PER EPD														
65	>95	3	5	75	15	45	20	15	20	75	20	25	15	5
Breed %		56GV 44AN			OWNER:		Stuecken Bros							

Balancer Red (DC) Homo Polled BRNS 311L

149

RAB BIEBER HARD DRIVE Y120
DBRG MR HARD DRIVE 0175H ET
DBRG MS WINTHROP 330A

KRT LAZY TV FLAT IRON U225
BRNS 1512C
ABF 6058S

REG #:	1600409
BD:	4/5/2023
BW:	78
WW:	571

CE	BW	WW	YW	MK	TM	CEM	ST	DOC	CW	REA	MB	\$C	FPI	EPI
14	-1.8	74	119	21	58	10	15	15	32	.79	.29	104.60	84.07	123.38
BREED PERCENTILE RANKING PER EPD														
40	25	45	40	75	65	10	45	5	70	10	70	60	45	45
Breed %		50GV 50AR			OWNER:		Burns Gelbvieh							

BALANCER BULLS

Balancer Homo Black Homo Polled **150**
DAMG Extreme Stock Opt 74L

CCRO CAROLINA LEVERAGE 3214A
 DCH HILLE STOCK OPTIONS D410
 DCH HILLE B189 ET

JJNR MONEY TALKS B43C
 DAMG GENUINE MONEY TALKS 2G
 JGGP WILMA 741E

REG #:	1574275
BD:	7/18/2023
BW:	88
WW:	626

CE	BW	WW	YW	MK	TM	CEM	ST	DOC	CW	REA	MB	\$C	FPI	EPI
12	3.3	98	142	26	75	7	17	17	52	.71	.40	130.07	93.92	153.67
BREED PERCENTILE RANKING PER EPD														
65	>95	1	10	25	2	45	20	1	15	15	45	15	10	20
Breed %		72GV 28AN			OWNER:					Reinert Family Farm				

Balancer Black Homo Polled **153**
KZC L167

SFGC FORTUNE HAWK 534C
 KZC HAWK F213
 NEWF 7D

RLS REGULAR STANDARD 321A ET
 KZC F57
 KZC C22

REG #:	1612236
BD:	7/24/2023
BW:	78
WW:	594

CE	BW	WW	YW	MK	TM	CEM	ST	DOC	CW	REA	MB	\$C	FPI	EPI
12	0.4	70	108	26	62	5	12	11	35	.58	.40	85.67	81.11	195.03
BREED PERCENTILE RANKING PER EPD														
65	70	65	65	25	40	80	85	75	60	40	45	90	60	2
Breed %		48GV 46AN 6AR			OWNER:					KZ Cattle Company				

GE-EPDS ARE PENDING A RE-TEST

Balancer Homo Black Homo Polled **151**
RFFM Highlife Victor 75L

JKGF DITKA C85
 LRSF HIGH LIFE H64
 SINK MS EDISON 319A

NORG COMBAT READY D54
 RFFM MS 34F COMBAT READY 34H
 RFFM FINCH DESTINATION 34F

REG #:	1574928
BD:	7/21/2023
BW:	86
WW:	612

CE	BW	WW	YW	MK	TM	CEM	ST	DOC	CW	REA	MB	\$C	FPI	EPI
12	0.9	94	147	22	69	7	14	14	62	.88	-.10	100.41	81.66	164.52
BREED PERCENTILE RANKING PER EPD														
65	80	2	4	65	10	45	60	15	3	4	>95	70	55	10
Breed %		64GV 36AN			OWNER:					Reinert Family Farm				

Balancer Black Homo Polled **154**
NORG Baseline L16

EGL LIFELINE B101
 PROB NORG BASELINE 2H
 PROB MISS HICKOK 307F

NORG LUCKY F780
 NORG LINDA J61
 NORG LINDA A61

REG #:	1582083
BD:	8/7/2023
BW:	66
WW:	667

CE	BW	WW	YW	MK	TM	CEM	ST	DOC	CW	REA	MB	\$C	FPI	EPI
13	0.5	87	128	25	69	5	12	12	50	.71	.34	86.22	89.16	104.72
BREED PERCENTILE RANKING PER EPD														
50	75	10	20	35	10	80	85	50	15	15	60	90	25	65
Breed %		60GV 40AN			OWNER:					Norwood Gelbvieh				

Balancer Black Homo Polled **152**
GMF 317L

SANDPOINT BUTKUS X797
 PANTHER CR BUTKUS 6703
 PATHER CR ERROLINE 400

DCSF POST ROCK POWER BUILT 37B8
 HRRR 15J
 CIRS 2206Z

REG #:	1585482
BD:	7/22/2023
BW:	84
WW:	635

CE	BW	WW	YW	MK	TM	CEM	ST	DOC	CW	REA	MB	\$C	FPI	EPI
13	0.0	74	120	19	61	9	11	10	44	.40	.34		81.40	
BREED PERCENTILE RANKING PER EPD														
50	60	45	35	85	45	15	95	90	30	75	60		60	
Breed %		44GV 53AN 3AR			OWNER:					Meng Farms Cattle Company				

Balancer Homo Black Homo Polled **155**
KZC L162

SPFR 204Z
 KZC E71
 ABF 2207Z

SFGC FORTUNE HAWK 534C
 KZC F35
 KZC D44

REG #:	1612242
BD:	8/18/2023
BW:	85
WW:	640

CE	BW	WW	YW	MK	TM	CEM	ST	DOC	CW	REA	MB	\$C	FPI	EPI
11	0.9	82	117	28	68	6	11	15	46	1.07	.46	82.63	88.69	162.59
BREED PERCENTILE RANKING PER EPD														
80	80	20	45	15	15	65	95	5	25	1	30	95	25	15
Breed %		75GV 25AN			OWNER:					KZ Cattle Company				



Balancer Black Homo Polled **156**
NORG Big Whiskey L26

VRT LAZY TV SAM U451
 PROB NORG BIG WHISKEY 12H
 PROB MISS JUSTICE 317F

E A F UPWARD 759U
 NORG HONEY B26
 NORG W26

REG #:	1582061
BD:	8/19/2023
BW:	78
WW:	617

CE	BW	WW	YW	MK	TM	CEM	ST	DOC	CW	REA	MB	\$C	FPI	EPI
13	0.3	70	112	26	62	7	20	14	35	.66	.36	136.87	80.91	86.29
BREED PERCENTILE RANKING PER EPD														
50	70	65	55	25	40	45	3	15	60	25	55	10	60	85
Breed %		69GV 25AN 6AR			OWNER:					Norwood Gelbvieh				

BALANCER BULLS

Balancer Homo Black Homo Polled **157**
TMMW Mr Treasure 106L

MGR TREASURE
 TAU FORTUNE 8H ET
 TAU MS GUNNISON 106R 3147A

TMMW MR GRANITE 180A
 TMMW MISS GRANITE 39E
 TMMW BISMARCKS MISS DYNAMIC 7A

REG #:	1591263
BD:	9/1/2023
BW:	70
WW:	727



CE	BW	WW	YW	MK	TM	CEM	ST	DOC	CW	REA	MB	\$C	FPI	EPI
12	1.8	86	140	24	68	9	18	14	44	.45	.36	123.19	86.86	141.03
BREED PERCENTILE RANKING PER EPD														
65	95	10	10	45	15	15	10	15	30	65	55	20	30	30
Breed %		50GV 50AN			OWNER:			Mulroy Farms LLC						

Balancer Homo Black Homo Polled **158**
NGCC NG Wideload L52

JJNR MR PAYWEIGHT B42E
 JJNR MR WIDELoad B25J
 JJNR MISS B29 B69F

JOSH MR DITKA 624E
 NGCC NG CADDY J529
 NGCC NG CADDY E519

REG #:	1581513
BD:	9/1/2023
BW:	72
WW:	574

CE	BW	WW	YW	MK	TM	CEM	ST	DOC	CW	REA	MB	\$C	FPI	EPI
10	1.7	86	138	27	70	6	14	12	38	.61	.31	107.52	87.16	140.08
BREED PERCENTILE RANKING PER EPD														
90	90	10	10	20	10	65	60	50	50	30	65	50	30	30
Breed %		56GV 42AN 2XX			OWNER:			Narrow Gate Cattle						

Balancer Homo Black Homo Polled **161**
LAW Mark 331L

DLW TPG JACKPOT 7551B ET
 BWF BRANDYWINE GUNNAR 942G
 BWF 208Z

BYERGO BLACK MAGIC 3348
 FHCC PERFECTION 0421
 WA MS PERFECTION 9018-2813

REG #:	1583808
BD:	9/4/2023
BW:	89
WW:	641

CE	BW	WW	YW	MK	TM	CEM	ST	DOC	CW	REA	MB	\$C	FPI	EPI
7	2.3	88	150	25	69	4	12	15	60	.83	.52			90.26
BREED PERCENTILE RANKING PER EPD														
>95	95	10	3	35	10	95	85	5	4	10	20			20
Breed %		50GV 50AN			OWNER:			Lawman Farms						

Balancer Homo Black Homo Polled **159**
TMMW Mr Derecho 108L

DBRG WHIRLWIND 735E
 VRT LAZY TV DERECHO J660
 VRT LAZY TV WINNIE G133

TMMW MR GRANITE 180A
 TMMW MISS GRANITE 211F
 TMMW MISS NEVADA 75C

REG #:	1591265
BD:	9/2/2023
BW:	67
WW:	520

CE	BW	WW	YW	MK	TM	CEM	ST	DOC	CW	REA	MB	\$C	FPI	EPI
17	-6.8	56	90	25	53	11	19	13	15	.15	.25	123.02	77.98	163.58
BREED PERCENTILE RANKING PER EPD														
10	1	>95	95	35	85	3	5	30	>95	80	20	75	15	
Breed %		56GV 44AN			OWNER:			Mulroy Farms LLC						

Balancer Homo Black Homo Polled **162**
RUR Desert Dream 27L

TMMW DESTINATION 82Y
 BTBR SAGUARO 8111F ET
 JEB BCC MISS OBJECTIVE 41W

THM TOUR OBJECTIVE 386-523
 TMGC SB ESSENTIAL 27F
 TMGC SB BRIDGET 71D

REG #:	1592562
BD:	9/4/2023
BW:	68
WW:	541

CE	BW	WW	YW	MK	TM	CEM	ST	DOC	CW	REA	MB	\$C	FPI	EPI
15	0.0	76	128	23	61	10	14	12	57	.69	.51	104.31	89.04	136.02
BREED PERCENTILE RANKING PER EPD														
25	60	40	20	55	45	10	60	50	10	20	20	60	25	30
Breed %		51GV 49AN			OWNER:			Rockin'-U-Ranch						

Balancer Homo Black Homo Polled **160**
BRNS 361L

DLW LIFELINE 5065E
 TMMW MR LIFELINE 63H
 TMMW MISS NEVADA 54B

TMMW MR BANKER 215C
 BRNS 061H
 DRGF 395A

REG #:	1613490
BD:	9/4/2023
BW:	82
WW:	523

CE	BW	WW	YW	MK	TM	CEM	ST	DOC	CW	REA	MB	\$C	FPI	EPI
12	1.5	79	125	16	55	6	11	12	50	.58	.39	79.08	82.80	96.74
BREED PERCENTILE RANKING PER EPD														
65	90	25	25	>95	80	65	95	50	15	40	45	95	50	75
Breed %		49GV 51AN			OWNER:			Burns Gelbvieh						

Balancer Homo Black Homo Polled **163**
RDW 318L

TMMW DESTINATION 82Y
 MTB BCC PEDRO 6A
 JEB BCC MISS OBJECTIVE 41W

JJNR READY CASH B52C
 RDW 605F WTL
 RDW MISS BABY BLACK 143Y

REG #:	1594275
BD:	9/7/2023
BW:	73
WW:	559

CE	BW	WW	YW	MK	TM	CEM	ST	DOC	CW	REA	MB	\$C	FPI	EPI
12	0.8	74	120	22	59	8	16	14	32	.42	.45	110.87	83.52	136.25
BREED PERCENTILE RANKING PER EPD														
65	80	45	35	65	55	30	30	15	70	70	35	45	50	30
Breed %		55GV 45AN			OWNER:			Rex Wood Farms						

BALANCER BULLS



Balancer Homo Black Homo Polled **167**
RDW 327L

SYDGEN ENHANCE
 MSHP SMOKEYS MOONSHINER
 MTB BCC MISS BALANCE 46A

JBOB CAROLINA FORTUNE 2564J ET
 RDW 154B
 RAZ MISS CORRINE 527R

REG #:	1594281
BD:	9/8/2023
BW:	70
WW:	696

CE	BW	WW	YW	MK	TM	CEM	ST	DOC	CW	REA	MB	\$C	FPI	EPI
18	-2.1	76	121	28	67	8	11	15	33	.19	.55	80.10	91.89	130.55
BREED PERCENTILE RANKING PER EPD														
5	20	40	35	15	15	30	95	5	65	>95	15	95	15	40
Breed %			50GV 50AN			OWNER:			Rex Wood Farms					

Balancer Homo Black Homo Polled **164**
RUR Bruno 182L

TMMW DESTINATION 82Y
 BTBR SAGUARO 8111F ET
 JEB BCC MISS OBJECTIVE 41W

JKGF CHIEF JUSTICE C205
 RUR SHINING STAR 82H
 RUR MISS BRANDY 81A

REG #:	1592575
BD:	9/7/2023
BW:	68
WW:	672

CE	BW	WW	YW	MK	TM	CEM	ST	DOC	CW	REA	MB	\$C	FPI	EPI
11	-0.9	80	128	23	63	7	19	10	43	.61	.34	134.27	86.39	139.53
BREED PERCENTILE RANKING PER EPD														
80	40	25	20	55	35	45	5	90	30	30	60	10	35	30
Breed %			69GV 31AN			OWNER:			Rockin'-U-Ranch					

Balancer Homo Black Homo Polled **168**
GATS Gatson Dir Dr Lanny 325L

V A R DISCOVERY 2240
 JNCC DIRECT DRIVE 590C
 JNCC RIKKI FORTUNE 09X

BWF BRANDYWINE ZORRO 275Z
 GATS GATSON ZORRO ALL BU GAL 955G
 TMGC SB MADONNA 151B

REG #:	1578515
BD:	9/9/2023
BW:	78
WW:	577

CE	BW	WW	YW	MK	TM	CEM	ST	DOC	CW	REA	MB	\$C	FPI	EPI
12	1.7	82	129	20	60	8	18	12	42	.64	.54	123.89	89.79	120.17
BREED PERCENTILE RANKING PER EPD														
65	90	20	20	80	50	30	10	50	35	25	20	20	20	50
Breed %			68GV 32AN			OWNER:			Gatson Gelbvieh					

Balancer Homo Black Homo Polled **165**
BRNS 367L

BTBR MR BLACK CROSS 8220 ET
 SKF DUNN'S ABSOLUTE PROBITY 232H
 SKF DUNNS MISS ABSOLUTE 702E

TMMW MR BANKER 215C
 BRNS 164J
 BRNS 988G

REG #:	1613494
BD:	9/8/2023
BW:	72
WW:	559

CE	BW	WW	YW	MK	TM	CEM	ST	DOC	CW	REA	MB	\$C	FPI	EPI
18	-0.7	78	130	19	58	8	16	14	39	.54	.37	109.06	87.58	208.16
BREED PERCENTILE RANKING PER EPD														
5	45	30	20	85	65	30	30	15	45	45	50	50	30	1
Breed %			56GV 44AN			OWNER:			Burns Gelbvieh					

Balancer Homo Black Homo Polled **169**
RUR Saguaro Hijo D212L

TMMW DESTINATION 82Y
 BTBR SAGUARO 8111F ET
 JEB BCC MISS OBJECTIVE 41W

DLW ALUMNI 7513A ET
 DMP H212
 DMP Z121

REG #:	1592580
BD:	9/9/2023
BW:	72
WW:	594

CE	BW	WW	YW	MK	TM	CEM	ST	DOC	CW	REA	MB	\$C	FPI	EPI
13	-0.4	85	136	18	60	8	18	9	45	.58	.50	127.22	93.23	159.41
BREED PERCENTILE RANKING PER EPD														
50	50	10	10	90	50	30	10	95	25	40	25	15	10	15
Breed %			71GV 29AN			OWNER:			Rockin'-U-Ranch					

Balancer Homo Black Homo Polled **166**
DRGF 324L

GMF FORTUNE 616D
 HRZN H182
 HRZN E103

ABF 8139U
 ABF 2235Z
 ABF 5007R

REG #:	1601553
BD:	9/8/2023
BW:	73
WW:	650

CE	BW	WW	YW	MK	TM	CEM	ST	DOC	CW	REA	MB	\$C	FPI	EPI
13	-0.7	64	96	27	59	7	18	9	47	.69	.39	119.93	78.56	94.62
BREED PERCENTILE RANKING PER EPD														
50	45	85	90	20	55	45	10	95	20	20	45	25	75	75
Breed %			67GV 33AN			OWNER:			Duck River Gelbvieh					

Balancer Homo Black Homo Polled **170**
WNBE 333L

KCF BENNETT U271
 DLW ALUMNI 7513A ET
 DLW MS MATRON 802U

KCF BENNETT QUALITY FOCUSED
 DCSF POST ROCK TWILA 167A8
 DCSF POST ROCK TWILA 234Y2 ET

REG #:	1578639
BD:	9/9/2023
BW:	89
WW:	705

CE	BW	WW	YW	MK	TM	CEM	ST	DOC	CW	REA	MB	\$C	FPI	EPI
11	3.4	95	150	25	73	5	15	12	48	.76	.16	108.67	87.09	182.04
BREED PERCENTILE RANKING PER EPD														
80	>95	2	3	35	3	80	45	50	20	10	95	50	30	5
Breed %			67GV 33AN			OWNER:			Wannabe Stock Farm					

BALANCER BULLS

Balancer Homo Black Homo Polled **171**
TMGC SB Cactus 164L

TMMW DESTINATION 82Y
 BTBR SAGUARO 8111F ET
 JEB BCC MISS OBJECTIVE 41W

JGPG COPPERFIELD 904G
 TMGC SB CLAY HOTTIE 287J
 TMGC SB HILDA 130B

REG #:	1587945
BD:	9/11/2023
BW:	67
WW:	646

CE	BW	WW	YW	MK	TM	CEM	ST	DOC	CW	REA	MB	\$C	FPI	EPI		
16	-3.2	70	110	21	56	10	19	14	42	.41	.58	125.48	89.26	165.87		
BREED PERCENTILE RANKING PER EPD																
15	10	65	60	75	75	10	5	15	35	75	15	20	25	10		
Breed %		61GV 39AN			OWNER:		Stuecken Bros									

Balancer Black Polled **175**
GATS Gatson # Lucky Charms 341L

DCH HILLE D453
 GLM HASHTAG# H11
 GLM W55

VWF ZEUS Z10
 TMGC SB VENUS 153B
 TMGC SB SPLENDOR 327Z

REG #:	1579159
BD:	9/15/2023
BW:	92
WW:	699

CE	BW	WW	YW	MK	TM	CEM	ST	DOC	CW	REA	MB	\$C	FPI	EPI		
13	-0.1	85	132	26	68	7	19	16	46	.64	.29	131.84	87.92	170.84		
BREED PERCENTILE RANKING PER EPD																
50	60	10	15	25	15	45	5	2	25	25	70	10	30	10		
Breed %		72GV16AN 12AR			OWNER:		Gatson Gelbvieh									

Balancer Homo Black Homo Polled **172**
JEB BCC Black Balance 16L

CCRO CAROLINA LEVERAGE 3214A
 ERTL BARGAINING CHIP D677
 KCS BLACKBIRD 7707

BNG OVERTIME 23Y
 JEB BCC MS OVERTIME 8F
 JEB BCC MISS BALANCE 15A

REG #:	1593680
BD:	9/13/2023
BW:	72
WW:	568

CE	BW	WW	YW	MK	TM	CEM	ST	DOC	CW	REA	MB	\$C	FPI	EPI		
12	-0.7	79	118	25	64	7	19	12	46	.43	.69	128.86	93.26	140.66		
BREED PERCENTILE RANKING PER EPD																
65	45	25	40	35	30	45	5	50	25	70	5	15	10	30		
Breed %		47GV 53AN			OWNER:		Burbank Cattle Company									

Balancer Homo Black Homo Polled **176**
TMGC SB Civil War 177L

V A R DISCOVERY 2240
 JKG CIVIL WAR E92
 JKG LOTTIE C92

BTBR SAGUARO 8111F ET
 TMGC SB VERBENA 159J
 TMGC SB TRIBUTE 110G

REG #:	1587959
BD:	9/15/2023
BW:	72
WW:	673

CE	BW	WW	YW	MK	TM	CEM	ST	DOC	CW	REA	MB	\$C	FPI	EPI		
13	-0.6	83	130	20	61	9	20	11	28	.43	.41	143.45	89.28	142.38		
BREED PERCENTILE RANKING PER EPD																
50	50	15	20	80	45	15	3	75	80	70	40	3	20	25		
Breed %		56GV 41AN 3AR			OWNER:		Stuecken Bros									

Balancer Homo Black Homo Polled **173**
TMMW Mr Derecho 123L

DBRG WHIRLWIND 735E
 VRT LAZY TV DERECHO J660
 VRT LAZY TV WINNIE G133

STG MR MEDINA 51Y14
 TMMW MISS MEDINA 195D
 TMMW GRANITES MISS SALLY 66Y

REG #:	1591281
BD:	9/13/2023
BW:	75
WW:	643

CE	BW	WW	YW	MK	TM	CEM	ST	DOC	CW	REA	MB	\$C	FPI	EPI		
12	-1.4	73	110	26	62	6	13	12	26	.39	.16	93.76	78.28	188.08		
BREED PERCENTILE RANKING PER EPD																
65	30	50	60	25	40	65	70	50	85	75	95	80	75	3		
Breed %		63GV 37AN			OWNER:		Mulroy Farms LLC									

Balancer Homo Black Homo Polled **177**
DRGF 341L

GMF FORTUNE 616D
 HRZN H182
 HRZN E103

JEB BCC BLACK BALANCE 13D
 JEB MS BALANCE 992G
 JDKG MS DESIGN BALANCER 933U

REG #:	1601591
BD:	9/16/2023
BW:	66
WW:	591

CE	BW	WW	YW	MK	TM	CEM	ST	DOC	CW	REA	MB	\$C	FPI	EPI		
15	0.1	74	120	20	57	8	12	11	57	.91	.37	92.22	84.56	143.12		
BREED PERCENTILE RANKING PER EPD																
25	65	45	35	80	70	30	85	75	10	3	50	85	40	25		
Breed %		69GV 31AN			OWNER:		Duck River Gelbvieh									

Balancer Homo Black Homo Polled **174**
TMMW Mr Derecho 130L

DBRG WHIRLWIND 735E
 VRT LAZY TV DERECHO J660
 VRT LAZY TV WINNIE G133

DJZ FINAL ANSWER 8E
 TMMW MISS FINAL ANSWER 116J
 TMMW GOVENORS MISS TRISTA 13Y

REG #:	1591288
BD:	9/14/2023
BW:	72
WW:	622

CE	BW	WW	YW	MK	TM	CEM	ST	DOC	CW	REA	MB	\$C	FPI	EPI		
15	1.0	82	129	26	67	9	15	12	41	.56	.31	106.69	86.16	201.60		
BREED PERCENTILE RANKING PER EPD																
25	85	20	20	25	15	15	45	50	40	40	65	55	35	2		
Breed %		50GV 50AN			OWNER:		Mulroy Farms LLC									



BALANCER BULLS

Balancer Homo Black Homo Polled **178**
NGCC NG Cactus L91

BTBR SAGUARO 8111F ET
 TMGC SB CACTUS 52H
 TMGC SB BRIDGET 110D OF 2022/802U

NGCC LUCKY 063WC
 NGCC NG LOLA E891
 JOSH TRAVELER 890A

REG #:	1581814
BD:	9/16/2023
BW:	90
WW:	528

CE	BW	WW	YW	MK	TM	CEM	ST	DOC	CW	REA	MB	\$C	FPI	EPI
9	1.5	72	117	25	61	6	16	13	54	.87	.35	112.81	79.81	132.40
BREED PERCENTILE RANKING PER EPD														
95	90	55	45	35	45	65	30	30	10	4	55	40	65	35
Breed %	65GV 29AN 6XX		OWNER:		Narrow Gate Cattle									

Balancer ND Red Polled **181**
BRNS 380L

RAB BIEBER HARD DRIVE Y120
 DBRG MR HARD DRIVE 0175H ET
 DBRG MS WINTHROP 330A

BWF BRANDYWINE ZULU 215Z
 BWF BRANDYWINE BODICIA 4147B
 BWF BRANDYWINE URANIA 8131U

REG #:	1613505
BD:	9/18/2023
BW:	80
WW:	585

CE	BW	WW	YW	MK	TM	CEM	ST	DOC	CW	REA	MB	\$C	FPI	EPI
14	-0.3	70	104	21	56	7	11	16	18	.40	.30	80.15	80.54	95.18
BREED PERCENTILE RANKING PER EPD														
40	55	65	75	75	75	45	95	2	>95	75	70	95	65	75
Breed %	75GV 25AR		OWNER:		Burns Gelbvieh									

Balancer Homo Black Homo Polled **179**
JGPG Rebel Yell 3205L

JRI PROBITY 254D28
 TJB REBEL YELL 804F ET
 TJB ANISSA 921U ET

SEPT COPPERFIELD ET
 JGPG EMMA 758E
 EGL N449

REG #:	1591754
BD:	9/17/2023
BW:	68
WW:	688

CE	BW	WW	YW	MK	TM	CEM	ST	DOC	CW	REA	MB	\$C	FPI	EPI
13	0.3	65	101	22	54	7	19	15	40	.41	.50	128.52	79.49	126.32
BREED PERCENTILE RANKING PER EPD														
50	70	80	80	65	85	45	5	5	40	75	25	15	70	40
Breed %	47GV 53AN		OWNER:		JGP Gelbvieh									

Balancer Homo Black Homo Polled **182**
TMGC SB Lariat 280L

KHR 33A
 KCF BENNETT E158
 KCF MISS X593 B192

BARSTOW BANKROLL B73
 SB RITA 8187E
 CIRCLE A RITA 1422

REG #:	1588054
BD:	9/19/2023
BW:	74
WW:	555

CE	BW	WW	YW	MK	TM	CEM	ST	DOC	CW	REA	MB	\$C	FPI	EPI
13	-0.5	76	128	29	68	8	11	14	48	.85	.30	86.45	84.56	149.35
BREED PERCENTILE RANKING PER EPD														
50	50	40	20	10	15	30	95	15	20	5	70	90	40	20
Breed %	50GV 50AN		OWNER:		Stuecken Bros									

Balancer Homo Black Homo Polled **180**
RUR Cactus Jack 12L

TMMW DESTINATION 82Y
 BTBR SAGUARO 8111F ET
 JEB BCC MISS OBJECTIVE 41W

SKF DUNN OPTIMUS 031B
 MTB BCC MISS OPTIMUS 12E
 MTB BCC MISS ARNOLD 39C

REG #:	1592556
BD:	9/17/2023
BW:	62
WW:	613

CE	BW	WW	YW	MK	TM	CEM	ST	DOC	CW	REA	MB	\$C	FPI	EPI
16	-3.1	67	95	19	53	11	20	11	33	.43	.77	138.48	91.39	90.64
BREED PERCENTILE RANKING PER EPD														
15	10	75	90	85	85	3	3	75	65	70	2	5	15	80
Breed %	56GV 44AN		OWNER:		Rockin'-U-Ranch									

Balancer Homo Black Homo Polled **183**
TMMW Mr Exponential 146L

K C F BENNETT EXPONENTIAL
 DBRG MR EXPONENTIAL 1158J
 DBRG MS EXCLUSIVE 5179C ET

DCH HILLE STOCK OPTIONS D410
 TMMW MISS STOCK OPTIONS 191J
 TMMW MISS MONTANA 255E

REG #:	1591304
BD:	9/20/2023
BW:	64
WW:	651

CE	BW	WW	YW	MK	TM	CEM	ST	DOC	CW	REA	MB	\$C	FPI	EPI
16	1.1	92	150	24	71	8	15	12	55	1.04	.56	115.03	99.05	168.33
BREED PERCENTILE RANKING PER EPD														
15	85	3	3	45	5	30	45	50	10	1	15	35	3	10
Breed %	75GV 25AN		OWNER:		Mulroy Farms LLC									



Balancer Homo Black Homo Polled **184**
TMMW Mr Overtime 151L

BTBR SAGUARO 8111F ET
 JEB BCC BLACK BALANCE J101 ET
 JEB BCC MISS OVERTIME 54C

TMMW HOLE IN ONE 93D
 TMMW MISS HOLE IN ONE 193G
 TMMW MISS KRUGER 125Z

REG #:	1591309
BD:	9/22/2023
BW:	77
WW:	749

CE	BW	WW	YW	MK	TM	CEM	ST	DOC	CW	REA	MB	\$C	FPI	EPI
12	0.4	85	133	26	68	8	17	13	31	.57	.23	124.20	85.76	151.82
BREED PERCENTILE RANKING PER EPD														
65	70	10	15	25	15	30	20	30	70	40	85	20	35	20
Breed %	61GV 37AN 2AR		OWNER:		Mulroy Farms LLC									

BALANCER BULLS

Balancer Black Homo Polled **185**

TMGC SB Legend 273L

G A R HIGH SECURITY JSF
IAND DUNN'S SAFE CRACKER 090J
SKF DUNNS MISS JACKPOT 572C

BTBR SAGUARO 8111F ET
TMGC SB VERBENA 156H
TMGC SB SILENCE 264E

REG #:	1588047
BD:	9/23/2023
BW:	70
WW:	594

CE	BW	WW	YW	MK	TM	CEM	ST	DOC	CW	REA	MB	\$C	FPI	EPI
14	-1.6	79	125	23	62	8	18	13	48	.73	.74	126.35	97.61	170.26
BREED PERCENTILE RANKING PER EPD														
40	25	25	25	55	40	30	10	30	20	15	3	15	4	10
Breed %			56GV 41AN 3AR	OWNER:		Stuecken Bros								



Balancer Homo Black Homo Polled **186**

TMMW Mr Bank Heist 158L

BRNS SKF BURNS BANK HEIST 874F
SKF DUNN'S BANK HEIST 231J
SKF DUNNS MISS ZANDER 6D67

DMP F185
TMMW MISS ALLIED 150J
TMMW MISS BISMARCK 84A

REG #:	1591317
BD:	9/25/2023
BW:	80
WW:	705

CE	BW	WW	YW	MK	TM	CEM	ST	DOC	CW	REA	MB	\$C	FPI	EPI
10	1.2	74	116	26	64	7	16	13	43	.23	.56	103.69	84.86	47.48
BREED PERCENTILE RANKING PER EPD														
90	85	45	45	25	30	45	30	30	30	95	15	60	40	>95
Breed %			48GV 48AN 4AR	OWNER:		Mulroy Farms LLC								

Balancer Homo Black Homo Polled **189**

RDW 358L (DDC)

TMMW MR LEACHMAN SHIFT 141E
DJZ 61H
JEB BCC MISS BALANCE 54A

SKF DUNN OPTIMUS 031B
RDW 423D
RDW 198B

REG #:	1594299
BD:	9/28/2023
BW:	58
WW:	626

CE	BW	WW	YW	MK	TM	CEM	ST	DOC	CW	REA	MB	\$C	FPI	EPI
20	-1.9	68	107	32	66	10	18	12	29	.53	.62	124.31	90.62	171.99
BREED PERCENTILE RANKING PER EPD														
1	20	70	65	2	20	10	10	50	80	50	10	20	20	10
Breed %			46GV 54AN	OWNER:		Rex Wood Farms								

Balancer Black Homo Polled **187**

TMGC SB Cactus 193L

TMMW DESTINATION 82Y
BTBR SAGUARO 8111F ET
JEB BCC MISS OBJECTIVE 41W

CONNELLY IMPRESSION
TMGC SB IMPRESSION OF 61R 237E ET
TMGC 61R

REG #:	1587974
BD:	9/26/2023
BW:	66
WW:	740

CE	BW	WW	YW	MK	TM	CEM	ST	DOC	CW	REA	MB	\$C	FPI	EPI
16	-3.2	74	111	26	62	11	19	10	39	.82	.53	132.38	91.73	115.91
BREED PERCENTILE RANKING PER EPD														
15	10	45	60	25	40	3	5	90	45	10	20	10	15	55
Breed %			56GV 44AN	OWNER:		Stuecken Bros								

Balancer Homo Black Homo Polled **190**

TMGC SB Barcelona 240L

CCRO CAROLINA LEVERAGE 3214A
TMGC SB FORMULA 12E
TMGC SB DANIELLE 07C

TMGC SB SILENT NIGHTS 2005B
TMGC SB SILENCE 147F
TMGC SB MADONNA 259C

REG #:	1588013
BD:	9/30/2023
BW:	81
WW:	679

CE	BW	WW	YW	MK	TM	CEM	ST	DOC	CW	REA	MB	\$C	FPI	EPI
14	0.1	81	126	22	63	9	10	13	37	.91	.69	87.12	96.03	193.05
BREED PERCENTILE RANKING PER EPD														
40	65	20	25	65	35	15	>95	30	50	3	5	90	10	3
Breed %			61GV 39AN	OWNER:		Stuecken Bros								

Balancer Homo Black Homo Polled **188**

TMGC SB Legend 222L

G A R HIGH SECURITY JSF
IAND DUNN'S SAFE CRACKER 090J
SKF DUNNS MISS JACKPOT 572C

BTBR SAGUARO 8111F ET
TMGC SB VERBENA 154H
TMGC SB SILENCE 209E

REG #:	1587996
BD:	9/26/2023
BW:	72
WW:	735

CE	BW	WW	YW	MK	TM	CEM	ST	DOC	CW	REA	MB	\$C	FPI	EPI
16	-0.4	79	128	26	65	8	17	15	34	.66	.63	124.62	94.07	176.48
BREED PERCENTILE RANKING PER EPD														
15	50	25	20	25	30	20	5	60	25	10	20	10	10	10
Breed %			53GV 47AN	OWNER:		Stuecken Bros								

Balancer Homo Black Homo Polled **191**

TMMW Mr Exponential 176L

K C F BENNETT EXPONENTIAL
DBRG MR EXPONENTIAL 1158J
DBRG MS EXCLUSIVE 5179C ET

TMMW GRANITES MR CIM 50Y
TMMW MISS GRANITE 157A
TMMW KRUGERS MISS ERICA 261X

REG #:	1591334
BD:	10/3/2023
BW:	76
WW:	662

CE	BW	WW	YW	MK	TM	CEM	ST	DOC	CW	REA	MB	\$C	FPI	EPI
15	-0.9	74	112	23	61	9	17	14	40	.67	.51	114.84	87.79	111.74
BREED PERCENTILE RANKING PER EPD														
25	40	45	55	55	45	15	20	15	40	20	20	35	30	60
Breed %			50GV 50AN	OWNER:		Mulroy Farms LLC								

BALANCER BULLS



Balancer Homo Black Homo Polled **195**
LAW Mark 357L

DLW TPG JACKPOT 7551B ET
 BWF BRANDYWINE GUNNAR 942G
 BWF 208Z

ELLINGSON CHAPS 4095
 FHCC GEORGIA 0414
 FHCC GEORGIA 2503

REG #:	1583815
BD:	10/15/2023
BW:	85
WW:	676

CE	BW	WW	YW	MK	TM	CEM	ST	DOC	CW	REA	MB	\$C	FPI	EPI
8	1.2	69	118	26	60	4	17	13	36	.51	.50			80.57
BREED PERCENTILE RANKING PER EPD														
>95	85	65	40	25	50	95	20	30	55	55	25			65
Breed %		50GV 50AN			OWNER:					Lawman Farms				

Balancer Black Homo Polled **192**
TMMW Mr Exponential 181L

K C F BENNETT EXPONENTIAL
 DBRG MR EXPONENTIAL 1158J
 DBRG MS EXCLUSIVE 5179C ET

STG MR MEDINA 51Y14
 TMMW MISS MEDINA 127C
 TMMW MISS BISMARCH 151A

REG #:	1591339
BD:	10/6/2023
BW:	76
WW:	746

CE	BW	WW	YW	MK	TM	CEM	ST	DOC	CW	REA	MB	\$C	FPI	EPI
17	-1.4	77	117	28	67	8	8	14	57	.88	.63	73.04	94.61	158.48
BREED PERCENTILE RANKING PER EPD														
10	30	35	45	15	30	>95	15	10	4	10	>95	10	15	
Breed %		50GV 50AN			OWNER:					Mulroy Farms LLC				

Balancer Black Homo Polled **196**
MTB BCC Black Balance 62L

CCRO CAROLINA LEVERAGE 3214A
 ERTL BARGAINING CHIP D677
 KCS BLACKBIRD 7707

TMMW DESTINATION 82Y
 MTB BCC MS DESTINATION 811F ET
 JEB BCC MISS OBJECTIVE 41W

REG #:	1593723
BD:	10/19/2023
BW:	72
WW:	516

CE	BW	WW	YW	MK	TM	CEM	ST	DOC	CW	REA	MB	\$C	FPI	EPI
11	2.1	86	140	24	67	8	13	11	62	1.01	.62	103.69	93.57	178.53
BREED PERCENTILE RANKING PER EPD														
80	95	10	10	45	15	30	70	75	3	1	10	60	10	5
Breed %		53GV 47AN			OWNER:					Burbank Cattle Company				

Balancer Homo Black Homo Polled **193**
JEB BCC Black Balance 49L

BTBR SAGUARO 8111F ET
 JEB BCC JACKSMITH J109 ET
 JEB BCC MISS OBJECTIVE 54C

SCHIEFELBEIN EFFECTIVE 61
 JGPG VELVET 7203E
 JGPG VELVET 5105C

REG #:	1593710
BD:	10/8/2023
BW:	76
WW:	598

CE	BW	WW	YW	MK	TM	CEM	ST	DOC	CW	REA	MB	\$C	FPI	EPI
16	-0.4	83	123	23	65	8	18	12	51	.63	.47	125.40	91.01	169.52
BREED PERCENTILE RANKING PER EPD														
15	50	15	30	55	25	30	10	50	15	30	30	20	15	10
Breed %		48GV 50AN 2AR			OWNER:					Burbank Cattle Company				

Balancer Homo Black Scurred **197**
TMGC SB Peterbilt 304L

JKGF PAYWEIGHT G63 ET
 SKF DUNN'S LAZY PAYWEIGHT 276J
 SKF DUNNS MS WATCHMAN 508C

GSRT DEACON 908D
 TMGC SB DIVINE 205H
 HUTR JUSTAMERE SANDI

REG #:	1588077
BD:	10/23/2023
BW:	67
WW:	675

CE	BW	WW	YW	MK	TM	CEM	ST	DOC	CW	REA	MB	\$C	FPI	EPI
15	-2.0	66	102	26	59	9	18	11	22	.21	.55	129.87	84.99	118.65
BREED PERCENTILE RANKING PER EPD														
25	20	80	80	25	55	15	10	75	95	95	15	15	40	50
Breed %		75GV 25AN			OWNER:					Stuecken Bros				

Balancer Black Homo Polled **194**
RDW 377L KML

BVC MR BALANCE 516E
 LSR FLINT HILLS 47H
 RLS FOCUS ON GOVERNOR 39Y

JRI PD RESOURCE 197E51
 RDW LADY LUCK 301C
 SWTZ MS QUEEN OF HEARTS 29NRT

REG #:	1594266
BD:	10/13/2023
BW:	68
WW:	665

CE	BW	WW	YW	MK	TM	CEM	ST	DOC	CW	REA	MB	\$C	FPI	EPI
15	-1.9	66	100	26	60	7	15	11	17	.57	.29	99.39	80.06	138.88
BREED PERCENTILE RANKING PER EPD														
25	20	80	80	25	50	45	45	75	>95	40	70	70	65	30
Breed %		56GV 25AN 19AR			OWNER:					Rex Wood Farms				

Balancer ND Red Homo Polled **198**
JEB BCC Red Balance 69L

RAB BIEBER HARD DRIVE Y120
 GRU GOLDEN BOY 272G
 DCH HILLE C272

JEB BCC RED ZADE 31Z
 KDCM CKC MISS ZADE 149D
 JEB BCC MISS BALANCE 69A

REG #:	1593730
BD:	10/29/2023
BW:	72
WW:	636

CE	BW	WW	YW	MK	TM	CEM	ST	DOC	CW	REA	MB	\$C	FPI	EPI
10	2.4	74	122	29	66	7	17	14	23	.47	.44	119.73	82.83	83.19
BREED PERCENTILE RANKING PER EPD														
90	>95	45	30	10	20	45	20	15	90	60	35	25	50	85
Breed %		62GV 38AR			OWNER:					Burbank Cattle Company				

Balancer Homo Black Homo Polled **199**
WNBE 327L

SYDGEN ENHANCE
 MSHP SMOKEYS MOONSHINER
 MTB BCC MISS BALANCE 46A

REG #:	1582978
BD:	11/2/2023
BW:	88
WW:	685

KCF BENNETT QUALITY FOCUSED
 DCSF POST ROCK TWILA 173C8
 DCSF POST ROCK TWILA 49A2

CE	BW	WW	YW	MK	TM	CEM	ST	DOC	CW	REA	MB	\$C	FPI	EPI
10	1.4	96	152	25	74	5	13	15	60	.57	.55	96.66	97.62	167.84
BREED PERCENTILE RANKING PER EPD														
90	90	1	2	35	2	80	70	5	4	40	15	75	4	10
Breed %	36GV 64AN			OWNER:		Wannabe Stock Farm								

73% Gelbvieh Black Homo Polled **203**
CCFM 394L

TMGC SB FORMULA 12E
 TMGC SB DCN REVOLUTION 287G
 TMGC 213X

REG #:	1608352
BD:	10/12/2023
BW:	71
WW:	632

CTR SANDMAN 0103X
 CCFM 891F
 CCFM 353A

CE	BW	WW	YW	MK	TM	CEM	ST	DOC	CW	REA	MB	\$C	FPI	EPI
14	0.5	75	116	18	56	8	14	13	50	.64	.50			85.18
BREED PERCENTILE RANKING PER EPD														
35	70	35	35	90	70	25	60	25	10	35	20			30
Breed %	73GV 24AN 3XX			OWNER:		Chapuis Cattle Farm								

Balancer Homo Black Homo Polled **200**
JEB BCC Black Balance 73L

CCRO CAROLINA LEVERAGE 3214A
 ERTL BARGAINING CHIP D677
 KCS BLACKBIRD 7707

REG #:	1593734
BD:	11/3/2023
BW:	76
WW:	690

BNG OVERTIME 23Y
 JEB BCC MISS OVERTIME 23C
 CJSJ LUCILLE 1367Y ET

CE	BW	WW	YW	MK	TM	CEM	ST	DOC	CW	REA	MB	\$C	FPI	EPI
10	2.4	87	131	27	70	5	19	14	48	.84	.46	130.97	89.83	172.03
BREED PERCENTILE RANKING PER EPD														
90	>95	10	20	20	10	80	5	15	20	5	30	10	20	10
Breed %	47GV 53AN			OWNER:		Burbank Cattle Company								

77% Gelbvieh Homo Black Homo Polled **204**
TMGC SB Barcelona 228L

CCRO CAROLINA LEVERAGE 3214A
 TMGC SB FORMULA 12E
 TMGC SB DANIELLE 07C

REG #:	1588001
BD:	9/10/2023
BW:	81
WW:	583

JRI PROBITY 254D28
 TMGC SB PROBITY QUEEN 261G
 TMGC SB JACKPOT QUEEN 211E

CE	BW	WW	YW	MK	TM	CEM	ST	DOC	CW	REA	MB	\$C	FPI	EPI
14	0.3	97	148	20	69	8	13	12	57	.85	.34	103.22	95.08	187.30
BREED PERCENTILE RANKING PER EPD														
35	65	1	2	80	10	25	75	50	4	10	45	70	5	3
Breed %	77GV 23AN			OWNER:		Stuecken Bros								

Balancer Homo Black Homo Polled **201**
JEB BCC Black Balance 79L

CCRO CAROLINA LEVERAGE 3214A
 ERTL BARGAINING CHIP D677
 KCS BLACKBIRD 7707

REG #:	1593740
BD:	11/7/2023
BW:	74
WW:	669

TMMW DESTINATION 82Y
 MTB BCC MS DESTINATION 501E ET
 JEB BCC MISS OBJECTIVE 41W

CE	BW	WW	YW	MK	TM	CEM	ST	DOC	CW	REA	MB	\$C	FPI	EPI
14	-0.7	75	119	27	65	9	16	13	44	.58	.62	119.61	90.76	143.57
BREED PERCENTILE RANKING PER EPD														
40	45	40	40	20	25	15	30	30	30	40	10	25	20	25
Breed %	53GV 47AN			OWNER:		Burbank Cattle Company								

77% Gelbvieh ND Red Polled **205**
DRGF 356L

GGRR GILLY'S BERT F847
 SFGC MR HAWK 144J
 SFGC MS SECRET HAWK 844F

REG #:	1601560
BD:	9/27/2023
BW:	76
WW:	699

CJSJ 1860B
 NNR 33 RED ROCK
 NNR POST BLACK FACE 36A

CE	BW	WW	YW	MK	TM	CEM	ST	DOC	CW	REA	MB	\$C	FPI	EPI
12	2.1	76	118	22	60	5	17	13	50	.79	.19	117.19	76.60	137.37
BREED PERCENTILE RANKING PER EPD														
65	95	35	35	60	45	80	20	25	10	15	80	40	70	20
Breed %	77GV 17AN 6AR			OWNER:		Duck River Gelbvieh								

50% Gelbvieh Black Homo Polled **202**
DRGF 347L

DCH HILLE DAKOTA CRUSADER C337
 SKF DUNN'S HEAVY CRUSADE 102F
 SKF DUNN'S MISS QUIVIRA 081X

REG #:	1601592
BD:	9/18/2023
BW:	76
WW:	592

DRGF W1

CE	BW	WW	YW	MK	TM	CEM	ST	DOC	CW	REA	MB	\$C	FPI	EPI
12	0.4	70	109	31	66	7	12	14	56	1.15	.24			77.67
BREED PERCENTILE RANKING PER EPD														
65	65	60	55	2	15	45	85	15	5	1	70			65
Breed %	50GV 50XX			OWNER:		Duck River Gelbvieh								

81% Gelbvieh Homo Black Homo Polled **206**
KZC L164

SPFR 204Z
 KZC E71
 ABF 2207Z

REG #:	1612235
BD:	8/8/2023
BW:	82
WW:	601

RLS REGULAR STANDARD 321A ET
 KZC D141
 JRI MS ASHLEY 270L513

CE	BW	WW	YW	MK	TM	CEM	ST	DOC	CW	REA	MB	\$C	FPI	EPI
12	0.4	68	94	26	60	6	9	16	27	.63	.21	66.41	74.71	115.94
BREED PERCENTILE RANKING PER EPD														
65	65	65	85	25	45	60	>95	2	75	35	75	>95	80	40
Breed %	81GV 19AN			OWNER:		KZ Cattle Company								

About Gelbvieh Bulls

Each of the Gelbvieh bulls is listed separately in the catalog with their own individual performance and pedigree information. They are all registered with the American Gelbvieh Association. The EPD's are the most current provided by the Gelbvieh Assoc.

The Average EPD's for Gelbvieh bulls as of 1/14/25:
 CE:13 BW: 0.0 WW: 71 YW: 105 MK: 23 TM: 58
 CEM: 7 ST: 16 DOC: 12 CW: 29 REA: 0.66
 MB: 0.22 \$C: 116.56 FPI: 77.24 EPI: 84.63

PB Gelbvieh Homo Black Homo Polled 210

GMF 350L
 CCRO CAROLINA LEVERAGE 3214A
 WAHL 004H ET
 FHG FLYING H MS LEGACY 48Y
 CTR JACKPOT 6C ET
 GMF MENG 810F
 GMF MENG 211Z

REG #:	1585491
BD:	8/12/2023
BW:	82
WW:	620

CE	BW	WW	YW	MK	TM	CEM	ST	DOC	CW	REA	MB	\$C	FPI	EPI	
13	-1.5	66	99	31	64	10	18	9	44	92	27	132.52	78.51	81.85	
13BREED PERCENTILE RANKING PER EPD															
45	20	70	65	2	20	3	20	95	10	10	35	25	45	55	
Breed %		94GV 6AN			OWNER:					Meng Farms Cattle Company					

PB Gelbvieh Homo Black Homo Polled 207

SKF Dunn's Exclusive Destiny 045L ET
 TMMW DESTINATION 82Y
 SKF DUNN'S DESTINY 056F
 SKF DUNN'S MS GOVENORESS 5C28
 FHG FLYING H EXCLUSIVE
 SKF DUNN'S MISS EXCLUSIVE 756E ET
 SKF DUNN'S MISS SANDY 166Y

REG #:	1574155
BD:	2/1/2023
BW:	ET
WW:	ET

CE	BW	WW	YW	MK	TM	CEM	ST	DOC	CW	REA	MB	\$C	FPI	EPI	
14	1.2	72	118	22	58	11	22	9	26	.50	.85	171.61	92.86	144.36	
BREED PERCENTILE RANKING PER EPD															
30	80	45	20	60	55	1	1	95	65	85	1	1	2	3	
Breed %		94GV 6AN			OWNER:					Sandy Knoll Farm					

PB Gelbvieh Black Homo Polled 211

CCFM 363L
 TMGC SB FORMULA 12E
 TMGC SB DCN REVOLUTION 287G
 TMGC 213X
 RWG ZENO 250Z
 CCFM 518C
 CCFM 303A

REG #:	1608347
BD:	8/25/2023
BW:	76
WW:	591

CE	BW	WW	YW	MK	TM	CEM	ST	DOC	CW	REA	MB	\$C	FPI	EPI	
16	-1.5	64	94	22	54	10	15	12	33	.68	.63	111.34	85.95	101.07	
BREED PERCENTILE RANKING PER EPD															
10	20	80	80	60	75	3	60	45	35	45	1	65	15	30	
Breed %		85GV 9AN 6XX			OWNER:					Chapuis Cattle Farm					

PB Gelbvieh Black Polled 208

LAW Zia Business 325L
 TMGC SB GOOD BUSINESS 143B
 SKF DUNN'S REGULAR BUSINESS 149F
 SKF DUNNS MISS GOVENOR 136Y
 KCF BENNETT S30
 BWF BRANDYWINE ZIA 236Z
 BWF BRANDYWINE URANIA 894U

REG #:	1583649
BD:	7/15/2023
BW:	70
WW:	576

CE	BW	WW	YW	MK	TM	CEM	ST	DOC	CW	REA	MB	\$C	FPI	EPI	
11	0.7	66	98	23	56	7	14	12	21	.36	.28	104.45	74.67	36.34	
BREED PERCENTILE RANKING PER EPD															
75	65	70	70	50	35	70	45	80	95	35	80	65	95		
Breed %		99.9GV			OWNER:					Lawman Farms					

PB Gelbvieh Homo Black Homo Polled 212

DRGF 323L
 DDGR RESILIENT 275D
 GMF 034H
 GMF MENG 57C
 DMP D610
 DRGF 813F
 JEB DR BCC MISS BALANCE 201C

REG #:	1601581
BD:	9/8/2023
BW:	69
WW:	653

CE	BW	WW	YW	MK	TM	CEM	ST	DOC	CW	REA	MB	\$C	FPI	EPI	
11	0.3	86	139	26	69	7	20	14	29	.61	.31	137.00	89.38	128.01	
BREED PERCENTILE RANKING PER EPD															
75	55	4	2	25	4	35	4	10	50	65	25	15	4	10	
Breed %		94GV 6AN			OWNER:					Duck River Gelbvieh					

PB Gelbvieh Homo Black Homo Polled 209

GMF 326L
 CCRO CAROLINA LEVERAGE 3214A
 WAHL 004H ET
 FHG FLYING H MS LEGACY 48Y
 CTR HIGHLIGHT 066K
 GMF MENG 26Z
 GMF MENG 934W

REG #:	1585486
BD:	7/26/2023
BW:	88
WW:	675

CE	BW	WW	YW	MK	TM	CEM	ST	DOC	CW	REA	MB	\$C	FPI	EPI	
9	0.0	74	109	32	69	5	21	9	26	.23	.58	149.23	87.04	75.09	
BREED PERCENTILE RANKING PER EPD															
95	50	35	40	1	4	75	2	95	65	>95	2	5	10	65	
Breed %		94GV 6AN			OWNER:					Meng Farms Cattle Company					

PB Gelbvieh Black Homo Polled 213

GATS Gatson Stk Opt Linguistics 329L
 CCRO CAROLINA LEVERAGE 3214A
 DCH HILLE STOCK OPTIONS D410
 DCH HILLE B189 ET
 JNCC DIRECT DRIVE 590C
 GAT GATSON DIRECT DR FREDA 807F
 GATS GATSON ANCHORAGE DARLA 626D

REG #:	1578684
BD:	9/11/2023
BW:	73
WW:	557

CE	BW	WW	YW	MK	TM	CEM	ST	DOC	CW	REA	MB	\$C	FPI	EPI	
17	-2.4	80	115	23	62	10	20	14	38	.50	.30	146.55	88.07	118.99	
BREED PERCENTILE RANKING PER EPD															
5	10	15	25	50	30	3	4	10	20	85	30	10	10	15	
Breed %		88GV 12AN			OWNER:					Gatson Gelbvieh					

GELBVIEH BULLS

PB Gelbvieh Black Homo Polled **214**
GMF 366L ET

CCRO CAROLINA LEVERAGE 3214A
 JKGf CHIEF JUSTICE C205
 KCF MISS FORTUNE U490
 MCCA CORNHUSKER RED 524C
 MCCA FEBE 815F
 MCCA BEBE 41015B

REG #:	1593401
BD:	9/13/2023
BW:	ET
WW:	ET

CE	BW	WW	YW	MK	TM	CEM	ST	DOC	CW	REA	MB	\$C	FPI	EPI
17	-1.8	72	107	24	60	10	19	9	26	.57	.67		92.98	
BREED PERCENTILE RANKING PER EPD														
5	15	45	45	40	40	3	10	95	65	70	1		2	
Breed %	94GV 6AN		OWNER:		Meng Farms Cattle Company									

PB Gelbvieh Homo Black Homo Polled **218**
TMMW Mr Stock Options 199L

CCRO CAROLINA LEVERAGE 3214A
 DCH HILLE STOCK OPTIONS D410
 DCH HILLE B189 ET
 TMMW HOLE IN ONE 93D
 TMMW MISS HOLE IN ONE 101H1
 TMMW MISS MEDINA 32C

REG #:	1591360
BD:	10/30/2023
BW:	73
WW:	698

CE	BW	WW	YW	MK	TM	CEM	ST	DOC	CW	REA	MB	\$C	FPI	EPI
12	0.9	95	147	27	75	7	16	16	41	95	.06	127.88	87.79	170.37
BREED PERCENTILE RANKING PER EPD														
60	70	1	1	15	1	35	45	2	10	5	90	30	10	1
Breed %	85GV 15AN		OWNER:		Mulroy Farms LLC									

PB Gelbvieh Homo Black Scurred **215**
DRGF 335L

DDGR RESILIENT 275D
 GMF 034H
 GMF MENG 57C
 ZJC HOSS 30W ET
 DRGF 245Z
 GPE MISS EXCEPTIONAL 5L

REG #:	1601555
BD:	9/15/2023
BW:	68
WW:	650

CE	BW	WW	YW	MK	TM	CEM	ST	DOC	CW	REA	MB	\$C	FPI	EPI
16	-0.8	75	115	27	65	8	16	15	32	.71	.38	110.16	86.44	109.56
BREED PERCENTILE RANKING PER EPD														
10	30	30	25	15	15	20	45	4	35	40	15	70	10	25
Breed %	88GV 12AN		OWNER:		Duck River Gelbvieh									

PB Gelbvieh Homo Black Homo Polled **219**
TMMW Mr Stock Options 206L

CCRO CAROLINA LEVERAGE 3214A
 DCH HILLE STOCK OPTIONS D410
 DCH HILLE B189 ET
 TMMW GOVENORS MR EXTRA 6018W
 TMMW MISS GOVENOR 148A
 OZZ 36T

REG #:	1591367
BD:	11/6/2023
BW:	74
WW:	820

CE	BW	WW	YW	MK	TM	CEM	ST	DOC	CW	REA	MB	\$C	FPI	EPI
13	0.9	90	129	23	68	8	18	14	32	97	.20	135.50	87.33	118.70
BREED PERCENTILE RANKING PER EPD														
45	70	2	10	50	10	20	20	10	35	4	55	20	10	15
Breed %	91GV 9AN		OWNER:		Mulroy Farms LLC									

PB Gelbvieh Homo Black Homo Polled **216**
LAW Ziw's Gunnar 344L

DLW TPG JACKPOT 7551B ET
 BWF BRANDYWINE GUNNAR 942G
 BWF 208Z
 WNBE 447B
 WNBE ZIWANEE 831F
 JEB ZINIA 400Z ET

REG #:	1582396
BD:	9/16/2023
BW:	88
WW:	755

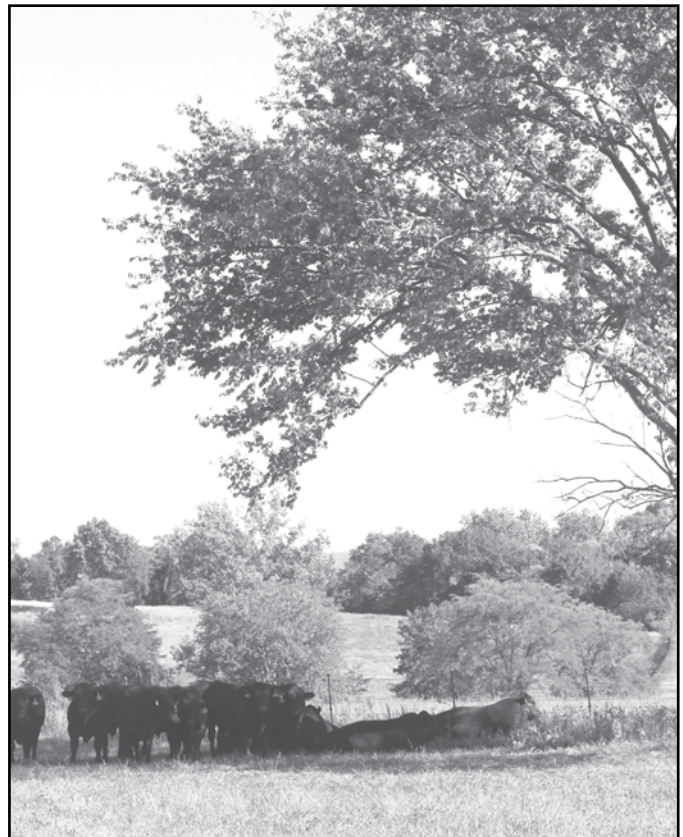
CE	BW	WW	YW	MK	TM	CEM	ST	DOC	CW	REA	MB	\$C	FPI	EPI
8	2.0	79	130	25	65	4	15	13	37	.65	.38	109.06	83.44	93.40
BREED PERCENTILE RANKING PER EPD														
>95	90	20	5	30	15	90	60	25	20	55	15	70	20	40
Breed %	91GV 9AN		OWNER:		Lawman Farms									

PB Gelbvieh ND Red Homo Polled **217**
JEB BCC Red Landon 64L

BNC AT EASE A357
 BNW PLAINSMAN JUBAL 1104J
 BNW DESERT ROSE 9001G
 JEB BCC RED ZADE 31Z
 KDCM MISS ZADE 117D
 MTB BCC MO PROSPECT 5X

REG #:	1593725
BD:	10/21/2023
BW:	74
WW:	649

CE	BW	WW	YW	MK	TM	CEM	ST	DOC	CW	REA	MB	\$C	FPI	EPI
14	1.0	79	124	33	72	9	21	7	37	.61	.54	141.67	90.32	76.76
BREED PERCENTILE RANKING PER EPD														
30	75	20	10	1	2	10	2	>95	20	65	3	10	4	60
Breed %	93GV SAR 2AN		OWNER:		Burbank Cattle Company									



Additional Bulls Selling:

This will be the fifth year of having the Brangus offering from Southern Arkansas University. These bulls come from the University Beef Farm's registered Brangus herd. They have been developed at the University farm with the involvement of students in a teaching environment.

Seedstock Plus is pleased to help the University market these registered Brangus bulls. There will be videos available on these bulls. They were semen checked and trich tested as well. They sell under the same terms and conditions as the Seedstock Plus bulls.

About Brangus Bulls

Registered Brangus bulls are 3/8 Brahman/Zebu and 5/8 Angus. The Foundation parents from both breeds must be registered and recorded with IBBA. The Brangus bull is a popular choice with commercial producers - especially those in an adverse environment as the Brahman influence excels in disease and pest resistance as well as heat tolerance.

The average EPD's for Brangus bulls as of 1/18/2025 are:

CE: 5.00 BW: 0.35 WW: 20 YW: 40 Milk: 8.5 TM: 19
CEM: 3.5 ST: 1.8 REA: 0.21 IMF: 0.08 Fat: 0.005 Term: 1.83 Fert: 3.85

Additional EPD Definitions (the rest are on page 3 About the Catalog):

IMF: Intra-muscular fat - expressed as a fraction of the difference in marbling score compared to other sires.

Fat: expressed in inches and is a predictor of differences in external fat

Terminal Index: a blended EPD combining traits for positive carcass value.

Fertility Index: a blended EPD combining traits for maternal characteristics including WW, Milk, Stayability, HF Preg & Mature Cow Weight.

Brangus

SAU 311L

HENDERSON OF BRINKS 3057
SCC ROBERT'S PASSPORT 409U3
SUNNY SHAQ 409/3

001C TRINITY
SAU 604K
SAU 002C

REG #:	10524006
BD:	2/8/2023
BW:	71
WW:	604

CE	BW	WW	YW	MK	TM	CEM	ST	REA	IMF	FAT	TERM	FERT
5.5	-0.3	15	29	15	23	3.94	.57	.09	.04	-.002	1.38	3.07
BREED PERCENTILE RANKING PER EPD												
50	35	70	80	10	30	35	95	75	60	30	70	80
Breed %	100BN	OWNER:		Southern Arkansas University								



Brangus

SAU 318L

SUHN'S MAJESTIK BEACON 30C
SAU 008H
SAU 604K
DMR ELDORADO 30815
SAU 902G
SAU 905B

REG #:	10524013
BD:	2/19/2023
BW:	73
WW:	531

CE	BW	WW	YW	MK	TM	CEM	ST	REA	IMF	FAT	TERM	FERT
8	-1.3	10	27	2	8	3.39	1.93	.11	.04	.002	1.19	3.79
BREED PERCENTILE RANKING PER EPD												
15	20	85	80	95	>95	60	50	70	60	45	75	55
Breed %	100BN	OWNER:		Southern Arkansas University								

Brangus

SAU 319L

SUHN'S MAJESTIK BEACON 30C
SAU 008H
SAU 604K
DMR LOUISIANA PURCHASE 924D10
SAU 127J
SAU 905G

REG #:	10524014
BD:	2/19/2023
BW:	66
WW:	594

CE	BW	WW	YW	MK	TM	CEM	ST	REA	IMF	FAT	TERM	FERT
8.2	-1.7	11	26	7	13	3.38	2.45	.16	-.02	.005	1.1	4.27
BREED PERCENTILE RANKING PER EPD												
15	15	85	85	70	85	60	35	60	80	50	80	35
Breed %	100BN	OWNER:		Southern Arkansas University								

Brangus

SAU 320L

SUHN'S MAJESTIK BEACON 30C
SAU 008H
SAU 604K
001C TRINITY
SAU 014H
SAU 008C

REG #:	10524015
BD:	2/22/2023
BW:	77
WW:	634

CE	BW	WW	YW	MK	TM	CEM	ST	REA	IMF	FAT	TERM	FERT
5.7	-0.1	13	36	13	20	3.61	1.49	.14	-.01	.003	1.5	3.48
BREED PERCENTILE RANKING PER EPD												
45	45	80	60	15	45	50	65	65	75	45	65	65
Breed %	100BN	OWNER:		Southern Arkansas University								

Brangus

SAU 321L

DMR THE CHAIRMAN 415A11
SAU 724L
SAU 510J
001C TRINITY
SAU 613K
SAU 937B

REG #:	10524016
BD:	2/23/2023
BW:	71
WW:	561

CE	BW	WW	YW	MK	TM	CEM	ST	REA	IMF	FAT	TERM	FERT
7.4	-1.3	-1	16	16	16	3.13	1.06	.08	.02	.000	.84	3.46
BREED PERCENTILE RANKING PER EPD												
20	20	>95	95	5	70	70	80	75	70	35	90	65
Breed %	100BN	OWNER:		Southern Arkansas University								

221

222

220

223

224

BRANGUS BULLS

Brangus

SAU 323L

TJM MAIN EVENT 59C10
SAU 805M
SAU 008C

JBM GRIESE 65B2
SAU 923G
SAU 417H

225

REG #:	10524018
BD:	2/24/2023
BW:	75
WW:	638

CE	BW	WW	YW	MK	TM	CEM	ST	REA	IMF	FAT	TERM	FERT
6.4	-1.0	19	45	14	24	3.98	1.25	.17	-.01	.001	2.03	3.40
BREED PERCENTILE RANKING PER EPD												
35	20	60	45	10	25	35	75	60	75	40	45	70
Breed %	100BN		OWNER:				Southern Arkansas University					

Brangus

SAU 331L

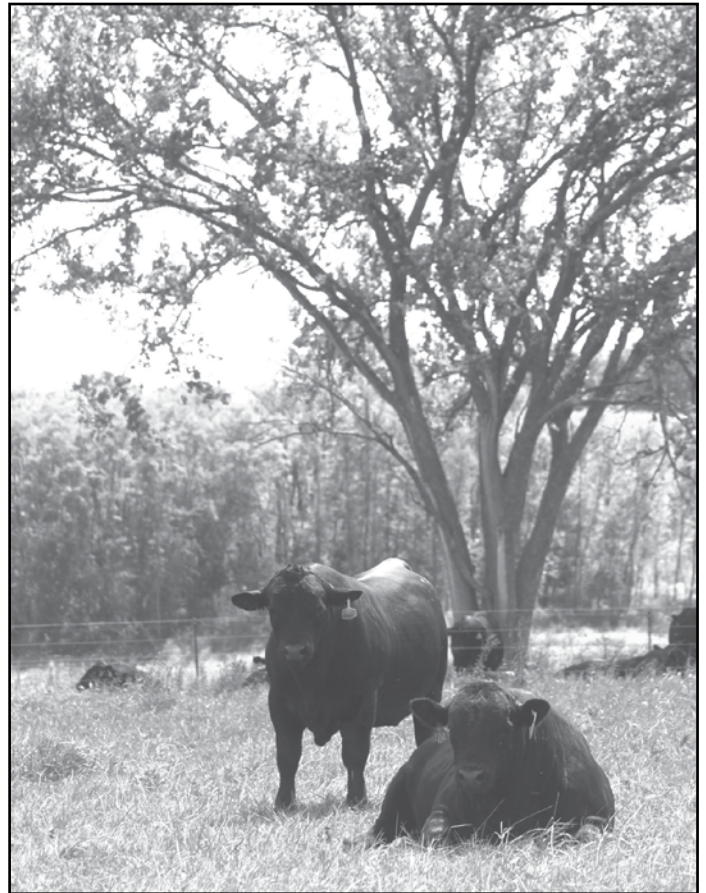
SUHN'S MAJESTIK BEACON 30C
SAU 008H
SAU 604K

SUHN'S MAJESTIK BEACON 30C
SAU 022H
SAU 406H

226

REG #:	10524129
BD:	2/28/2023
BW:	77
WW:	580

CE	BW	WW	YW	MK	TM	CEM	ST	REA	IMF	FAT	TERM	FERT
4.0	0.6	23	54	5	17	3.16	2.01	.21	-.03	.006	2.10	3.58
BREED PERCENTILE RANKING PER EPD												
70	65	45	25	85	65	65	45	55	85	55	45	60
Breed %	100BN		OWNER:				Southern Arkansas University					



Brangus

SAU 342L

TJM MAIN EVENT 59C10
SAU 805M
SAU 008C

DMR THE CHAIRMAN 415A11
SAU 721L
SAU 319G

227

REG #:	10524138
BD:	3/11/2023
BW:	77
WW:	596

CE	BW	WW	YW	MK	TM	CEM	ST	REA	IMF	FAT	TERM	FERT
6.9	-1.0	10	20	10	16	3.15	1.47	.18	.02	.000	.99	3.61
BREED PERCENTILE RANKING PER EPD												
30	20	85	95	35	70	65	65	60	70	35	85	60
Breed %	100BN		OWNER:				Southern Arkansas University					



Four States Classic
SPRING TURNOUT
SATURDAY, APRIL 19, 2025
1 P.M. AT HOPE LIVESTOCK
HOPE, ARKANSAS

*Replacement
Female Sale*



VIEW CONSIGNED CATTLE AT
LBJCATTLE.COM
Updates made daily

*Selling over 500 of the
finest commercial females
in the Four States Area!*

CONTACT

Lanny Ford, 870.703.4345
Bart Emerson, 870.904.6671
Jeff Milam, 870.703.0716

Terms & Conditions

Terms: Terms of the sale are cash or personal check unless satisfactory credit arrangements have been made with the seller previous to the sale.

Bidding: All animals sell to the highest bidder. Any disputes or challenges regarding bids shall be settled by the auctioneer and his decision shall be final. Mailed or telephoned bids will be handled with the strictest confidence.

Registrations & Transfers: Each animal which is offered and sold has a certificate of registry available at the time of sale. The seller is responsible for the proper transfer of the certificate to the purchaser including full payment of transfer fees.

Purchaser's Risk: Each animal becomes the property of and therefore is also the risk of the purchaser as soon as it is sold.

Announcements: Any errors or changes in information contained in the catalog will be announced from the auction block. Such announcements shall take precedence over information contained herein.

Rights and Obligations: The above terms and conditions of sale constitute a contract between the buyer and seller of each animal and shall be equally binding to both. Animals resold following purchase in this sale shall constitute a separate transaction and the rights and obligations of the parties connected thereto are not covered by the above terms and conditions of this sale. Neither the host farm, auctioneers, nor any other person connected with the management or conduct of this sale assumes any liability, legal or otherwise, except as set forth above.

DEFINITIONS AND GUARANTEES

HORNED: An animal with a horn growth affixed to the skull that has or has not been removed.

POLLED/SCURRED: An animal with rudimentary horn growth that will not develop into a horn. The rudimentary horn growth may or may not become affixed to the skull at an older age.

POLLED: An animal with absence of horn growth (An animal can have scurs and still be genetically polled)

DOUBLE POLLED: An animal whose sire and dam are both polled or scurred, this gives this animal the possibility of being homozygous polled for the polled trait but it is not yet proven so.

HOMOZYGOUS POLLED: An animal who carries two polled genes, and will produce polled or polled/scurred offspring with every mating.

DILUTER GENE: A gene carried by some Gelbvieh cattle that affects the degree of red color in the hair coat. Bulls carrying this gene can produce gray calves when mated to black cows or cream colored calves when mated to each other.

DILUTER FREE: All Red Angus are free of the diluter gene as are all red Gelbvieh cattle resulting from a double black mating. Red Gelviesh can also be proven diluter-free by mating to black cows and producing all red or black offspring

DOUBLE BLACK: An animal whose sire and dam are both black, which give the animal the possibility of being homozygous for the black trait but its not yet proven so.

HOMOZYGOUS BLACK: An animal who carries two black genes and has been proven by mating or genetically tested to produce black or black factor (gray when mated with diluter-based genetics) calves with every mating.

For more information contact: Seedstock Plus Toll Free at: 877-486-1160 or John on his cell: 660-734-1165 or visit the website: www.seedstockplus.com

Seedstock Plus Sale Calendar

North Missouri Bull Sale

February 22, 2025

125 Balancer & Gelbvieh Bulls - all Black!
Kingsville Livestock, Kingsville, MO

Arkansas Bull Sale

March 1, 2025

75 Angus, Brangus, Gelbvieh
& Balancer Bulls - Red & Black!
Hope Livestock Auction, Hope, AR

Red Reward Bull & Heifer Sale

March 8, 2025

50 Red Gelbvieh & Balancer Bulls
Plus! Red Comm & Registered Females
Wheeler Livestock, Osceola, MO

South Missouri Bull & Female Sale

March 22, 2025

125 Balancer & Gelbvieh Bulls - all Black!
Plus! Black Comm & Registered Open Heifers
Joplin Regional Stockyards, Carthage, MO

Keep Your Mind in the Market

Volatile commodity markets and the speed at which narrow windows of opportunity to manage risk open and close underscore the value of keeping your mind engaged in the market, no matter how frequently you trade cattle.

That's why Seedstock Plus continues to offer as a free service to its customers and members a complimentary subscription to the daily Cattle Current electronic newsletter. It offers a convenient snapshot of the previous day's cash and futures markets for calves, feeders, fed cattle and related commodities. You'll also find pertinent market-related news.

If you're not receiving Cattle Current, or if you'd like to receive it at more than one e-mail address, please let us know and we'll add you to the list. You can send your request to wes@cattlecurrent.com.

Working Together for Industry Excellence



Seedstock Plus

18864 Kepler Dr.

St. Catharine, MO 64628

RETURN SERVICE REQUESTED

FIRST CLASS MAIL

