

*Seedstock Plus Arkansas  
Bull Sale*

*March 2, 2024 \* 1 p.m.*

*Hope Livestock Market  
Hope, Arkansas*

***ALL BULLS SELL WITH GENOMIC-ENHANCED EPDS!  
ALL ARE SIRE VERIFIED, COAT COLOR & POLLED TESTED!***



Working Together for Industry Excellence

S+

**Seedstock Plus**

*Bid & Buy at:*

**DVAuction**

# Seedstock Plus Arkansas Bull Sale

Saturday March 2, 2024 \* 1 p.m \*

## Hope Livestock Auction, Hope, AR

### Marketing Partnership

#### LBJ Cattle Marketing Inc.

353 Hempstead 4  
Hope, AR 71801

Lanny Ford: 870-703-4345  
Bart Emerson: 870-904-6671  
Jeff Milan: 870-703-0716

**Driving Directions:** For those of you with a GPS - the street address is 2105 West 3rd St, Hope, AR 71801.

Exit 30 off of I-30 (US 278/Hervey St) go south on Hervey St. Turn right on 3rd St. Sale barn is on the left.

#### Accommodations:

All 3 hotels are at Exit 30 off I-30 in Hope.  
In front of Walmart

**Holiday Inn Express**  
870-722-6262

**Hampton Inn**  
870-777-4567

**Best Western**  
870-777-9222

### Seedstock Plus Customer Service Programs

#### Guaranteed Sight-Unseen Purchases

**Free Delivery on bulls**  
or \$100 Discount if picked up sale day

#### Bull Warranty Program

Bulls are guaranteed for Fertility, Structure and Disposition. For an additional 5% of purchase price, bull can be warrantied for injury and death for 6 months.

#### Marketing Assistance Program

- Feeder Calves
- Replacement Females
- Bred Heifers, Cows and Pairs

If you need additional information on a particular program, call us at the Seedstock Plus office.

#### Health

**Seedstock Plus Bulls have been tested and found negative for PI BVD.** We recommend producers purchase only bulls that are negative for Persistent Infected BVD Virus. **Bulls are also tested NEGATIVE for Trichomoniasis.** This is not mandated by every state yet but some states are requiring it and we felt it best to be on top of that. The bulls have been vaccinated and boosted with IBR, BVD, PI-3, BRSV-4, Black-leg & Vibrio Lepto. They have been on a regular de-worming schedule since weaning. All the bulls have passed a breeding soundness exam that includes live semen evaluation, palpation, extension and scrotal measurement. All the necessary health tests have been performed and interstate health papers will be available sale day.

# Seedstock Plus Arkansas Bull Sale

March 2, 2024\* 1 p.m.

Hope Livestock Auction, Hope AR

Sale Day phone: 870-777-4451

John Burbank cell: 660-734-1165

LBJ Cattle Marketing: Lanny Ford: 870-703-4345

Bart Emerson: 870-904-6671

Jeff Milam: 870-703-0716

Lakin Oakley, Auctioneer..... 903-277-9610

## Selling: 80 - Angus, Balancer, Gelbvieh & Brangus Bulls

### About the Bulls:

- Prior to delivery to the test, bulls are sorted and culled at home
- Bulls are culled again prior to catalog for poor gain, conformation, disposition, etc.
- All bulls have passed a thorough breeding soundness exam prior to the sale
- All bulls are tested Negative for BVD -PI3 & Trichomoniasis
- All bulls have genomically enhanced EPDs and are Sire Verified.
- All Gelbvieh & Balancer bulls are Polled and Coat Color tested.
- The bulls are Guaranteed 'Free' of the currently known Genetic Defects we can test for.
- Frame scores & scrotal measurements will be available on a supplement sheet on sale day.
- EPDs update weekly so there will be updated EPDs, Tenderness scores, frame scores & scrotal measurements available on a supplement sheet early the week of the sale.
- **EPDs ARE CURRENT AS OF 1/16/2024**



We are planning to video each of the bulls on February 15<sup>th</sup> - after they have been semen checked and clipped. The videos will be posted during the following week and will be available to view by February 24<sup>th</sup>. If you would like to see a video of a specific bull and have access to high speed internet - you can go to our website or [www.dvauction.com](http://www.dvauction.com) and download the videos by the bull's LOT #.

### Internet Bidding:

The sale will be available to watch and bid real time at [www.dvauction.com](http://www.dvauction.com)

1. Create an account under the 'create new account' tab.

2. Apply for bidding by clicking 'apply for bidding' in the upper left corner of the screen. **AT LEAST 24 HOURS PRIOR TO THE SALE!**

3. Tune in to the sale to make your purchases!

Working Together for Industry Excellence



**Seedstock Plus**

John E. Burbank, CEO

18864 Kepler Dr.

St. Catharine, MO 64628

Toll Free: 877-486-1160 or

cell: 660-734-1165

email: [john@seedstockplus.com](mailto:john@seedstockplus.com)

[www.seedstockplus.com](http://www.seedstockplus.com)



# *Industry Commitment*

*The bulls included in this offering come from producers who are in the Seedstock business for the long haul. They raise the kind of bulls that produce the type of feeder calves that feed well and grade and yield on the rail. These are the kind of bulls that produce the replacement heifers that make our commercial customers so successful. Feel free to contact any of the members listed below if you have questions.*

**4 W Farms**

Contact: Brycen Wiedmer  
Troy, KS  
816-262-4172

**Hebron Ranch**

Contact: Daniel Bell  
Olaton, KY  
270-274-1749

**Nelson Ranch**

Contact: Jerry Nelson  
Soldier, KS  
785-364-6183

**Sandy Knoll Farm Gelbvieh**

Contact: Brian L Dunn  
St. John, KS  
620-786-4039

**Bryce Family Farms LLC**

Contact: Bryce Cripps  
Columbia, MO  
573-808-4742

**Horizon Farms**

Contact: Ed Laverentz  
Cheney, KS  
316-990-5088

**Norwood Gelbvieh**

Contact: Jerry Norwood  
Carthage, MO  
417-850-1023

**Simmons Cattle Company**

Contact: Robert Simmons  
Raymore, MO  
816-266-6482

**Burbank Cattle Company**

Contact: Matt Burbank  
St. Catharine, MO  
660-734-2739

**JGP Gelbvieh**

Contact: Josh Phillips  
Lathrop, MO  
816-914-6053

**Pecan Ridge Gelbvieh**

Contact: Jaron Franks  
Albertville, AL  
256-426-3782

**Springhaven Farm LLC**

Contact: Ken Anderson  
Belton, MO  
816-506-7947

**Burns Gelbvieh**

Contact: Jesse Burns  
Covington, OH  
937-606-4861

**KZ Cattle Company**

Contact: Kerry Zillinger  
Columbus, KS  
785-543-7614

**Pederson Gelbvieh**

Contact: David Pederson  
Buffalo, MN  
320-333-2014

**Stuecken Brothers**

Contact: Derek Stuecken  
Freeburg, MO  
573-690-8543

**Chapuis Cattle Company**

Contact: Charlie Chapuis  
Louisiana, MO  
573-754-5164

**Lawman Farms**

Contact: Kathleen Merritt  
Columbia, MO  
419-439-3730

**Reinert Family Farm**

Contact: John Reinert  
Billings, MO  
417-224-7204

**Wannabe Stock Farm**

Contact: Gregory Summers  
Smithville, MO  
816-392-5242

**Double V Farms**

Contact: Vince Mariani  
Warrensburg, MO  
660-238-0335

**Little Sioux Gelbvieh**

Contact: Jack Welle  
Milford, IA  
712-251-4641

**Rex Wood Farms**

Contact: Rex Wood  
Meadville, MO  
660-247-2577

**Ward Angus**

Contact: Jeff Ward  
Browning, MO  
660-412-2590

**Duck River Gelbvieh**

Contact: David Bates  
Duck River, TN  
931-209-5053

**Meng Farms Cattle Co.**

Contact: Doug Meng  
Troy, KS  
913-370-0334

**RM Cattle**

Contact: Ryan Grable  
Troy, KS  
785-850-0686

**Wolf Gelbvieh**

Contact: Travis Wolf  
Gothenburg, NE  
308-529-3733

**Flint Hills Gelbvieh**

Contact: Ronald Schultz  
Alma, KS  
785-617-0033

**Mulroy Farms LLC**

Contact: Tim Mulroy  
Mayetta, KS  
785-640-6401

**Rockin' U Ranch**

Contact: Stan Utley  
Richmond, MO  
816-719-3793

**Zimmerman Gelbvieh**

Contact: Tyler Zimmerman  
Harper, KS  
620-243-2876

**Gatson Gelbvieh**

Contact: Adam Gatson  
Vandalia, MO  
573-721-6482

**Narrow Gate Cattle**

Contact: Larry Kendall  
Osage Beach, MO  
573-216-9719

**Sanders Farm**

Contact: Cody Sanders  
Wellsville, KS  
785-248-3202

# About The Catalog:

**Color possibilities:**  
 Black - known red carrier  
 Homo Black - known homozygous black  
 ND Red - known non-diluter red

Designates an RFI tested bull. This data is available on page 5 in the catalog.

**Polled Status:**  
 Polled: Single Polled  
 Scurred  
 Homo Polled

**Balancer**      COLOR      POLLED

**540**  
**RFI**

**PFX      NAME**  
 GRAND SIRE  
 SIRE  
 GRAND DAM  
 MAT GRAND SIRE  
 DAM  
 MAT GRAND DAM

REG #:	REG #:
BD:	B DATE
BW:	BW
WW:	Adj WW

<b>CE</b>	<b>BW</b>	<b>WW</b>	<b>YW</b>	<b>MK</b>	<b>TM</b>	<b>CEM</b>	<b>ST</b>	<b>DOC</b>	<b>CW</b>	<b>REA</b>	<b>MB</b>	<b>\$C</b>	<b>FPI</b>	<b>EPI</b>
<b>BREED PERCENTILE RANKING PER EPD</b>														
Breed %					OWNER:									

EPD'S: All Bulls have an LD Profile and 'Genomic Enhanced EPDs'.

Breed Percentile Ranking: This number corresponds to the EPD directly above it to compare EPDs within breed.

**Actual Data:**  
 Registration #  
 Birthdate  
 Actual BW  
 Adjusted WW

Breed Make-up on Balancer bulls. Abbreviations include: AN = Black Angus AR = Red Angus GV = Gelbvich XX = unknown

## Expected Progeny Differences 'EPD' Definitions

The American Gelbvich Association transitioned to the BOLT system for EPD calculations in the fall of 2018. The American Angus Association had already been using this system for the previous year. There are 12 beef breed Associations in collaboration to form IGS (International Genetic Solutions) which brings a new, streamlined method for incorporating genomic results into the EPDs. This incorporates data and updates EPDs on a weekly basis. EPD Definitions:

**CE:** Calving Ease – A number that predicts the average difference in ease with which a sire's calves will be born when he is bred to first calf heifers – **higher numbers indicate greater calving-ease.**

**BW:** Birth Weight, **WW:** Weaning Weight & **YW:** Yearling Weight – All are expressed in pounds, this shows the expected number of pounds a bull or female will add or subtract from their progeny's birthweight, weaning weight and yearling weight respectively.

**MK:** Milk: expressed in pounds of weaning weight that a female will add/subtract or that a bull's daughters will have.

**TM:** Total Maternal - expresses the combination of what a sire transmits to his daughters in the form of genetics for growth and genetics for milking ability. Or that same trait directly applied to a female and expressed in pounds.

**CEM:** Calving Ease Maternal: this EPD predicts how well an animal's daughters will calve with a higher number being easier calving.

**ST:** Stayability: Predicts the genetic difference, in terms of percent probability, that a bull's daughters will stay productive within a herd to at least six year of age.

**DOC:** is expressed as a difference in yearling cattle temperament, with a higher value indicating more favorable docility. It predicts the average difference of progeny from a sire in comparison with another sire's calves. In herds where temperament problems are not an issue, this expected difference would not be realized.

**CW:** Carcass Weight: expressed in pounds of carcass weight adjusted to a constant fat endpoint.

**REA:** Rib Eye Area: expressed in square inches of rib eye muscle area adjusted to a constant fat endpoint.

**MB:** Marbling: expressed in degrees of marbling score, a determinant of USDA Quality Grade. Value is adjusted to a constant fat endpoint.

**\$Cow:** Represents the genetic value in dollars of profit of an animal when retained as a replacement female relative to other animals in the herd. A higher number represents more profitable genetics for maternal productivity.

**FPI:** An economic selection index designed to aid producers in selecting sires whose progeny will perform in the feedlot and are sold on grade and yield.

**EPI:** An economic selection index developed to aid producers in selecting for more feed efficient cattle that still have acceptable amounts of gain.

**NOTE:** All of the definitions for the Angus EPD Indexes are in the box at the start of the Angus bulls pages with the breed average EPDs.

## ***What you need to know about Residual Feed Intake (RFI)....***

***What is Residual Feed Intake or RFI?*** Residual Feed Intake or RFI is defined as the difference between an animal's actual feed intake and its expected feed requirements for maintenance and growth. RFI is the variation in feed intake that remains after the requirements for maintenance and growth have been met. Efficient animals eat less than expected and have a negative or low RFI, while less efficient animals eat more than expected and have a positive or high RFI.

***How is RFI measured?*** To accurately measure RFI, you have to weigh and log an individual animal's feed consumption and compare that amount to the animal's expected intake over a standardized test period. The technology to do this accurately is available utilizing the GrowSafe feed system. The system has individual bunks that sit on weigh bars that are configured for only one animal to eat at a time. Feed is available free choice and every animal on test has an EID tag. When an animal's head enters the bunk, it passes a sensor that records that individual EID number and measures the amount of feed consumed by that individual. The sensors and weigh bars are taking second by second readings. This feed intake data is instantly transmitted wirelessly to a dedicated computer and stored in its database. All this data and individual animal information and weights are sent to GrowSafe Systems at for analysis and to compute an RFI score.

***How is RFI reported?*** RFI is reported in numerical form plus or minus in pounds of feed. Each group is forced to have an average of zero. The RFI results can range from a minus 3.5 to a plus 3.5. Using this range there can be a difference of 7 pounds of feed consumed per day to achieve a comparable gain.

***How important is RFI data?*** The economic relevance of RFI is significant. RFI is moderately heritable at .28-.44 comparable with other production traits. By selecting for feed efficiency various research documents an increase in carrying capacity of 10% or more and increased feedlot profitability of 10-15%. Imagine reducing feed costs by over 10% or running 10% more cattle on the same resources. However, selecting for RFI must be done as part of a balanced selection program as other traits such as disposition, calving ease, fertility, growth, milk and carcass also have significant economic relevance. Each producer or rancher must analyze their individual situations to determine what traits will be most beneficial to their bottom line.

***How does Seedstock Plus factor in?*** Seedstock Plus has been RFI testing bulls since 2010. We embraced the importance of this data for our use as breeders and also to enhance the selection available to our customers. In the summer of 2013 we purchased and installed our own GrowSafe systems. In the fall of 2015, we expanded the system and in the spring of 2022, we refurbished the bunks and updated the electronics. Accelerating the amount of data generated to incorporate with all the other data Seedstock Plus has been collecting such as DNA and ultrasound.

### ***Reading the RFI test results.***

**Group:** Denotes which group the bull was tested in. The RFI score of bulls from one group should not be compared to other groups as they are separate contemporary groups.

**ADG:** The average daily gain during the RFI test

**ADG Ratio:** Ratio with 100 being average, calculated per group for comparison.

**RFI:** the RFI value calculated from the bull's actual feed intake on test

**RFI RANK:** The RFI rank within each group with 1 being best.



# RFI DATA ON SALE BULLS

RFI Rank is within each group

LOT #	Group	ADG	RATIO	RFI	RANK
224	2A	4.14	99	-2.09	13
228	1	4.64	105	2.05	41
229	1	6.43	145	-0.53	22
230	1	5.29	119	0.11	26
231	2	5.00	116	1.32	51
232	1	5.36	121	0.2	29
233	2	5.57	129	2.38	57
234	1	5.07	114	-1.65	13
235	2	3.86	89	-2.71	8
241	1	5.29	119	-0.86	18
242	1	6.29	142	0.04	24
244	2	4.64	107	-1.83	15
245	2	4.36	101	-2.18	11
246	2	3.93	91	-1.52	18
248	2	5.64	131	0.02	37
250	2	5.14	119	2.6	60
251	2	4.79	111	3.13	62
252	2	5.07	117	0.97	47
253	2	4.29	99	0.62	42
256	1	4.79	108	2.51	43
257	2	5.57	129	1.3	50
259	2	4.43	103	-0.49	28
261	1	4.43	100	-1.96	10
262	1	4.07	92	0.9	33
264	2	4.00	93	-3.84	2
265	2	5.21	121	-0.26	35

PLEASE NOTE! Depending on the timing of the data compilation at IGS - this RFI data may or may not be included in the EPDs! Use the actual data if this is a trait you are utilizing - the EPDs will correct eventually.

--	--	--	--	--	--

## Bull Warranty Program Insurance for your bull!

Several years ago, Seedstock Plus instituted an insurance program for new bull purchases in an effort to protect our customers from a catastrophic loss if something should happen to a bull within the first breeding season. This program covers any and all possible things that a bull can do to himself in the first six months of ownership. The warranty costs **5%** of the purchase price and should you have to use it, we try to either bring you a comparable replacement or find a suitable loaner bull to get the cows bred if you are still in the midst of breeding season. If something happens to him towards the end of the season, we still cover that but often will either take the bull back and issue a credit towards your next purchase or have you ship the bull, keep the salvage funds and issue a credit for the balance. Any way you look at it - we get you back even! We've warranted bulls that have been hit by lightning, hit by trains, drowned, broken various body parts or been injured in such a way that he won't ever be sound to breed cows again.

There are very few affordable commercial insurance policies that will cover a bull for loss of use. Farm policies will cover 'acts of God' (so do we!) but again, an injury is just your tough luck. The **5%** of purchase price cost is a small price if something happens to your bull within that first 6 months!

We appreciate the fact that you've put your trust in us to present you with a bull that has a good disposition, good feet and legs and will breed cows - we feel those things should be 'on us' and you don't need insurance if you have a problem in one of these areas - you just need to let us know and we'll take care of it. We try to catch every possible problem prior to the sale but things happen and bulls are bulls.... But if your bull gets injured or dies, he needs to be insured! Take a good look at what the warranty can offer you and be sure to tell us at the settlement table that you want to insure your bull!

## About Angus Bulls

All of the Angus bulls in this category are registered with the American Angus Association and their EPD's are the most current provided by their Association. Remember that the Angus EPD's can only be compared within breed and to the breed average.

The average EPD's for Angus bulls as of 1/26/2024:

CE: 6 BW: 1.2 WW: 63 YW: 112 MK: 27 CEM: 9 DOC: 18 CW: 50  
REA: .65 MB: .69 \$W:57 \$F: 88 \$G: 53 \$B: 144 \$C: 251

### Angus Index EPD Definitions:

**\$W:** (Weaned Calf Value) is an index value expressed in dollars per head and is the expected average difference in future progeny performance for preweaning merit. \$W includes both revenue and cost adjustments associated with differences in birth weight, weaning direct growth, maternal milk and mature cow size

**\$F:** (Feedlot Value) & **\$G** (Grid Value) (are both an index value expressed in dollars per head, and are the expected average difference in future progeny performance for postweaning merit (\$F) and progeny performance for carcass grid (\$G) compared to progeny of other sires

**\$B:** (Beef Value) is an index value expressed in dollars per head and is the expected average difference in future progeny performance for postweaning and carcass value compared to progeny of other sires

**\$C:** (Combined Value) is an index expressed in dollars per head. The EPDs directly influencing this combined index: calving ease direct (CE) and maternal (CEM), weaning weight (WW), yearling weight (YW), maternal milk (MK), heifer pregnancy (HP), docility (DOC), mature cow weight (MW), foot angle (Angle), claw set (Claw), dry matter intake (DMI), marbling (MB), carcass weight (CW), ribeye area (RE) and fat thickness (Fat) Utilize this index with the objective that producers will replace 20% of their breeding females per year with replacement heifers retained within their own herd. The remaining cull heifer and steer progeny are then assumed to be sent to the feedlot where the producers retain ownership of those cattle and sell them on a quality-based carcass merit grid



## Commercial Angus

201

### Ward Pendleton 167

WB PENDLETON 708 PVF SWSN  
WARD PENDLETON 025  
JM LADY RT ANSWER J109-J301

REG #:	N/A
BD:	11/24/2021
BW:	71
WW:	451

WB PENDLETON 708 PVF SWSN  
WARD LASS 016  
WARD LASS 660

CE	BW	WW	YW	MK	CEM	DOC	CW	REA	MB	\$W	\$F	\$G	\$B	\$C
3	2.7	67	115	22	EPDS ARE A PARENTAL ESTIMATE									
BREED PERCENTILE RANKING PER EPD														
75	80	40	45	80										
Breed %	100AN			OWNER:	Ward Farms									

## Angus

202

### Springhaven Hoover Dam 2777

HOOVER DAM  
SPRINGHAVEN HOOVER DAM  
SPRINGHAVEN BEYONCE 8025

REG #:	20683647
BD:	1/7/2022
BW:	71
WW:	560

SPRINGHAVEN-CC&7  
SPRINGHAVEN CHARM 7770  
SPRINGHAVEN CHARM 2170

CE	BW	WW	YW	MK	CEM	DOC	CW	REA	MB	\$W	\$F	\$G	\$B	\$C
5	-0.1	35	70	31	3	1	35	.52	.49	39	90	42	132	222
BREED PERCENTILE RANKING PER EPD														
60	25	95	95	20	95	95	85	70	70	95	45	70	65	80
Breed %	100AN			OWNER:	Springhaven Farm LLC									

## Angus

203

### Ward Landmark 202

CIRCLE L GUS  
CIRCLE L LANDMARK  
CIRCLE L QUEEN 307B

REG #:	20823946
BD:	2/10/2022
BW:	73
WW:	668

BC LOYAL C1951  
WARD ELMARETTA 118  
JM 585 ELMARETTA 359-849

CE	BW	WW	YW	MK	CEM	DOC	CW	REA	MB	\$W	\$F	\$G	\$B	\$C
7	0.5	56	100	26	11	20	40	.43	.43	56	88	35	123	244
BREED PERCENTILE RANKING PER EPD														
45	35	75	75	55	25	45	75	80	75	60	50	85	80	60
Breed %	100AN			OWNER:	Ward Farms									

## Angus

204

### Ward Thrive 205

TEHAMA REVERE  
S THRIVE JAS 5515  
S SELENA 201

REG #:	20823945
BD:	2/13/2022
BW:	75
WW:	649

5T POWER CHIP 4790  
WARD TROBRIDGE PRIDE 267  
JM MISS SIERRA J057-J420

CE	BW	WW	YW	MK	CEM	DOC	CW	REA	MB	\$W	\$F	\$G	\$B	\$C
6	1.5	62	112	23	8									
BREED PERCENTILE RANKING PER EPD														
55	60	55	50	75	55									
Breed %	100AN			OWNER:	Ward Farms									



# ANGUS BULLS

## Commercial Angus

### Springhaven Mason 2101

SPRINGHAVEN PROGRESS 6083  
 SPRINGHAVEN MASON 9164  
 SPRINGHAVEN EVINCE HD 4164

SPRINGHAVEN ENHANCE 7123  
 SPRINGHAVEN-DONNA 9101  
 SPRINGHAVEN DONNA 6101

REG #:	N/A
BD:	2/22/2022
BW:	67
WW:	638

CE	BW	WW	YW	MK	CEM	DOC	CW	REA	MB	\$W	\$F	\$G	\$B	\$C
7	1.0	57	104	31	EPDS ARE A PARENTAL ESTIMATE									
BREED PERCENTILE RANKING PER EPD														
45	45	70	65	20										
Breed %		100AN	OWNER:		Springhaven Farm LLC									

# 205

## Angus

### Ward Wrangler 230

U-2 COALITION 206C  
 S WRANGLER 830  
 S ERICA 6196

LD CAPITALIST 316  
 WARD LASS 068  
 WARD LASS 628

REG #:	20823952
BD:	9/7/2022
BW:	69
WW:	545

CE	BW	WW	YW	MK	CEM	DOC	CW	REA	MB	\$W	\$F	\$G	\$B	\$C	
8	1.0	50	95	25	9	EPDS ARE A PARENTAL ESTIMATE								43	75
BREED PERCENTILE RANKING PER EPD															
35	45	85	80	70	45									90	80
Breed %		100AN	OWNER:		Ward Farms										

# 209

## Angus

### Ward Playbook 219

TEX PLAYBOOK 5437  
 SAMPSON CD PLAYBOOK 1946  
 CONLEY EISA ERICA 4460

MUSGRAVE BIG SKY 1525  
 BAF MISSY 8465  
 BAF MISSY 4347

REG #:	20823954
BD:	3/17/2022
BW:	69
WW:	712

CE	BW	WW	YW	MK	CEM	DOC	CW	REA	MB	\$W	\$F	\$G	\$B	\$C	
5	2.3	64	114	29	11	EPDS ARE A PARENTAL ESTIMATE								56	84
BREED PERCENTILE RANKING PER EPD															
60	75	50	50	30	25									60	60
Breed %		100AN	OWNER:		Ward Farms										

# 206

## Angus

### Ward Convoy 261

CONNEALY CONCORD  
 CONNEALY CONVOY  
 EBBIE OF CONANGA 5473

WARD TRACTION 247  
 WARD NEW DESIGN 082  
 WARD NEW DESIGN 347

REG #:	20823965
BD:	9/7/2022
BW:	72
WW:	525

CE	BW	WW	YW	MK	CEM	DOC	CW	REA	MB	\$W	\$F	\$G	\$B	\$C	
5	1.9	62	113	24	8	EPDS ARE A PARENTAL ESTIMATE								50	82
BREED PERCENTILE RANKING PER EPD															
60	65	55	50	70	55									80	65
Breed %		100AN	OWNER:		Ward Farms										

# 210

## Angus

### Springhaven Mason 2048

SPRINGHAVEN PROGRESS 6083  
 SPRINGHAVEN MASON 9164  
 SPRINGHAVEN EVINCE HD 4164

SPRINGHAVEN HERO 1009  
 SPRINGHAVEN-BLACKCAP 4148  
 SPRINGHAVEN BLACKCAP 5148

REG #:	20787763
BD:	5/1/2022
BW:	74
WW:	624

CE	BW	WW	YW	MK	CEM	DOC	CW	REA	MB	\$W	\$F	\$G	\$B	\$C
6	0.9	44	84	24	10	21	29	.28	.39	40	72	33	105	205
BREED PERCENTILE RANKING PER EPD														
55	45	95	90	70	35	40	95	95	80	95	85	85	95	90
Breed %		100AN	OWNER:		Springhaven Farm LLC									

# 207

## Angus

### FHCC LAW Empower 2414

SYDGEN ENHANCE  
 FHCC EMPOWER 8565  
 CIRCLE A BANDO 0365

SITZ STELLAR 726D  
 FHCC EVERGREEN 0409  
 FHCC EVERGREEN 6525

REG #:	20839863
BD:	9/10/2022
BW:	65
WW:	656

CE	BW	WW	YW	MK	CEM	DOC	CW	REA	MB	\$W	\$F	\$G	\$B	\$C
4	1.4	65	122	28	EPDS ARE A PARENTAL ESTIMATE									
BREED PERCENTILE RANKING PER EPD														
70	55	45	35	40										
Breed %		100AN	OWNER:		Lawman Farms									

# 211

## Commercial Angus

### Springhaven Mason 2355 (DDC)

SPRINGHAVEN PROGRESS 6083  
 SPRINGHAVEN MASON 9164  
 SPRINGHAVEN EVINCE HD 4164

G A R PROPHET  
 SPRINGHAVEN PROFIT 6355  
 SPRINGHAVEN-ANNIE 3005-D

REG #:	N/A
BD:	5/31/2022
BW:	72
WW:	641

CE	BW	WW	YW	MK	CEM	DOC	CW	REA	MB	\$W	\$F	\$G	\$B	\$C
4	2.4	59	104	32	EPDS ARE A PARENTAL ESTIMATE									
BREED PERCENTILE RANKING PER EPD														
70	75	65	65	15										
Breed %		100AN	OWNER:		Springhaven Farm LLC									

# 208

## Angus

### Ward Wrangler 285

U-2 COALITION 206C  
 S WRANGLER 830  
 S ERICA 6196

MOHNEN 67 CHARGER  
 WARD ARKDALE PRIDE 072  
 WARD ARKDALE PRIDE 548

REG #:	20823956
BD:	9/10/2022
BW:	68
WW:	595

CE	BW	WW	YW	MK	CEM	DOC	CW	REA	MB	\$W	\$F	\$G	\$B	\$C	
8	1.4	62	113	25	9	EPDS ARE A PARENTAL ESTIMATE								53	79
BREED PERCENTILE RANKING PER EPD															
35	55	55	50	60	45									70	70
Breed %		100AN	OWNER:		Ward Farms										

# 212

# ANGUS BULLS

## Angus

### Ward Perseverance 232

PLATTEMERE WEIGH UP K360  
MEAD PERSEVERANCE R1266  
MEAD MISS MARATHON L835

LD CAPITALIST 316  
WARD NEW DESIGN 9029  
JM NEW DESIGN 564-M958

REG #:	20823959
BD:	9/11/2022
BW:	70
WW:	534

CE	BW	WW	YW	MK	CEM	DOC	CW	REA	MB	\$W	\$F	\$G	\$B	\$C
8	0.7	61	108	23	10	16	50	.56	.71	55	99	54	153	269
BREED PERCENTILE RANKING PER EPD														
35	40	60	60	75	35	65	50	65	45	65	30	45	40	35
Breed %	100AN				OWNER:	Ward Farms								

# 213

## Angus

### Ward Convoy 235

CONNEALY CONCORD  
CONNEALY CONVOY  
EBBIE OF CONANGA 5473

SITZ ALLIANCE 6595  
BUFORD BLACKCAP 0199  
J BAR 7 BLACKCAP 7272

REG #:	20823962
BD:	9/14/2022
BW:	69
WW:	784

CE	BW	WW	YW	MK	CEM	DOC	CW	REA	MB	\$W	\$F	\$G	\$B	\$C
5	1.4	83	135	28	11	16	50	.65	.26	79	101	32	133	246
BREED PERCENTILE RANKING PER EPD														
60	55	10	15	40	25	65	50	50	90	10	25	90	65	55
Breed %	100AN				OWNER:	Ward Farms								

# 217

## Commercial Angus

### Ward Pendleton 266

WB PENDLETON 708 PVF SWSN  
WARD PENDLETON 025  
JM LADY RT ANSWER J109-J301

LD CAPITALIST 316  
WARD LADY 9006  
WARD LADY 457

REG #:	N/A
BD:	9/12/2022
BW:	72
WW:	636

CE	BW	WW	YW	MK	CEM	DOC	CW	REA	MB	\$W	\$F	\$G	\$B	\$C
6	1.6	64	112	24	EPDS ARE A PARENTAL ESTIMATE									
BREED PERCENTILE RANKING PER EPD														
55	60	50	50	70										
Breed %	100AN				OWNER:	Ward Farms								

# 214

## Angus

### Ward Convoy 236

CONNEALY CONCORD  
CONNEALY CONVOY  
EBBIE OF CONANGA 5473

CONNEALY ARMORY  
WARD TROWBRIDGE PRIDE 020  
WARD TROWBRIDGE PRIDE 267

REG #:	20823949
BD:	9/14/2022
BW:	71
WW:	670

CE	BW	WW	YW	MK	CEM	DOC	CW	REA	MB	\$W	\$F	\$G	\$B	\$C		
6	1.6	78	137	31	9											
											69	88				
BREED PERCENTILE RANKING PER EPD																
55	60	15	15	20	45										25	50
Breed %	100AN				OWNER:	Ward Farms										

# 218

## Angus

### Ward Mutual Fund 288

DEER VALLEY GROWTH FUND  
MEAD MUTUAL FUND  
MEAD MISS MARATHON L007

BC LOYAL C1951  
WARD ARKDALE PRIDE 9059  
W F ARKDALE PRIDE 403B

REG #:	20823948
BD:	9/12/2022
BW:	69
WW:	717

CE	BW	WW	YW	MK	CEM	DOC	CW	REA	MB	\$W	\$F	\$G	\$B	\$C		
8	0.6	76	129	29	9										70	85
BREED PERCENTILE RANKING PER EPD																
35	35	20	25	30	45										20	55
Breed %	100AN				OWNER:	Ward Farms										

# 215

## Angus

### Ward Convoy 282

CONNEALY CONCORD  
CONNEALY CONVOY  
EBBIE OF CONANGA 5473

LD CAPITALIST 316  
WARD EXPRESS 014  
WARD EXPRESS 297

REG #:	20823953
BD:	9/14/2022
BW:	71
WW:	567

CE	BW	WW	YW	MK	CEM	DOC	CW	REA	MB	\$W	\$F	\$G	\$B	\$C		
6	1.5	63	113	26	10										55	81
BREED PERCENTILE RANKING PER EPD																
55	60	55	50	55	35										65	65
Breed %	100AN				OWNER:	Ward Farms										

# 219

## Angus

### Ward Perseverance 234

PLATTEMERE WEIGH UP K360  
MEAD PERSEVERANCE R1266  
MEAD MISS MARATHON L835

LD CAPITALIST 316  
WARD LADY BELLE 9048  
WALLACE LADY BELLE 2108

REG #:	20823960
BD:	9/13/2022
BW:	68
WW:	697

CE	BW	WW	YW	MK	CEM	DOC	CW	REA	MB	\$W	\$F	\$G	\$B	\$C		
9	0.5	78	131	27	11										70	86
BREED PERCENTILE RANKING PER EPD																
30	35	15	20	45	25										20	55
Breed %	100AN				OWNER:	Ward Farms										

# 216

## Angus

### Ward Mutual Fund 2901

DEER VALLEY GROWTH FUND  
MEAD MUTUAL FUND  
MEAD MISS MARATHON L007

LD CAPITALIST 316  
WARD ARKDALE PRIDE 548  
W F ARKDALE PRIDE 403B

REG #:	20839814
BD:	9/20/2022
BW:	70
WW:	617

CE	BW	WW	YW	MK	CEM	DOC	CW	REA	MB	\$W	\$F	\$G	\$B	\$C		
7	1.5	71	123	29	11										64	85
BREED PERCENTILE RANKING PER EPD																
45	60	30	35	30	25										40	55
Breed %	100AN				OWNER:	Ward Farms										

# 220

## About Balancer® Bulls

The Profitable Blend of Angus and Gelbvieh Genetics!

Balancer hybrids offer a simple and powerful way to maintain hybrid vigor and the proper blend of British and Continental genetics in your cowherd without complicated crossbreeding systems. Registered Balancer hybrids combine the Angus advantages of calving ease, moderate mature size, marbling and convenience traits with Gelbvieh growth, muscle leanness, fertility and unequaled pounds of calf per cow exposed in a single animal. And, documented research proves that Balancer hybrids offer the same consistency as their purebred parents with improved uniformity of composition. Plus, Balancers are registered seedstock, complete with documented parentage and EPD's. Balancer bulls are registered as Gelbvieh and Angus or Red Angus hybrids with a minimum of 75% of the pedigree documented and with both the sire and the dam recorded with their respective association. There are also registered Hybrid bulls in this category, the difference being a varying percentage of Gelbvieh as well as a mixture of other breeds. These bulls can be used in a similar way as the Balancer bulls as long as the buyer is aware of the actual breed makeup as close as can be known.

Both the Balancer & Hybrid bulls' EPD's are figured on the Gelbvieh base and can be compared to the Gelbvieh bulls. The average EPD's for Balancer bulls as of 1/16/2024 are:

CE: 13 BW: -0.4 WW: 72 YW: 112 Milk: 23 TM: 59 CEM: 7 ST: 15  
DOC: 12 CW: 37 REA: .51 MB: .36 \$C: 105.79 FPI: 81.85 EPI: 116.27

## Balancer Homo Black Homo Polled **223**

### TMMW Mr Banker 92K

TMMW NEVADAS MR BANKER 57A  
TMMW MR BANKER 154F  
TMMW MISS MIF 105B

DCH HILLE STOCK OPTIONS D410  
TMMW MISS STOCK OPTIONS 47F  
TMMW MISS GOVERNOR 48B

REG #:	1545170
BD:	4/21/2022
BW:	80
WW:	762

CE	BW	WW	YW	MK	TM	CEM	ST	DOC	CW	REA	MB	\$C	FPI	EPI	
15	2.6	83	128	19	61	9	19	13	30	.76	.32	132.91	84.49	145.04	
BREED PERCENTILE RANKING PER EPD															
25	>95	15	15	85	40	15	5	25	75	10	60	10	35	25	
Breed %	70GV 30AN				OWNER:				Mulroy Farms LLC						

## Balancer Black Homo Polled **224**

### DJZ 42K

SKF DUNNS SHIFT 04C  
TMMW MR LEACHMAN SHIFT 141E  
TMMW MISS MEDINA 127C

DCSF POST ROCK WESTERN 230X2  
OZZ LILAC 38B  
OZZ SARAH 18Z

REG #:	1572367
BD:	5/24/2022
BW:	81
WW:	516

CE	BW	WW	YW	MK	TM	CEM	ST	DOC	CW	REA	MB	\$C	FPI	EPI	
13	-0.4	61	93	29	60	7	15	11	23	.41	.17	103.29	70.44	129.50	
BREED PERCENTILE RANKING PER EPD															
50	50	90	90	10	45	45	40	70	90	70	90	60	>95	35	
Breed %	63GV 37AN				OWNER:				Zimmerman Gelbvieh						

## Balancer Black Homo Polled **221**

### LSR 46K

CONNEALY UPTOWN 098E  
BVC MR BALANCE 516E  
RLS FORTUNE GAL 35Z

LJC MISSION STATEMENT P27  
LSR MISS STATEMENT 48D  
BBGV FREEDOMS PRICE 417P ET

REG #:	1548964
BD:	3/4/2022
BW:	88
WW:	544

CE	BW	WW	YW	MK	TM	CEM	ST	DOC	CW	REA	MB	\$C	FPI	EPI	
10	1.6	62	100	22	53	5	19	14	16	.47	.36	117.50	72.76	175.65	
BREED PERCENTILE RANKING PER EPD															
90	90	90	80	60	85	80	5	10	>95	60	50	25	95	10	
Breed %	50GV 25AN 25AR				OWNER:				Flint Hills Gelbvieh						

## Balancer Homo Black Homo Polled **225**

### GMF 28K

CCRO CAROLINA LEVERAGE 3214A  
WAHL 4H ET  
FHG FLYING H MS LEGACY 48Y

PANTHER CR BUTKUS 6703  
GMF MENG 83F  
GMF MENG 636D

REG #:	1553264
BD:	7/1/2022
BW:	68
WW:	528

CE	BW	WW	YW	MK	TM	CEM	ST	DOC	CW	REA	MB	\$C	FPI	EPI	
13	-2.9	73	114	25	63	9	20	12	32	.39	.70	140.42	93.79	92.32	
BREED PERCENTILE RANKING PER EPD															
50	10	45	45	30	30	15	2	50	65	75	3	3	10	75	
Breed %	69GV 31AN				OWNER:				Meng Farms Cattle Company						

## Balancer Homo Black Homo Polled **222**

### CCFM 21K

HYEK BLACK IMPACT 3960N  
CTR IMPACT 6563D  
CTR EBONY 6845

CTR GOOD NIGHT 715T  
CCFM 601D  
CCFM 415B

REG #:	1571549
BD:	3/13/2022
BW:	83
WW:	622

CE	BW	WW	YW	MK	TM	CEM	ST	DOC	CW	REA	MB	\$C	FPI	EPI	
14	-0.4	61	93	20	51	6	16	9	11	.34	.14	69.14			
BREED PERCENTILE RANKING PER EPD															
35	50	90	90	75	90	65	30	95	>95	85	95	>95			
Breed %	50GV 44AN 6XX				OWNER:				Chapuis Cattle Farm						

**Genomic-Enhanced EPDs**  
All of the bulls in the Seedstock Plus Program are DNA tested to be able to provide the most accurate, DNA -Enhanced EPDs as part of our commitment to bring you the best data so you can make the most informed decision and get the best bull for your program. Let us know if you need any help understanding any of the data.

# BALANCER BULLS



**Balancer** Homo Black Homo Polled **229**  
**TMGC SB Barcelona 158K**

CCRO CAROLINA LEVERAGE 3214A  
 TMGC SB FORMULA 12E  
 TMGC SB DANIELLE 07C

TMGC SB SILENT NIGHTS 2005B  
 TMGC SB SILENCE OF KARA 290E  
 TMGC SB HILDA 130B

**RFI**

REG #:	1564388
BD:	9/5/2022
BW:	81
WW:	638

CE	BW	WW	YW	MK	TM	CEM	ST	DOC	CW	REA	MB	\$C	FPI	EPI
12	1.5	92	143	26	72	7	10	14	55	.88	.57	93.21	96.89	166.78
BREED PERCENTILE RANKING PER EPD														
65	90	2	3	25	3	45	95	10	10	3	15	80	30	10
Breed %			67GV 33AN			OWNER:			Stuecken Bros					

**Balancer** Homo Black Homo Polled **226**  
**DAMG Mr Stock Opt 26K**

CCRO CAROLINA LEVERAGE 3214A  
 DCH HILLE STOCK OPTIONS D410  
 DCH HILLE B189 ET

JJNR MONEY TALKS B43C  
 DAMG GENUINE MONEY TALKS 2G  
 JGPG WILMA 741E

REG #:	1545757
BD:	8/7/2022
BW:	87
WW:	754

CE	BW	WW	YW	MK	TM	CEM	ST	DOC	CW	REA	MB	\$C	FPI	EPI
12	0.9	86	124	27	70	7	17	12	34	.81	.47	136.20	91.08	146.79
BREED PERCENTILE RANKING PER EPD														
65	80	10	25	15	5	45	20	50	60	10	25	5	15	20
Breed %			72GV 28AN			OWNER:			Reinert Family Farm					

**Balancer** Homo Black Homo Polled **230**  
**TMGC SB Barcelona 160K**

CCRO CAROLINA LEVERAGE 3214A  
 TMGC SB FORMULA 12E  
 TMGC SB DANIELLE 07C

TMGC SB SILENT NIGHTS 2005B  
 TMGC SB SILENCE 147F  
 TMGC SB MADONNA 259C

**RFI**

REG #:	1564390
BD:	9/7/2022
BW:	78
WW:	589

CE	BW	WW	YW	MK	TM	CEM	ST	DOC	CW	REA	MB	\$C	FPI	EPI
15	-2.4	83	121	22	63	10	15	14	34	.79	.57	115.21	96.07	157.41
BREED PERCENTILE RANKING PER EPD														
25	15	15	30	60	30	10	40	10	60	10	15	30	4	15
Breed %			61GV 39AN			OWNER:			Stuecken Bros					

**Balancer** Homo Black Homo Polled **227**  
**DRGF 226K**

GMF FORTUNE 616D  
 HRZN G213  
 HRZN D337

ABF 8139U  
 ABF 2235Z  
 ABF 5007R

REG #:	1571986
BD:	8/31/2022
BW:	76
WW:	698

CE	BW	WW	YW	MK	TM	CEM	ST	DOC	CW	REA	MB	\$C	FPI	EPI
13	0.3	68	100	27	61	7	13	9	52	.58	.43	91.27	80.09	96.19
BREED PERCENTILE RANKING PER EPD														
50	65	70	80	15	40	45	70	95	10	35	35	85	60	75
Breed %			75GV 25AN			OWNER:			Duck River Gelbvieh					

**Balancer** Homo Black Homo Polled **231**  
**NGCC Tour of Duty K88**

R B TOUR OF DUTY 177  
 NGCC NG TOUR OF DUTY D19  
 JOSH 19EHX

Y-WONDERFUL J57Y  
 SJCC J5 MS BALANCER J108B  
 SJCC X-WONDER 61X

**RFI**

REG #:	1551596
BD:	9/10/2022
BW:	80
WW:	612

CE	BW	WW	YW	MK	TM	CEM	ST	DOC	CW	REA	MB	\$C	FPI	EPI
12	-0.2	75	116	28	66	6	17	9	42	.28	.46	114.38	86.16	168.00
BREED PERCENTILE RANKING PER EPD														
65	55	35	40	10	15	65	20	95	30	90	25	35	30	10
Breed %			48GV 52AN			OWNER:			Narrow Gate Cattle					

**Balancer** Homo Black Homo Polled **228**  
**RUR Desperado 123K**

TMMW DESTINATION 82Y  
 BTBR SAGUARO 8111F ET  
 JEB BCC MISS OBJECTIVE 41W

JKGF DITKA C85  
 RUR SUNSHINE  
 RUR SS JENNY

**RFI**

REG #:	1562056
BD:	9/5/2022
BW:	65
WW:	574

CE	BW	WW	YW	MK	TM	CEM	ST	DOC	CW	REA	MB	\$C	FPI	EPI
16	-1.1	87	138	18	61	9	16	10	36	.54	.33	104.82	91.10	186.02
BREED PERCENTILE RANKING PER EPD														
15	35	5	10	90	40	15	30	90	50	45	55	55	15	4
Breed %			56GV 44AN			OWNER:			Rockin'-U-Ranch					

**Balancer** Double Black Double Polled **232**  
**RDW 20K**

SYDGEN ENHANCE  
 MSHIP SMOKEYS MOONSHINER  
 MTB BCC MISS BALANCE 46A

JBOB CAROLINA FORTUNE 2564J ET  
 RDW 170B  
 RAZ BLACK BALANCE 760T

**RFI**

REG #:	1575686
BD:	9/11/2022
BW:	84
WW:	623

CE	BW	WW	YW	MK	TM	CEM	ST	DOC	CW	REA	MB	\$C	FPI	EPI
11	0.8	77	123	31	70	4	15	9	44	.74	.43	107.90	85.86	148.61
BREED PERCENTILE RANKING PER EPD														
80	80	30	25	2	5	90	40	95	25	15	35	45	30	20
Breed %			50GV 50AN			OWNER:			Rex Wood Farms					

Coat color, Polled Status & GE-EPDs are pending a retest - see supplement sheet

# BALANCER BULLS

**Balancer** Homo Black Homo Polled **233**  
**BRNS 261K**

EGL TENDERLOIN N407  
 WMF BLACK MARBLE TENDER 006X  
 MJCC 807U

TMMW NEVADAS MR BANKER 57A  
 TMMW MISS BANKER 146D  
 TMMW MISS EXTRA CIM 7018T

**RFI**

REG #:	1580399
BD:	9/12/2022
BW:	84
WW:	581

CE	BW	WW	YW	MK	TM	CEM	ST	DOC	CW	REA	MB	\$C	FPI	EPI
15	0.6	87	140	13	57	9	16	11	42	.89	.52	114.73	95.03	148.88
BREED PERCENTILE RANKING PER EPD														
25	75	5	5	>95	65	15	30	70	30	3	20	30	5	20
Breed %		50GV 50AN			OWNER:		Burns Gelbvieh							

**Balancer** Homo Black Homo Polled **237**  
**TMMW Mr Ditka 131K**

JKGF DITKA C85  
 JJNR MR DITKA 26F  
 JJNR MISS TENDERLOIN BAL 261YA

HPR ROYAL BISMARCK 0504  
 TMMW MISS BISMARCK 140B  
 TMMW GOVENORS MISS FOCUS 137Y

REG #:	1559295
BD:	9/17/2022
BW:	75
WW:	672

CE	BW	WW	YW	MK	TM	CEM	ST	DOC	CW	REA	MB	\$C	FPI	EPI
14	-1.5	78	132	20	59	10	16	9	44	.61	.21	108.51	83.56	137.08
BREED PERCENTILE RANKING PER EPD														
35	25	25	10	75	50	10	30	95	25	30	85	45	40	30
Breed %		47GV 53AN			OWNER:		Mulroy Farms LLC							

**Balancer** Homo Black Homo Polled **234**  
**RDW 37K (DDC)**

SHIPWHEEL CHINOOK  
 BTBR BLACK CROSS HERO 4031  
 BTBR MS BLACK CROSS 2336

DJZ SYMMETRY 55D  
 RDW 836H  
 RDW 524E

**RFI**

REG #:	1577020
BD:	9/12/2022
BW:	66
WW:	557

CE	BW	WW	YW	MK	TM	CEM	ST	DOC	CW	REA	MB	\$C	FPI	EPI
16	-1.9	69	107	28	63	9	11	14	37	.54	.33	89.13	82.26	90.10
BREED PERCENTILE RANKING PER EPD														
15	20	65	60	10	30	15	90	10	50	45	55	85	50	80
Breed %		44GV 56AN			OWNER:		Rex Wood Farms							

**Balancer** Homo Black Homo Polled **238**  
**TMMW Mr Treasure 132K**

MGR TREASURE  
 TAU FORTUNE 8H ET  
 TAU MS GUNNISON 106R 3147A

OZZ EXT GOVENOR 3N  
 TMMW GOVENORS MS AUGUST 92Y  
 TMMW MISS CIM AUGUST 872U

REG #:	1559296
BD:	9/18/2022
BW:	77
WW:	779

CE	BW	WW	YW	MK	TM	CEM	ST	DOC	CW	REA	MB	\$C	FPI	EPI
11	-0.6	76	113	22	61	9	15	13	28	.62	.49	106.32	86.62	108.02
BREED PERCENTILE RANKING PER EPD														
80	45	35	45	60	40	15	40	25	80	30	20	50	25	60
Breed %		63GV 37AN			OWNER:		Mulroy Farms LLC							

**Balancer** Homo Black Homo Polled **235**  
**SWW Leverage Kat 379K55 ET**

VRT LAZY TV SAM U451  
 CCRO CAROLINA LEVERAGE 3214A  
 CCRO BELLE OF THE BALL 1309Y

S A V FINAL ANSWER 0035  
 MLG MEADOWLARKS KIT KAT 379X  
 MLG MEADOWLARKS KIT KAT

**RFI**

REG #:	1548674
BD:	9/14/2022
BW:	ET
WW:	ET

CE	BW	WW	YW	MK	TM	CEM	ST	DOC	CW	REA	MB	\$C	FPI	EPI
12	-2.0	79	115	25	65	8	17	16	30	.52	.36	129.26	87.37	111.51
BREED PERCENTILE RANKING PER EPD														
65	20	20	40	30	20	30	20	2	75	50	50	10	25	55
Breed %		69GV 31AN			OWNER:		Wolf Gelbvieh							

**Balancer** ND Red Homo Polled **239**  
**DRGF 262K**

ASCH JNCC RESOLUTE DIRECTIVE  
 JNCC RED DIRECTIVE 367A  
 JNCC RIKKI FORTUNE 09X

RES TRAVELER 251 004 6201  
 DRGF 412B  
 SNB VISION

REG #:	1571987
BD:	9/19/2022
BW:	82
WW:	713

CE	BW	WW	YW	MK	TM	CEM	ST	DOC	CW	REA	MB	\$C	FPI	EPI
12	1.1	88	134	22	65	6	21	11	43	.53	.09	133.94	81.89	111.76
BREED PERCENTILE RANKING PER EPD														
65	85	4	10	60	20	65	1	70	30	50	>95	10	50	55
Breed %		75GV 25AN			OWNER:		Duck River Gelbvieh							

**Balancer** ND Red Homo Polled **236**  
**MTB BCC Red Balance 14K**

OVER DRAFT PICK 413D  
 RR0G OVER GAME DAY 443G ET  
 OGS0 028X

MTB BCC PEDRO 6A  
 MTB BCC MS PEDRO 814F ET  
 MTB BCC MO RED 17P

REG #:	1561769
BD:	9/17/2022
BW:	76
WW:	649

CE	BW	WW	YW	MK	TM	CEM	ST	DOC	CW	REA	MB	\$C	FPI	EPI
11	2.6	85	127	27	69	7	13	17	38	.29	.45	91.06	86.31	145.93
BREED PERCENTILE RANKING PER EPD														
80	>95	10	20	15	10	45	70	1	45	90	30	85	30	25
Breed %		53GV 34AR 13AN			OWNER:		Burbank Cattle Company							



# BALANCER BULLS

**Balancer** Homo Black Homo Polled **240**  
**DRGF 264K**

GMF FORTUNE 616D  
 HRZN H182  
 HRZN E103  
  
 JJNR MR GOVENOR B44Z  
 JEB DR BCC MISS BALANCE 214C  
 SNB CASSIE

REG #:	1572030
BD:	9/19/2022
BW:	78
WW:	666

CE	BW	WW	YW	MK	TM	CEM	ST	DOC	CW	REA	MB	\$C	FPI	EPI
10	0.9	83	120	21	63	5	17	10	33	.52	.33	114.57	84.89	112.08
BREED PERCENTILE RANKING PER EPD														
90	80	15	30	70	30	80	20	90	65	50	55	30	35	55
Breed %		67GV 33AN			OWNER:		Duck River Gelbvieh							

**Balancer** Homo Black Homo Polled **243**  
**TMMW Mr Stock Options 149K**

CCRO CAROLINA LEVERAGE 3214A  
 DCH HILLE STOCK OPTIONS D410  
 DCH HILLE B189 ET  
  
 STG MR MEDINA 51Y14  
 TMMW MISS MIF 105B  
 TMMW MISS CIM MISSY 8518U

REG #:	1559736
BD:	9/26/2022
BW:	80
WW:	750

CE	BW	WW	YW	MK	TM	CEM	ST	DOC	CW	REA	MB	\$C	FPI	EPI
14	2.3	91	143	25	71	7	25	12	41	.79	.46	168.69	92.92	157.49
BREED PERCENTILE RANKING PER EPD														
35	95	2	3	30	4	45	1	50	35	10	25	1	10	15
Breed %		75GV 25AN			OWNER:		Mulrov Farms LLC							

**Balancer** Black Homo Polled **241**  
**RDW 34K**

TMMW DESTINATION 82Y  
 BTBR SAGUARO 8111F ET  
 JEB BCC MISS OBJECTIVE 41W  
  
 JBOB CAROLINA FORTUNE 2564J ET  
 RDW 346C  
 RDW MISS NEW LEVEL 446Z

**RFI**

REG #:	1575698
BD:	9/19/2022
BW:	68
WW:	616

CE	BW	WW	YW	MK	TM	CEM	ST	DOC	CW	REA	MB	\$C	FPI	EPI
15	-2.3	71	113	23	58	8	17	13	36	.42	.53	114.43	88.31	129.14
BREED PERCENTILE RANKING PER EPD														
25	15	55	45	50	55	30	20	25	50	70	15	30	20	35
Breed %		63GV 37AN			OWNER:		Rex Wood Farms							

**Balancer** Homo Black Homo Polled **244**  
**TMMW Mr Treasure 152K**

MGR TREASURE  
 TAU FORTUNE 8H ET  
 TAU MS GUNNISON 106R 3147A  
  
 TMMW GOVENORS MR EXTRA 6018W  
 TMMW MISS GOVENOR 107A  
 TMMW MISS CIM POWERCAT 8828U

**RFI**

REG #:	1559738
BD:	9/26/2022
BW:	80
WW:	724

CE	BW	WW	YW	MK	TM	CEM	ST	DOC	CW	REA	MB	\$C	FPI	EPI
9	2.1	76	121	20	58	7	16	12	37	.65	.36	109.65	80.24	126.72
BREED PERCENTILE RANKING PER EPD														
95	95	35	30	75	55	45	30	50	25	50	45	60	40	40
Breed %		53GV 47AN			OWNER:		Mulrov Farms LLC							

**Balancer** Homo Black Homo Polled **242**  
**TMGC SB Cactus 194K**

TMMW DESTINATION 82Y  
 BTBR SAGUARO 8111F ET  
 JEB BCC MISS OBJECTIVE 41W  
  
 JJNR MR PAYWEIGHT A10E  
 TMGC SB SUGAR MAMA 176H  
 TMGC SB SILENCE 128F

**RFI**

REG #:	1564434
BD:	9/19/2022
BW:	77
WW:	587

CE	BW	WW	YW	MK	TM	CEM	ST	DOC	CW	REA	MB	\$C	FPI	EPI
14	-0.7	85	139	22	63	9	17	12	53	.32	.61	117.33	95.20	188.95
BREED PERCENTILE RANKING PER EPD														
35	45	10	5	60	30	15	20	50	10	85	10	25	4	3
Breed %		44GV 56AN			OWNER:		Stuecken Bros							

**Balancer** Homo Black Polled **245**  
**LSR Flint Hills 410K**

TMGC SB FORMULA 12E  
 TMGC SB BARCELONA 124H  
 TMGC SB HILDA 44D  
  
 JJNR MR GOVENOR BAL B29Y  
 LSR 415B  
 BBGV STCKMN MS HRTLND 418P ET

**RFI**

REG #:	1562261
BD:	9/27/2022
BW:	88
WW:	663

CE	BW	WW	YW	MK	TM	CEM	ST	DOC	CW	REA	MB	\$C	FPI	EPI
13	0.0	78	120	22	61	9	17	10	35	.45	.55	121.02	89.38	125.77
BREED PERCENTILE RANKING PER EPD														
50	60	25	30	60	40	15	20	90	55	65	15	20	15	40
Breed %		66GV 34AN			OWNER:		Flint Hills Gelbvieh							



**Balancer** Homo Black Homo Polled **246**  
**MTB BCC Black Balance 48K**

SCHIEFELBEIN ALLIED 514  
 SKF DUNNS ALLIED JACKPOT 111H  
 SKF DUNNS EXCLUSIVE JACKPOT 860F ET  
  
 TMMW DESTINATION 82Y  
 MTB BCC MS DESTINATION 508E ET  
 JEB BCC MISS OBJECTIVE 41W

**RFI**

REG #:	1561800
BD:	9/29/2022
BW:	76
WW:	677

CE	BW	WW	YW	MK	TM	CEM	ST	DOC	CW	REA	MB	\$C	FPI	EPI
14	-0.2	72	121	28	64	9	11	12	36	.43	.77	90.63	92.87	173.85
BREED PERCENTILE RANKING PER EPD														
35	55	50	30	10	25	15	90	50	50	70	2	85	10	10
Breed %		56GV 44AN			OWNER:		Burbank Cattle Company							

# BALANCER BULLS

**Balancer** Homo Black Homo Polled **247**  
**TMMW Mr Tank 162K**

NORG TANK B274  
 NORG TANK G310  
 NORG LEXUS C31

BTBR NEVADA 1170Y  
 TMMW MISS NEVADA 143C  
 TMMW MISS AUGUST CIM 7532T

REG #:	1559748
BD:	10/1/2022
BW:	78
WW:	763

CE	BW	WW	YW	MK	TM	CEM	ST	DOC	CW	REA	MB	\$C	FPI	EPI
13	-1.7	73	115	23	60	8	14	10	45	.60	.72	92.87	93.37	109.81
BREED PERCENTILE RANKING PER EPD														
50	25	45	40	50	45	30	55	90	25	35	3	80	10	60
Breed %		48GV 52AN			OWNER:		Mulroy Farms LLC							



**Balancer** Homo Black Homo Polled **248**  
**HRZN K385**

WMF BLACK MARBLE TENDER 006X  
 SKF DUNNS TOTAL TENDER 161H  
 SKF DUNNS MS YERINGTON 8F38

HRZN C337  
 HRZN G412  
 HRZN D383

**RFI**

REG #:	1574723
BD:	10/3/2022
BW:	76
WW:	566

CE	BW	WW	YW	MK	TM	CEM	ST	DOC	CW	REA	MB	\$C	FPI	EPI
14	2.8	81	137	20	61	8	13	16	48	.35	.53	102.54	88.19	184.63
BREED PERCENTILE RANKING PER EPD														
35	>95	15	10	75	40	30	70	2	15	85	15	60	20	4
Breed %		55GV 42AN 3AR			OWNER:		Horizon Farms							

**Balancer** Homo Black Homo Polled **251**  
**TMMW Mr Treasure 194K**

MGR TREASURE  
 TAU FORTUNE 8H ET  
 TAU MS GUNNISON 106R 3147A

DLW TPG PAYIN BILLS 3048C  
 TMMW MISS PAYIN BILLS 136F  
 TMMW MISS BISMARCK 143A

**RFI**

REG #:	1576743
BD:	10/13/2022
BW:	74
WW:	748

CE	BW	WW	YW	MK	TM	CEM	ST	DOC	CW	REA	MB	\$C	FPI	EPI
11	-0.1	77	123	24	63	8	18	13	44	.50	.38	117.14	84.06	134.25
BREED PERCENTILE RANKING PER EPD														
80	60	30	25	40	30	30	10	25	55	45	25	40	30	
Breed %		47GV 53AN			OWNER:		Mulroy Farms LLC							

**Balancer** Homo Black Homo Polled **249**  
**TMMW Mr Banker 171K**

TMMW NEVADAS MR BANKER 57A  
 TMMW MR BANKER 154F  
 TMMW MISS MIF 105B

KHR 79B  
 TMMW MISS MONTANA 255E  
 TMMW MISS GOVENOR 148A

REG #:	1559760
BD:	10/3/2022
BW:	76
WW:	795

CE	BW	WW	YW	MK	TM	CEM	ST	DOC	CW	REA	MB	\$C	FPI	EPI
19	1.9	77	120	23	61	12	17	10	37	.70	.20	117.41	79.66	129.60
BREED PERCENTILE RANKING PER EPD														
3	95	30	30	50	40	1	20	90	50	20	85	25	65	35
Breed %		70GV 30AN			OWNER:		Mulroy Farms LLC							

**Balancer** Homo Black Homo Polled **252**  
**JEB BCC Black Balance 79K**

CCRO CAROLINA LEVERAGE 3214A  
 ERTL BARGAINING CHIP D677  
 KCS BLACKBIRD 7707

TMGC SB ARNOLD 225W  
 JEB BCC MISS ARNOLD 69C  
 JEB BCC MISS BALANCE 41A

**RFI**

REG #:	1561830
BD:	10/22/2022
BW:	74
WW:	653

CE	BW	WW	YW	MK	TM	CEM	ST	DOC	CW	REA	MB	\$C	FPI	EPI
13	0.3	78	118	29	68	7	17	12	41	.55	.82	121.01	96.69	160.28
BREED PERCENTILE RANKING PER EPD														
50	65	25	35	10	10	45	20	50	35	45	1	20	3	15
Breed %		47GV 53AN			OWNER:		Burbank Cattle Company							

**Balancer** Homo Black Homo Polled **250**  
**TMMW Mr Allied 175K**

SCHIEFELBEIN ALLIED 514  
 DMP F185  
 DMP D142

TMMW HOLE IN ONE 93D  
 TMMW MISS BANKER 85G  
 TMMW MISS BISMARCK 100A

**RFI**

REG #:	1559764
BD:	10/4/2022
BW:	74
WW:	778

CE	BW	WW	YW	MK	TM	CEM	ST	DOC	CW	REA	MB	\$C	FPI	EPI
13	0.0	82	123	26	67	9	17	12	46	.21	.34	119.33	85.41	117.83
BREED PERCENTILE RANKING PER EPD														
50	60	15	25	25	15	20	50	20	95	55	25	30	50	
Breed %		57GV 43AN			OWNER:		Mulroy Farms LLC							

**73% Gelbvieh** Homo Black Polled **253**  
**NGCC NG Ditka K37**

JKGF DITKA C85  
 JOSH MR DITKA 624E  
 JOSH MISS LOUANNE 624C

JOSH REVANENT 45C  
 NGCC NG ECTESSA E372  
 RHFH MS ECTESSA R/H 9371X

**RFI**

REG #:	1551693
BD:	9/16/2022
BW:	72
WW:	584

CE	BW	WW	YW	MK	TM	CEM	ST	DOC	CW	REA	MB	\$C	FPI	EPI
15	1.0	78	119	31	70	9	21	8	38	.55	.18		80.66	
BREED PERCENTILE RANKING PER EPD														
20	80	20	25	2	4	15	2	>95	35	55	75		45	
Breed %		73GV 24AN 3XX			OWNER:		Narrow Gate Cattle							

**77% Gelbvieh** Homo Black Homo Polled **254**

**WNBE 249K**

KCF BENNETT U271  
DLW ALUMNI 7513A ET  
DLW MS MATRON 802U

TMMW HOLE IN ONE 93D  
WNBE 949G  
WNBE 849U

REG #:	1562015
BD:	9/2/2022
BW:	84
WW:	677

CE	BW	WW	YW	MK	TM	CEM	ST	DOC	CW	REA	MB	\$C	FPI	EPI
12	-0.3	77	120	25	64	7	20	10	28	.28	.25	135.57	82.40	152.31
BREED PERCENTILE RANKING PER EPD														
60	50	25	25	30	20	40	3	85	70	95	60	10	35	10
Breed %			77GV 23AN			OWNER:			Wannabe Stock Farm					

**78% Gelbvieh** Homo Black Homo Polled **257**

**HRZN K349**

CCRO CAROLINA LEVERAGE 3214A  
DCH HILLE STOCK OPTIONS D410  
DCH HILLE B189 ET

GMF FORTUNE 616D  
HRZN G328  
HRZN A3881

**RFI**

REG #:	1574720
BD:	9/25/2022
BW:	81
WW:	606

CE	BW	WW	YW	MK	TM	CEM	ST	DOC	CW	REA	MB	\$C	FPI	EPI
13	1.4	86	137	28	70	7	19	14	54	1.01	.43	141.08	91.08	152.87
BREED PERCENTILE RANKING PER EPD														
45	85	5	5	10	4	40	10	10	5	2	25	5	10	10
Breed %			78GV 22AN			OWNER:			Horizon Farms					

**78% Gelbvieh** Homo Black Homo Polled **255**

**WNBE 247K**

DCH HILLE D453  
GLM HASHTAG# H11  
GLM W55

WNBE 447B  
WNBE 097H  
WNBE 497B

REG #:	1561999
BD:	9/2/2022
BW:	78
WW:	682

CE	BW	WW	YW	MK	TM	CEM	ST	DOC	CW	REA	MB	\$C	FPI	EPI
15	0.0	81	133	27	67	8	20	12	38	.61	.20	134.72	83.97	122.33
BREED PERCENTILE RANKING PER EPD														
20	55	15	10	15	10	25	3	50	35	40	75	10	30	30
Breed %			78GV 22AN			OWNER:			Wannabe Stock Farm					

**80% Gelbvieh** Homo Black Homo Polled **258**

**DRGF 240K**

GMF FORTUNE 616D  
HRZN H182  
HRZN E103

DMP D610  
JEB BCC DR MS BALANCE 204F  
JEB BCC MISS POGO 44W

REG #:	1571973
BD:	9/11/2022
BW:	74
WW:	712

CE	BW	WW	YW	MK	TM	CEM	ST	DOC	CW	REA	MB	\$C	FPI	EPI
11	0.3	78	119	22	61	6	16	11	46	.86	.32	110.50	83.36	80.75
BREED PERCENTILE RANKING PER EPD														
75	65	20	25	60	35	60	30	70	15	10	45	50	30	75
Breed %			80GV 20AN			OWNER:			Duck River Gelbvieh					

**78% Gelbvieh** Homo Black Homo Polled **256**

**RUR Stock Exchange 911 79K**

CCRO CAROLINA LEVERAGE 3214A  
DCH HILLE STOCK OPTIONS D410  
DCH HILLE B189 ET

TMMW GOVENORS MR EXTRA 6018W  
TMMW MISS GOVENOR 79Z  
TMMW MISS CIM LYNDIA 8563U

**RFI**

REG #:	1562080
BD:	9/11/2022
BW:	77
WW:	465

CE	BW	WW	YW	MK	TM	CEM	ST	DOC	CW	REA	MB	\$C	FPI	EPI
13	-0.2	73	110	21	58	8	20	10	9	.48	.37	145.58	81.93	104.39
BREED PERCENTILE RANKING PER EPD														
45	50	40	45	70	55	25	3	85	>95	65	35	4	40	50
Breed %			78GV 22AN			OWNER:			Rockin'-U-Ranch					

**81% Gelbvieh** Homo Black Polled **259**

**HRZN K367**

VRT LAZY TV SAM U451  
SKF DUNNS ESCANDER 023E  
SKF DUNNS MS CATHERINE 5C45

BWF BRANDYWINE ZACK 201Z  
HRZN D381  
HRZN A3881

**RFI**

REG #:	1574701
BD:	9/29/2022
BW:	72
WW:	520

CE	BW	WW	YW	MK	TM	CEM	ST	DOC	CW	REA	MB	\$C	FPI	EPI
17	-1.1	69	109	26	60	8	18	16	13	.25	.63	129.76	88.63	122.46
BREED PERCENTILE RANKING PER EPD														
10	30	60	50	20	40	25	15	2	>95	95	5	15	15	30
Breed %			81GV 19AN			OWNER:			Horizon Farms					





## About Gelbvieh Bulls

Each of the Gelbvieh bulls is listed separately in the catalog with their own individual performance and pedigree information. They are all registered with the American Gelbvieh Association. The EPD's are the most current provided by the Gelbvieh Assoc.

The Average EPD's for Gelbvieh bulls as of 1/16/24:  
 CE:13 BW: 0.1 WW: 70 YW: 103 MK: 23 TM: 58  
 CEM: 6 ST: 16 DOC: 12 CW: 28 REA: 0.67  
 MB: 0.20 \$C: 114.70 FPI: 75.96 EPI: 83.32

## PB Gelbvieh ND Red Homo Polled DRGF 247K

ASCH JNCC RESOLUTE DIRECTIVE  
 JNCC RED DIRECTIVE 367A  
 JNCC RIKKI FORTUNE 09X

CJSD 1860B  
 NNR 33 RED ROCK  
 NNR POST BLACK FACE

REG #:	1571979
BD:	9/13/2022
BW:	76
WW:	769

CE	BW	WW	YW	MK	TM	CEM	ST	DOC	CW	REA	MB	\$C	FPI	EPI
12	2.4	93	137	18	64	5	18	8	42	.80	.17	124.09	85.07	117.48
BREED PERCENTILE RANKING PER EPD														
55	95	1	1	90	15	70	20	>95	10	25	55	35	10	15
Breed %		83GV 17AN			OWNER:			Duck River Gelbvieh						

## PB Gelbvieh Homo Black Homo Polled GMF 239K

CCRO CAROLINA LEVERAGE 3214A  
 WAHL 4H ET  
 FHG FLYING H MS LEGACY 48Y  
 JKGF FINAL FRONTIER C95  
 GMF MENG 97G  
 GMF MENG 26Z

REG #:	1553270
BD:	7/30/2022
BW:	79
WW:	655

CE	BW	WW	YW	MK	TM	CEM	ST	DOC	CW	REA	MB	\$C	FPI	EPI
10	-0.2	81	127	31	71	7	21	11	25	.66	.66	149.84	95.04	103.80
BREED PERCENTILE RANKING PER EPD														
80	45	10	5	2	2	30	2	65	65	50	1	4	1	25
Breed %		94GV 6AN			OWNER:			Meng Farms Cattle Company						

## PB Gelbvieh Homo Black Polled KZC K100

SPFR 204Z  
 KZC E71  
 ABF 2207Z  
 VRT LAZY TV SAM U451  
 SLMG 94Z  
 RHRT ROXIE CAROLENIA

REG #:	1576947
BD:	9/14/2022
BW:	80
WW:	589

CE	BW	WW	YW	MK	TM	CEM	ST	DOC	CW	REA	MB	\$C	FPI	EPI
15	0.1	77	115	28	67	8	15	14	37	.84	.10			79.34
BREED PERCENTILE RANKING PER EPD														
20	50	20	20	10	10	15	60	10	20	20	80			30
Breed %		94GV 6AN			OWNER:			KZ Cattle Company						

## PB Gelbvieh Homo Black Homo Polled RUR Options Unlimited 99K

CCRO CAROLINA LEVERAGE 3214A  
 DCH HILLE STOCK OPTIONS D410  
 DCH HILLE B189 ET  
 JBOB CAROLINA FORTUNE 2564J ET  
 RUR MAXINE'S FORTUNE  
 RUR BJ'S MAXINE

REG #:	1562091
BD:	9/11/2022
BW:	73
WW:	580

CE	BW	WW	YW	MK	TM	CEM	ST	DOC	CW	REA	MB	\$C	FPI	EPI
13	-1.2	72	104	28	64	7	21	13	25	.95	.31	151.80	82.76	91.76
BREED PERCENTILE RANKING PER EPD														
40	20	40	45	10	15	30	2	25	65	10	20	4	15	40
Breed %		99.9GV			OWNER:			Rockin'-U-Ranch						

## PB Gelbvieh Homo Black Homo Polled RUR Cash Back 803K

CCRO CAROLINA LEVERAGE 3214A  
 DCH HILLE STOCK OPTIONS D410  
 DCH HILLE B189 ET  
 TMMW DESTINATION 82Y  
 DRGF 803F  
 ABF 0063X

REG #:	1562081
BD:	9/12/2022
BW:	77
WW:	495

CE	BW	WW	YW	MK	TM	CEM	ST	DOC	CW	REA	MB	\$C	FPI	EPI
14	-1.6	72	113	20	57	8	18	12	33	.94	.19	139.04	79.34	118.12
BREED PERCENTILE RANKING PER EPD														
30	15	40	25	75	55	15	20	45	30	10	50	15	30	15
Breed %		88GV 12AN			OWNER:			Rockin'-U-Ranch						

## Keep Your Mind in the Market

Volatile commodity markets and the speed at which narrow windows of opportunity to manage risk open and close underscore the value of keeping your mind engaged in the market, no matter how frequently you trade cattle.

That's why Seedstock Plus continues to offer as a free service to its customers and members a complimentary subscription to the daily Cattle Current electronic newsletter. It offers a convenient snapshot of the previous day's cash and futures markets for calves, feeders, fed cattle and related commodities. You'll also find pertinent market-related news.

If you're not receiving Cattle Current, or if you'd like to receive it at more than one e-mail address, please let us know and we'll add you to the list. You can send your request to [wes@cattlecurrent.com](mailto:wes@cattlecurrent.com).

# GELBVIEW BULLS

## PB Gelbvieh Homo Black Homo Polled **265**

### GATS Gatson Sam Kobe 218K

TMMW HOLE IN ONE 93D  
SKF DUNNS HOLE IN ONE SAM 026G  
SKF DUNNS MISS SAM 719E

JBOB CAROLINA FORTUNE 2564J ET  
PROB MISS FORTUNE 244C  
PROB MISS IMPACT 149X

REG #:	1548986
BD:	9/18/2022
BW:	75
WW:	608

CE	BW	WW	YW	MK	TM	CEM	ST	DOC	CW	REA	MB	\$C	FPI	EPI
16	-0.1	70	98	31	66	7	18	10	17	.70	.10	131.18	75.66	99.12
BREED PERCENTILE RANKING PER EPD														
10	45	50	65	2	10	30	20	85	90	45	80	20	55	30
Breed %		99.9GV			OWNER:		Gatson Gelbvieh							

## PB Gelbvieh Homo Black Homo Polled **266**

### TMMW Mr Stock Options 147K

CCRO CAROLINA LEVERAGE 3214A  
DCH HILLE STOCK OPTIONS D410  
DCH HILLE B189 ET

JKGF Y108  
TMMW MISS GRANITE 18A  
DLF Y99

REG #:	1559734
BD:	9/25/2022
BW:	77
WW:	800

CE	BW	WW	YW	MK	TM	CEM	ST	DOC	CW	REA	MB	\$C	FPI	EPI
14	0.7	83	111	25	66	8	20	16	33	.79	.29	143.27	85.14	81.32
BREED PERCENTILE RANKING PER EPD														
30	65	10	30	30	10	15	4	2	30	25	25	10	10	55
Breed %		99.9GV			OWNER:		Mulroy Farms LLC							

## PB Gelbvieh Homo Black Homo Polled **267**

### TMMW Mr Stock Options 180K

CCRO CAROLINA LEVERAGE 3214A  
DCH HILLE STOCK OPTIONS D410  
DCH HILLE B189 ET

KHR 79B  
TMMW MISS MONTANA 286D  
TMMW MISS GRANITE 150Z

REG #:	1559769
BD:	10/6/2022
BW:	79
WW:	810

CE	BW	WW	YW	MK	TM	CEM	ST	DOC	CW	REA	MB	\$C	FPI	EPI
15	2.3	98	142	28	76	10	18	15	50	1.15	.15	138.26	90.07	144.38
BREED PERCENTILE RANKING PER EPD														
20	95	1	1	10	1	3	20	4	2	1	65	15	2	3
Breed %		99.9GV			OWNER:		Mulroy Farms LLC							



## Additional Bulls Selling:

This will be the fourth year of having the Brangus offering from Southern Arkansas University. These bulls come from the University Beef Farm's registered Brangus herd. They have been developed at the University farm with the involvement of students in a teaching environment.

Seedstock Plus is pleased to help the University market these registered Brangus bulls. There will be videos available on these bulls. They were semen checked and trich tested as well. They sell under the same terms and conditions as the Seedstock Plus bulls.

## About Brangus Bulls

Registered Brangus bulls are 3/8 Brahman/Zebu and 5/8 Angus. The Foundation parents from both breeds must be registered and recorded with IBBA. The Brangus bull is a popular choice with commercial producers - especially those in an adverse environment as the Brahman influence excels in disease and pest resistance as well as heat tolerance.

The average EPD's for Brangus bulls as of 1/26/2024 are:  
CE: 4.90 BW: 0.55 WW: 22 YW: 43 Milk: 9 TM: 19  
CEM: 3.6 ST: 1.4 REA: 0.20 IMF: 0.07 Fat: 0.005 Term: 1.93 Fert: 3.34

Additional EPD Definitions (the rest are on page 3 About the Catalog):  
IMF: Intra-muscular fat - expressed as a fraction of the difference in marbling score compared to other sires.  
Fat: expressed in inches and is a predictor of differences in external fat  
Terminal Index: a blended EPD combining traits for positive carcass value.  
Fertility Index: a blended EPD combining traits for maternal characteristics including WW, Milk, Stayability, HF Preg & Mature Cow Weight.

## Brangus **268**

### SAU 205K

BWCC BIG TOWN 192B16  
MC BIG CITY 541G40  
MC MS RESOURCE 541A4

001C TRINITY  
SAU 711L  
SAU 937B

REG #:	10493931
BD:	2/3/2022
BW:	80
WW:	634

CE	BW	WW	YW	MK	TM	CEM	ST	REA	IMF	FAT	TERM	FERT
5.2	0.0	33	47	15	32	2.4	2	0.28	0.16	0.003	2.62	4.53
BREED PERCENTILE RANKING PER EPD												
50	40	20	45	10	5	90	35	40	35	50	30	20
Breed %		100BN			OWNER:		Southern Arkansas University					

## Brangus **269**

### SAU 208K

BWCC BIG TOWN 192B16  
MC BIG CITY 541G40  
MC MS RESOURCE 541A4

001C TRINITY  
SAU 318G  
SAU 937B

REG #:	10493934
BD:	2/4/2022
BW:	73
WW:	538

CE	BW	WW	YW	MK	TM	CEM	ST	REA	IMF	FAT	TERM	FERT
5.9	-0.5	30	47	12	28	2.5	2	0.28	0.16	0.003	2.61	4.45
BREED PERCENTILE RANKING PER EPD												
40	30	30	45	20	15	90	30	40	35	50	35	20
Breed %		100BN			OWNER:		Southern Arkansas University					

# BRANGUS BULLS

## UltraBlack 2

SAU 209K

S A V RESOURCE 1441  
DMR CASH FLOW 535F30  
MS DMR CORONADO 5535A8

DMR EMPIRE 795D12  
SAU 015H  
SAU 608K

270

REG #:	10493935
BD:	2/4/2022
BW:	72
WW:	547

CE	BW	WW	YW	MK	TM	CEM	ST	REA	IMF	FAT	TERM	FERT
4.7	0.3	35	66	6	24	2.0	2.4	0.45	0.12	0.014	3.29	4.44
BREED PERCENTILE RANKING PER EPD												
60	50	20	15	75	30	95	20	20	40	75	20	20
Breed %	25 AN 75BN		OWNER:		Southern Arkansas University							

## UltraBlack 2

SAU 217K

A V RESOURCE 1441  
DMR CASH FLOW 535F30  
MS DMR CORONADO 5535A8

SUHN'S MAJESTIK BEACON 30C  
SAU 022H  
SAU 406H

274

REG #:	10493943
BD:	2/8/2022
BW:	85
WW:	606

CE	BW	WW	YW	MK	TM	CEM	ST	REA	IMF	FAT	TERM	FERT
0.6	2.2	48	86	6	30	0.7	2.2	0.48	0.13	0.015	4.03	4.03
BREED PERCENTILE RANKING PER EPD												
95	95	3	2	75	10	>95	25	15	40	80	10	30
Breed %	25AN 75BN		OWNER:		Southern Arkansas University							

## Brangus

SAU 212K

BWCC BIG TOWN 192B16  
MC BIG CITY 541G40  
MC MS RESOURCE 541A4

001C TRINITY  
SAU 301G  
SAU 822A

271

REG #:	10493938
BD:	2/6/2022
BW:	85
WW:	566

CE	BW	WW	YW	MK	TM	CEM	ST	REA	IMF	FAT	TERM	FERT
2.3	0.9	30	55	13	29	2.1	1.9	0.24	0.16	0.001	2.82	4.42
BREED PERCENTILE RANKING PER EPD												
85	65	30	30	15	10	95	35	45	35	40	25	20
Breed %	100BN		OWNER:		Southern Arkansas University							

## Brangus

SAU 218K

BWCC BIG TOWN 192B16  
MC BIG CITY 541G40  
MC MS RESOURCE 541A4

001C TRINITY  
SAU 314G  
SAU 006C

275

REG #:	10493944
BD:	2/9/2022
BW:	80
WW:	581

CE	BW	WW	YW	MK	TM	CEM	ST	REA	IMF	FAT	TERM	FERT
4.2	0.3	29	47	15	30	2.4	2.1	0.28	0.16	0.003	2.56	4.61
BREED PERCENTILE RANKING PER EPD												
65	50	30	45	10	10	90	30	40	35	50	35	15
Breed %	100BN		OWNER:		Southern Arkansas University							

## Brangus

SAU 213K

BWCC BIG TOWN 192B16  
MC BIG CITY 541G40  
MC MS RESOURCE 541A4

001C TRINITY  
SAU 330G  
SAU 901B

272

REG #:	10493939
BD:	2/6/2022
BW:	85
WW:	587

CE	BW	WW	YW	MK	TM	CEM	ST	REA	IMF	FAT	TERM	FERT
2.6	1.0	26	32	13	26	2.5	2.2	0.24	0.20	0.004	1.86	4.65
BREED PERCENTILE RANKING PER EPD												
85	70	40	75	15	20	85	30	45	25	50	55	15
Breed %	100BN		OWNER:		Southern Arkansas University							

## Brangus

SAU 219K

BWCC BIG TOWN 192B16  
MC BIG CITY 541G40  
MC MS RESOURCE 541A4

DMR ELDORADO 30B15  
SAU 905G  
SAU 423H

276

REG #:	10493945
BD:	2/9/2022
BW:	78
WW:	617

CE	BW	WW	YW	MK	TM	CEM	ST	REA	IMF	FAT	TERM	FERT
5.6	-0.1	33	47	8	25	2.5	2.4	0.24	0.21	0.002	2.66	4.82
BREED PERCENTILE RANKING PER EPD												
45	35	20	45	55	25	85	20	45	25	45	30	10
Breed %	100BN		OWNER:		Southern Arkansas University							

## UltraBlack 2

SAU 215K

S A V RESOURCE 1441  
DMR CASH FLOW 535F30  
MS DMR CORONADO 5535A8

JBM GRIESE 65B2  
SAU 030H  
SAU 408H

273

REG #:	10493941
BD:	2/7/2022
BW:	80
WW:	684

CE	BW	WW	YW	MK	TM	CEM	ST	REA	IMF	FAT	TERM	FERT
3.2	0.9	46	70	10	33	1.0	1.3	0.45	0.16	0.013	3.56	3.28
BREED PERCENTILE RANKING PER EPD												
80	65	4	10	35	4	>95	60	20	35	75	15	60
Breed %	25AN 75BN		OWNER:		Southern Arkansas University							



# BRANGUS BULLS

## Brangus

SAU 229K

BWCC BIG TOWN 192B16  
MC BIG CITY 541G40  
MC MS RESOURCE 541A4

DMR ELDORADO 30B15  
SAU 911G  
SAU 937B

277

REG #:	10493953
BD:	2/17/2022
BW:	75
WW:	603

CE	BW	WW	YW	MK	TM	CEM	ST	REA	IMF	FAT	TERM	FERT
6.2	-0.3	35	55	8	26	2.7	2.2	0.29	0.20	0.002	3.04	4.43
BREED PERCENTILE RANKING PER EPD												
35	30	20	30	55	20	85	30	40	25	45	25	20
Breed %	100BN		OWNER:				Southern Arkansas University					

## Brangus

SAU 238K

TJM MAIN EVENT 59C10  
SAU 805M  
SAU 008C

DMR THE CHAIRMAN 415A11  
SAU 803M  
SAU 905B

281

REG #:	10493961
BD:	2/26/2022
BW:	72
WW:	536

CE	BW	WW	YW	MK	TM	CEM	ST	REA	IMF	FAT	TERM	FERT
8.1	-1.4	16	31	9	17	3.4	1.4	0.19	0.01	0.000	1.54	3.69
BREED PERCENTILE RANKING PER EPD												
15	15	70	75	45	65	60	55	55	70	40	65	45
Breed %	100BN		OWNER:				Southern Arkansas University					

## Brangus

SAU 230K

DMR THE CHAIRMAN 415A11  
SAU 724L  
SAU 510J

001C TRINITY  
SAU 304G  
SAU 002C

278

REG #:	10493954
BD:	2/18/2022
BW:	70
WW:	557

CE	BW	WW	YW	MK	TM	CEM	ST	REA	IMF	FAT	TERM	FERT
7.4	-0.7	7	22	16	20	3.6	0.8	0.10	0.01	0.000	1.07	3.27
BREED PERCENTILE RANKING PER EPD												
20	25	95	5	50	80	70	40	85	60			
Breed %	100BN		OWNER:				Southern Arkansas University					

## Brangus

SAU 248K

TJM MAIN EVENT 59C10  
SAU 805M  
SAU 008C

001C TRINITY  
SAU 701L  
SAU 905B

282

REG #:	10493969
BD:	3/18/2022
BW:	71
WW:	485

CE	BW	WW	YW	MK	TM	CEM	ST	REA	IMF	FAT	TERM	FERT
8.3	-2.0	6	21	10	14	3.8	1.2	0.13	0.01	0.001	1.11	3.60
BREED PERCENTILE RANKING PER EPD												
15	10	95	95	35	80	45	65	65	70	40	80	50
Breed %	100BN		OWNER:				Southern Arkansas University					

## Brangus

SAU 234K

SUHN'S MAJESTIK BEACON 30C  
SAU 008H  
SAU 604K

DMR EMPIRE 795D12  
SAU 005H  
SAU 213G

279

REG #:	10493957
BD:	2/26/2022
BW:	70
WW:	615

CE	BW	WW	YW	MK	TM	CEM	ST	REA	IMF	FAT	TERM	FERT
7.8	-0.4	26	51	6	20	4.2	1.8	0.18	-0.08	0.003	2.02	3.50
BREED PERCENTILE RANKING PER EPD												
15	30	40	35	75	50	30	40	60	95	50	50	50
Breed %	100BN		OWNER:				Southern Arkansas University					

## Brangus

SAU 250K

DMR THE CHAIRMAN 415A11  
SAU 724L  
SAU 510J

DMR THE CHAIRMAN 415A11  
SAU 729L  
SAU 312G

283

REG #:	10493970
BD:	3/28/2022
BW:	74
WW:	444

CE	BW	WW	YW	MK	TM	CEM	ST	REA	IMF	FAT	TERM	FERT
6.9	-0.7	-1	7	12	12	2.9	0.8	0.12	0.03	-0.001	0.44	3.15
BREED PERCENTILE RANKING PER EPD												
25	25	>95	>95	20	90	75	80	70	60	35	>95	65
Breed %	100BN		OWNER:				Southern Arkansas University					

## Brangus

SAU 235K

DMR THE CHAIRMAN 415A11  
SAU 724L  
SAU 510J

JBM GRIESE 65B2  
SUA 831M  
SAU 314G

280

REG #:	10493958
BD:	2/26/2022
BW:	74
WW:	543

CE	BW	WW	YW	MK	TM	CEM	ST	REA	IMF	FAT	TERM	FERT
7.3	-0.9	11	21	15	21	3.2	0.77	0.16	0.01	0.000	1.11	3.16
BREED PERCENTILE RANKING PER EPD												
20	20	85	95	10	45	65	80	60	70	40	80	65
Breed %	100BN		OWNER:				Southern Arkansas University					



# FOUR STATES CLASSIC

*Spring Turnout  
Replacement Female Sale*



## SATURDAY, APRIL 20, 2024

*Hope Livestock Facility, Hope, AR*

*Sale starts at 1 p.m.*

**LBJCATTLE.COM**

**Four States  
Classic**



*Replacement Female Sale*

*Larry Ford*

870-703-4345

*Bart Emerson*

870-904-6671

*Jeff Milam*

870-703-0716

***Red or Black, Purebred or Balancer -  
we have what you need!***

***'Zade'***



***'Saguaro'***



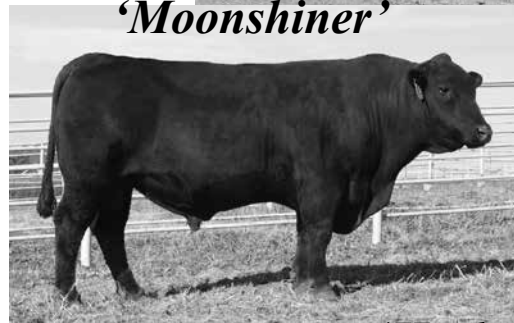
***'Stock Options'***



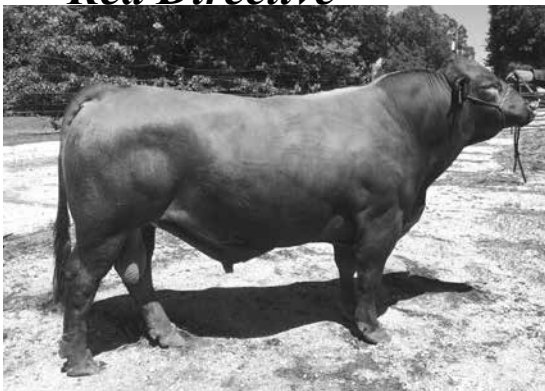
***'Redneck'***



***'Moonshiner'***



***'Red Directive'***



***'Hashtag#'***



***www.seedstockplusgenetics.com***

***CHECK OUT THE  
UPDATED WEBSITE !***



Contact: Seedstock Plus: 877-486-1160  
or email: john@seedstockplus.com

## Terms & Conditions

**Terms:** Terms of the sale are cash or personal check unless satisfactory credit arrangements have been made with the seller previous to the sale.

**Bidding:** All animals sell to the highest bidder. Any disputes or challenges regarding bids shall be settled by the auctioneer and his decision shall be final. Mailed or telephoned bids will be handled with the strictest confidence.

**Registrations & Transfers:** Each animal which is offered and sold has a certificate of registry available at the time of sale. The seller is responsible for the proper transfer of the certificate to the purchaser including full payment of transfer fees.

**Purchaser's Risk:** Each animal becomes the property of and therefore is also the risk of the purchaser as soon as it is sold.

**Announcements:** Any errors or changes in information contained in the catalog will be announced from the auction block. Such announcements shall take precedence over information contained herein.

**Rights and Obligations:** The above terms and conditions of sale constitute a contract between the buyer and seller of each animal and shall be equally binding to both. Animals resold following purchase in this sale shall constitute a separate transaction and the rights and obligations of the parties connected thereto are not covered by the above terms and conditions of this sale. Neither the host farm, auctioneers, nor any other person connected with the management or conduct of this sale assumes any liability, legal or otherwise, except as set forth above.

### DEFINITIONS AND GUARANTEES

**HORNED:** An animal with a horn growth affixed to the skull that has or has not been removed.

**POLLED/SCURRED:** An animal with rudimentary horn growth that will not develop into a horn. The rudimentary horn growth may or may not become affixed to the skull at an older age.

**POLLED:** An animal with absence of horn growth (An animal can have scurs and still be genetically polled)

**DOUBLE POLLED:** An animal whose sire and dam are both polled or scurred, this gives this animal the possibility of being homozygous polled for the polled trait but it is not yet proven so.

**HOMOZYGOUS POLLED:** An animal who carries two polled genes, and will produce polled or polled/scurred offspring with every mating.

**DILUTER GENE:** A gene carried by some Gelbvieh cattle that affects the degree of red color in the hair coat. Bulls carrying this gene can produce gray calves when mated to black cows or cream colored calves when mated to each other.

**DILUTER FREE:** All Red Angus are free of the diluter gene as are all red Gelbvieh cattle resulting from a double black mating. Red Gelbviehs can also be proven diluter-free by mating to black cows and producing all red or black offspring

**DOUBLE BLACK:** An animal whose sire and dam are both black, which give the animal the possibility of being homozygous for the black trait but its not yet proven so.

**HOMOZYGOUS BLACK:** An animal who carries two black genes and has been proven by mating or genetically tested to produce black or black factor (gray when mated with diluter-based genetics) calves with every mating.

**For more information contact: Seedstock Plus Toll Free at: 877-486-1160 or John on his cell: 660-734-1165 or visit the website: [www.seedstockplus.com](http://www.seedstockplus.com)**

## Seedstock Plus Sale Calendar

### North Missouri Bull Sale

February 24, 2024

125 Balancer & Gelbvieh Bulls - all Black!  
Kingsville Livestock, Kingsville, MO

### Arkansas Bull Sale

March 2, 2024

75 Angus, Brangus, Gelbvieh  
& Balancer Bulls - Red & Black!  
Hope Livestock Auction, Hope, AR

### Red Reward Bull & Heifer Sale

March 9, 2024

50 Red Gelbvieh & Balancer Bulls  
Plus! Red Comm & Registered Females  
Wheeler Livestock, Osceola, MO

### South Missouri Bull & Female Sale

March 23, 2024

125 Balancer & Gelbvieh Bulls - all Black!  
Plus! Black Comm & Registered Open Heifers  
Joplin Regional Stockyards, Carthage, MO

### On-Line Female Sale

Friday May 3, 2024 - soft closes 7 p.m.  
Commercial & Registered Females!  
details at Seedstock Plus & DV Auction  
websites closer to sale date!



Seedstock Plus is proud to once again be listed in the top 100 in bull sales by BEEF Magazine. Ranking # 16 on the list with over 735 bulls sold in the 2022 calendar year! We know bulls and we can certainly help you find one that is right for your program! Contact us if you need help in matching a bull to your needs!

Working Together for Industry Excellence



**Seedstock Plus**

FIRST CLASS MAIL

